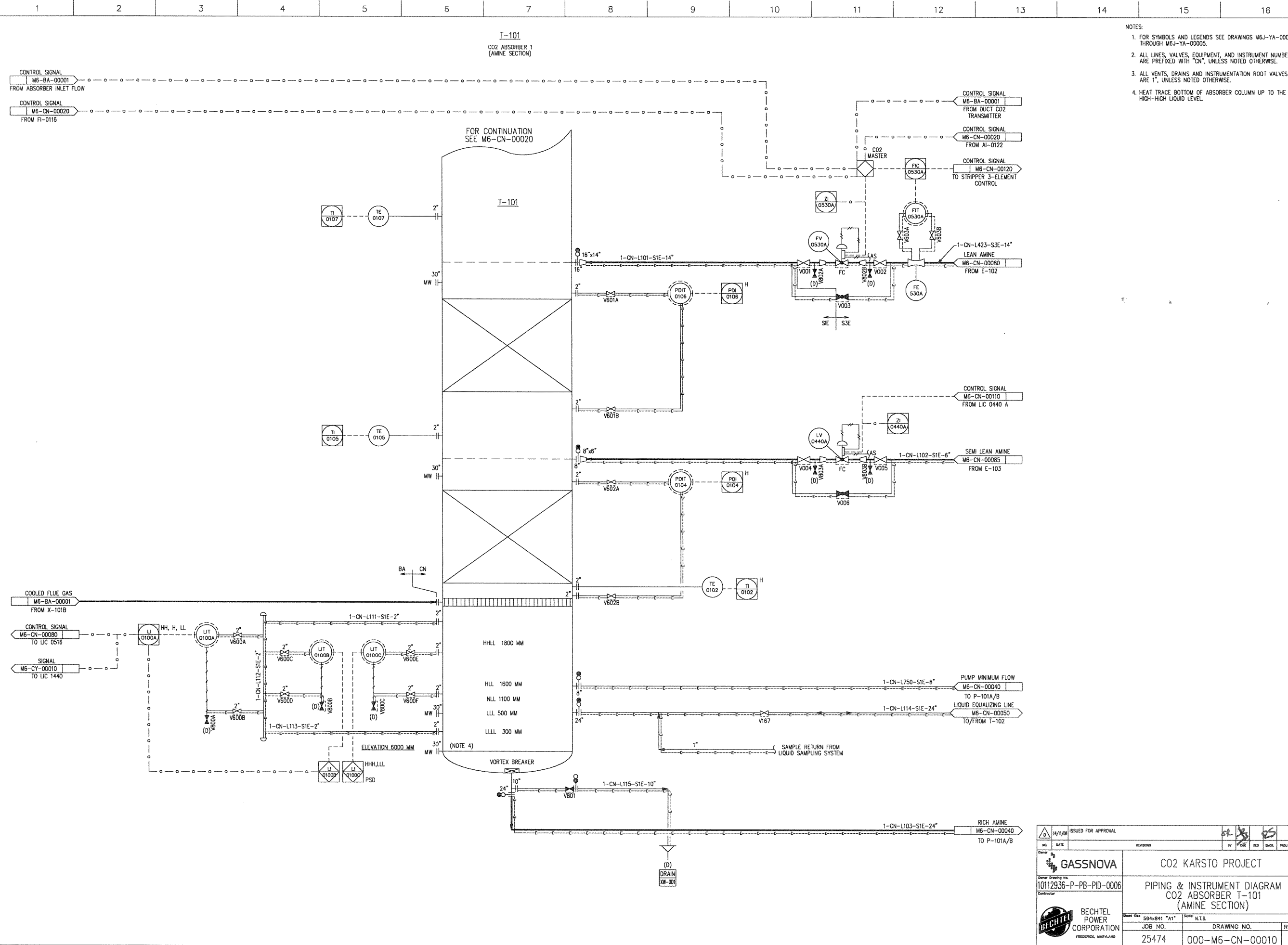


© Bechtel Corporation, 2008. All rights reserved. Bechtel Confidential. Contains information that is confidential and proprietary to Bechtel and may not be used, reproduced or disclosed in any form without Bechtel's prior written permission. This document is prepared exclusively for Gassnova in connection with the preparation of the FEED study for the CO2 Capture Facility at Karsto, Norway, and is not to be relied upon by others or used in connection with any other project.



- NOTES:
1. FOR SYMBOLS AND LEGENDS SEE DRAWINGS M6J-YA-00001 THROUGH M6J-YA-00005.
 2. ALL LINES, VALVES, EQUIPMENT, AND INSTRUMENT NUMBERS ARE PREFIXED WITH "CN", UNLESS NOTED OTHERWISE.
 3. ALL VENTS, DRAINS AND INSTRUMENTATION ROOT VALVES ARE 1", UNLESS NOTED OTHERWISE.
 4. HEAT TRACE BOTTOM OF ABSORBER COLUMN UP TO THE HIGH-HIGH LIQUID LEVEL.

ISSUED FOR APPROVAL		BY: [Signature]		CHK: [Signature]		DES: [Signature]		CON: [Signature]		APP: [Signature]	
GASSNOVA		CO2 KARSTO PROJECT									
10112936-P-PB-PID-0006		PIPING & INSTRUMENT DIAGRAM CO2 ABSORBER T-101 (AMINE SECTION)									
BECHTEL POWER CORPORATION		JOB NO. 25474		DRAWING NO. 000-M6-CN-00010		REV. 0					