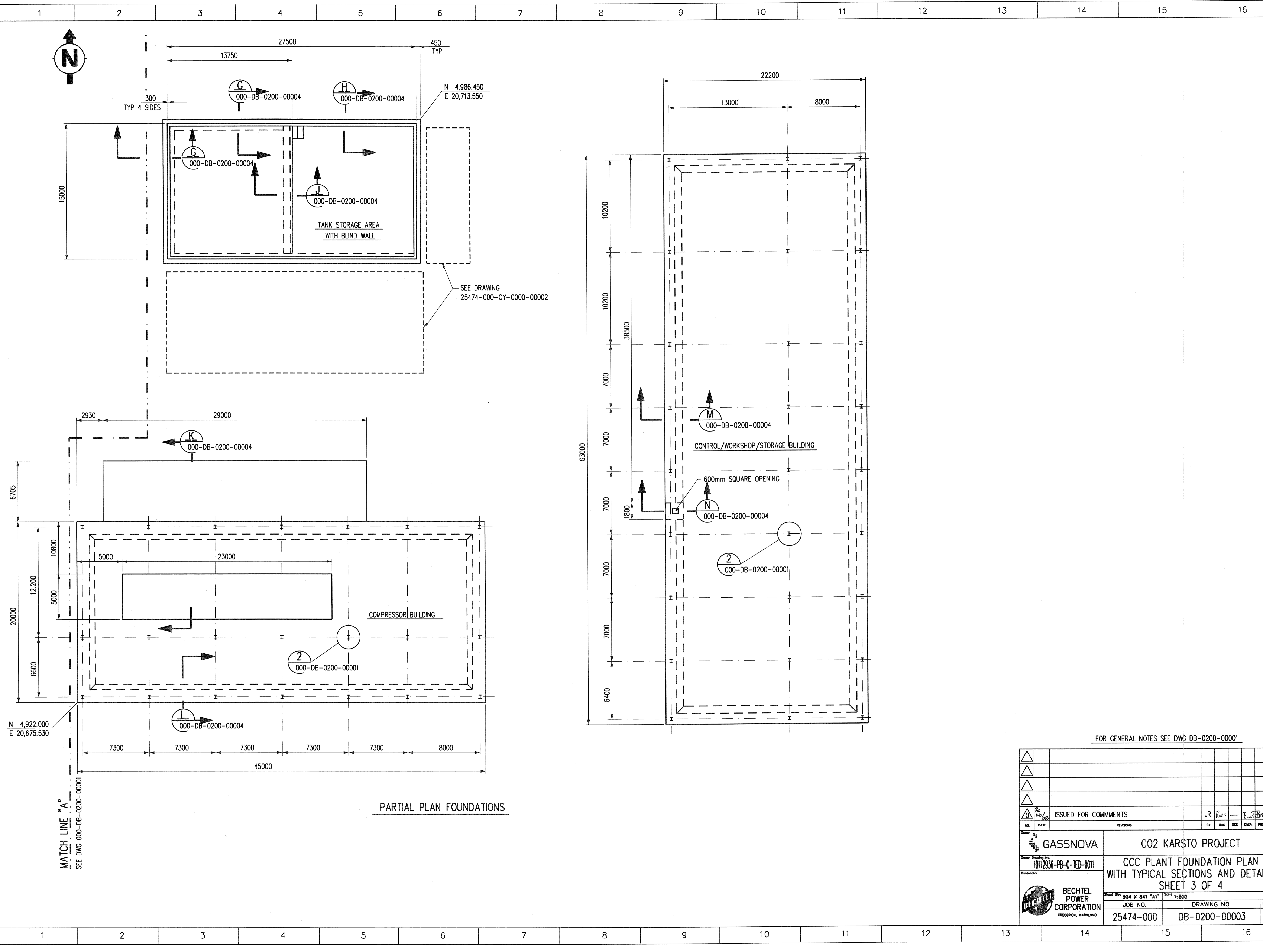


©Bechtel Corporation 2008. All rights reserved. Bechtel Confidential. Contains information that is confidential and proprietary to Bechtel and may not be used, reproduced, or transmitted in any form without the prior written permission of Bechtel. This document is prepared exclusively for Gassnova in connection with the preparation of the FEED study for the CO2 Capture Facility at Karsto, Norway, and is not to be relied upon by others or used in connection with any other project.



**PARTIAL PLAN FOUNDATIONS**

FOR GENERAL NOTES SEE DWG DB-0200-00001

NO.	DATE	REVISIONS	BY	CHK	DES	ENGR	PROJ	APPR
Owner Drawing No. <b>10112936-PB-C-1ED-0011</b>		GASSNOVA <b>CO2 KARSTO PROJECT</b>						
Contractor <b>BECHTEL POWER CORPORATION</b> FREDERICK, MARYLAND		<b>CCC PLANT FOUNDATION PLAN WITH TYPICAL SECTIONS AND DETAILS SHEET 3 OF 4</b>						
Sheet Size: 594 x 841 "A1" Scale: 1:500		JOB NO. <b>25474-000</b>		DRAWING NO. <b>DB-0200-00003</b>		REV. <b>0</b>		