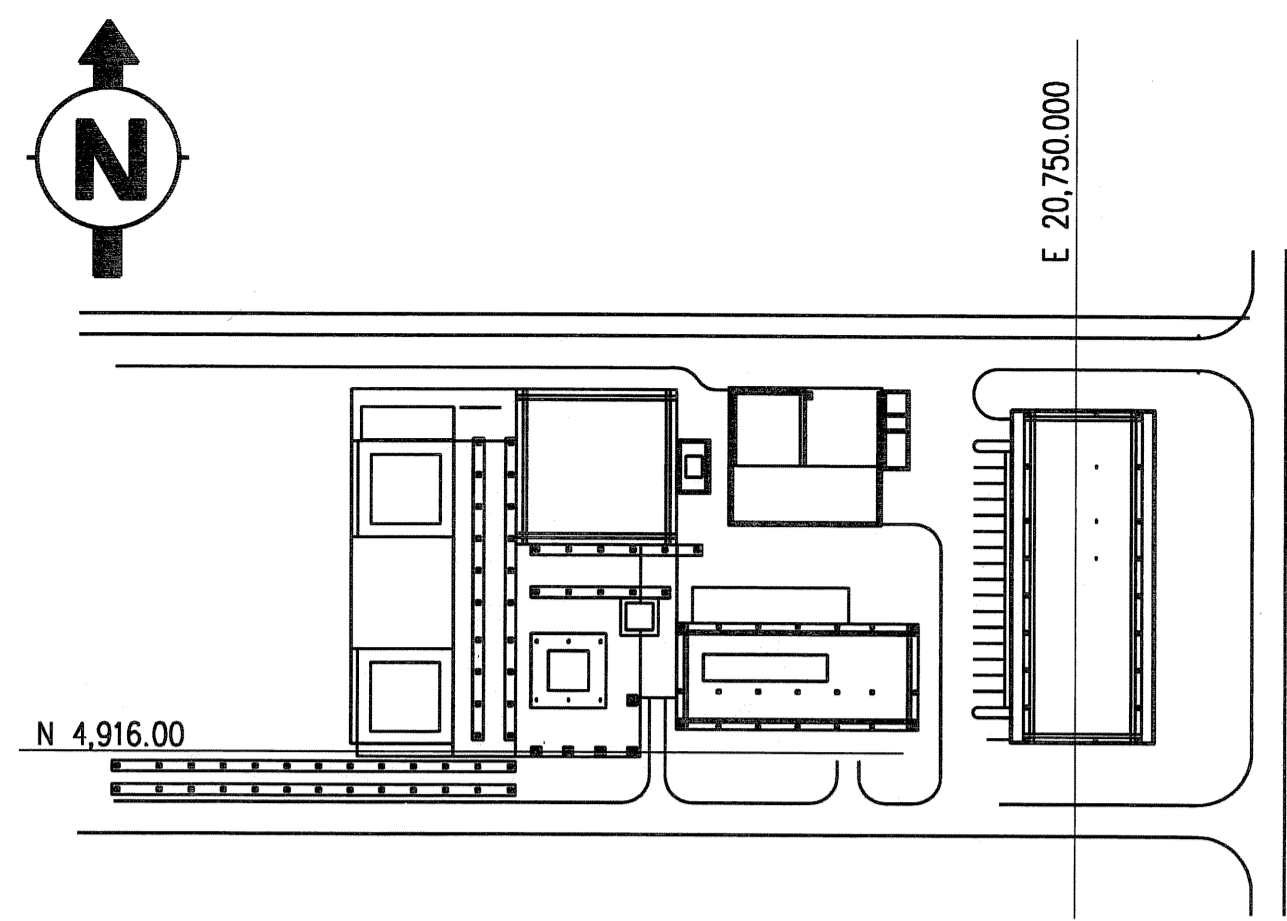
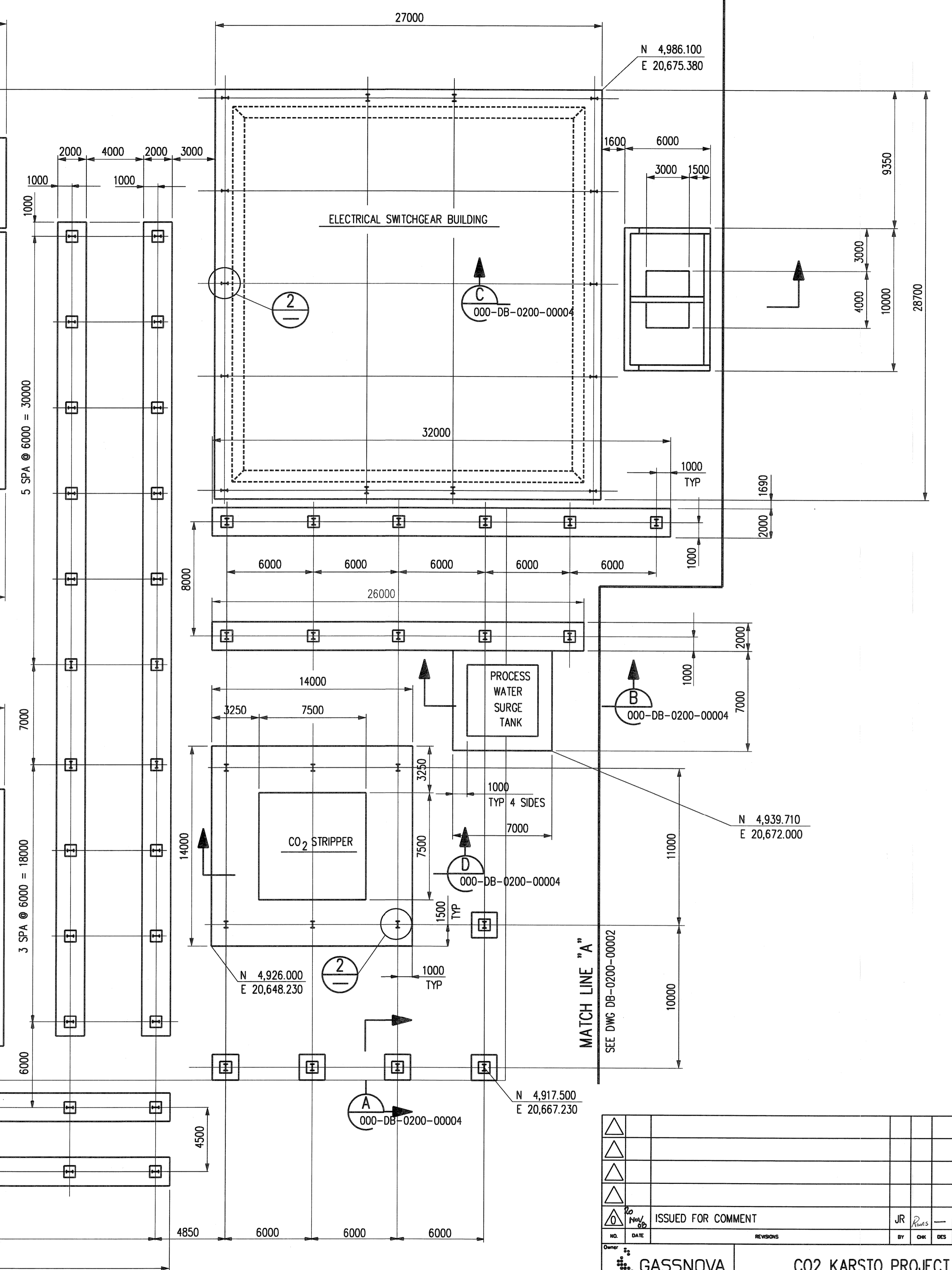
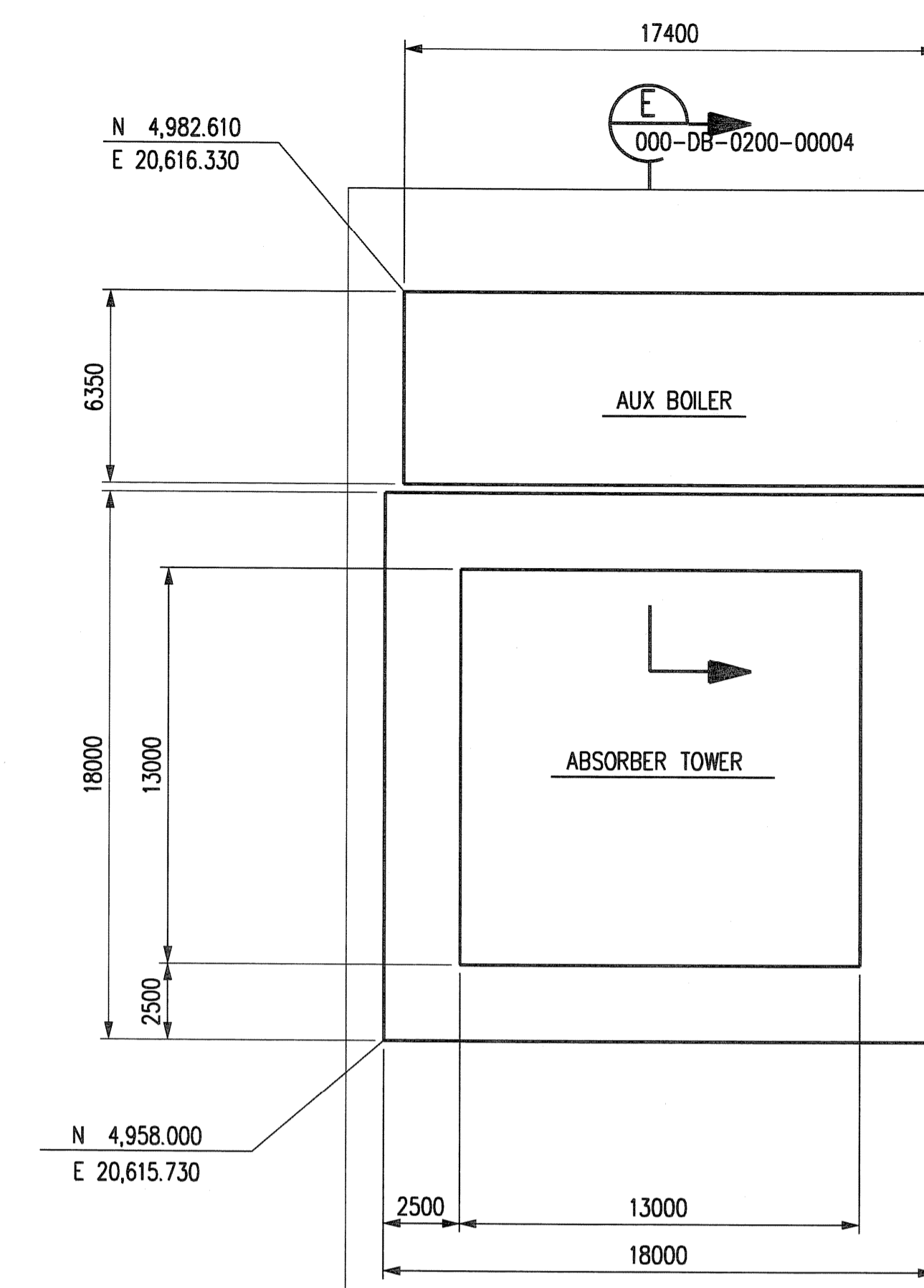
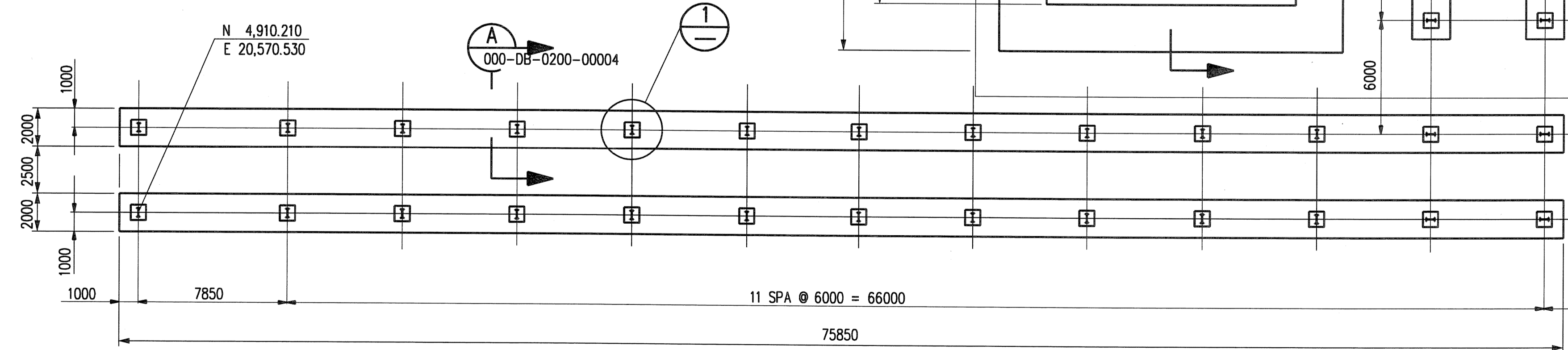
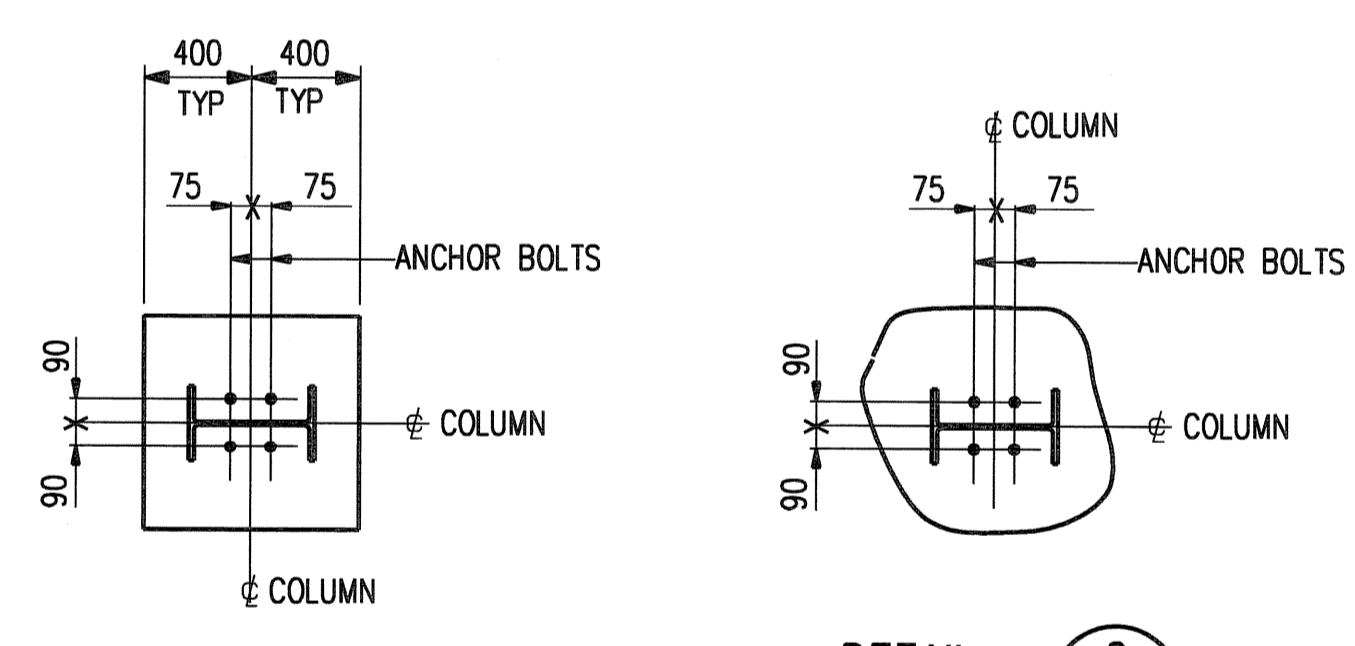


©Bechtel Corporation 2008. All rights reserved. Bechtel Confidential. Contains information that is confidential and proprietary to Bechtel and may not be used, reproduced, or disclosed in any format without Bechtel's prior written permission. This document is prepared exclusively for Gassnova in connection with the preparation of the FEED study for the CO2 Capture Facility at Karsto, Norway, and is not to be relied upon by others or used in connection with any other project.



NOTES:

1. THESE DRAWINGS ARE INTENDED TO BE READ IN CONJUNCTION WITH THE DESIGN PHILOSOPHY AND ACCEPTANCE CRITERIA FOR CIVIL WORKS 25474-000-30Y-C016-00001. THIS DOCUMENT CONTAINS INFORMATION ON APPLICABLE STANDARDS AND MATERIAL SELECTION.
2. ELEVATION 7.200 CORRESPONDS TO + 7.200M OVER MSL.
3. ALL DIMENSIONS ARE IN MILLIMETERS. ALL ELEVATIONS AND COORDINATES ARE IN METERS, UNLESS NOTED OTHERWISE.
4. USE OF BLINDING CONCRETE (B20) IS PERMISSIBLE AS AN OPTION TO THE CONTRACTOR.
5. FOR ADDITIONAL SUBSURFACE STRUCTURES DETAILS, SEE DWG 000-CY-000-00001.



PARTIAL PLAN FOUNDATIONS
WORK THIS DRAWING WITH DRAWING 000-DB-0200-00002

ISSUED FOR COMMENT		JR		Rus		Rus		Rus	
NO.	DATE	REVISIONS	BY	CHK	DES	ENGR	PROJ	APPR	
GASSNOVA		CO2 KARSTO PROJECT							
10112936-PB-C-1ED-0009		CCC PLANT FOUNDATION PLAN WITH TYPICAL SECTIONS AND DETAILS SHEET 1 OF 4							
BECHTEL POWER CORPORATION		JOB NO. 25474-000		DRAWING NO. DB-0200-00001		REV. 0			