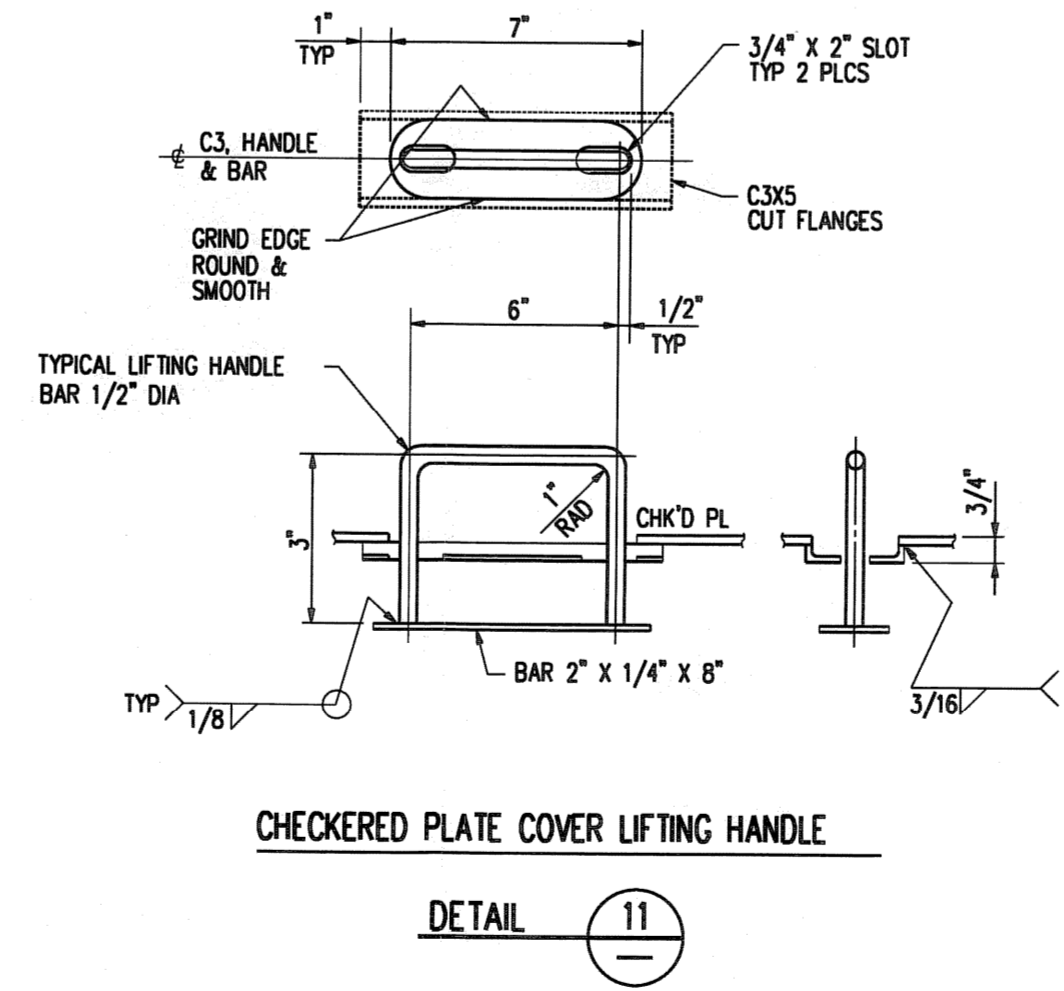
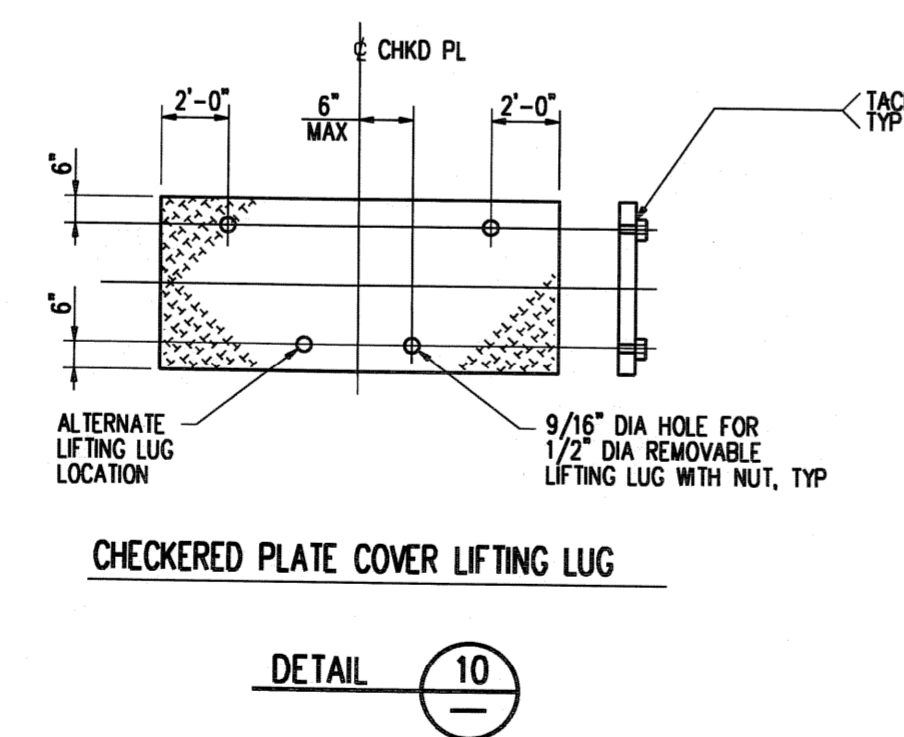
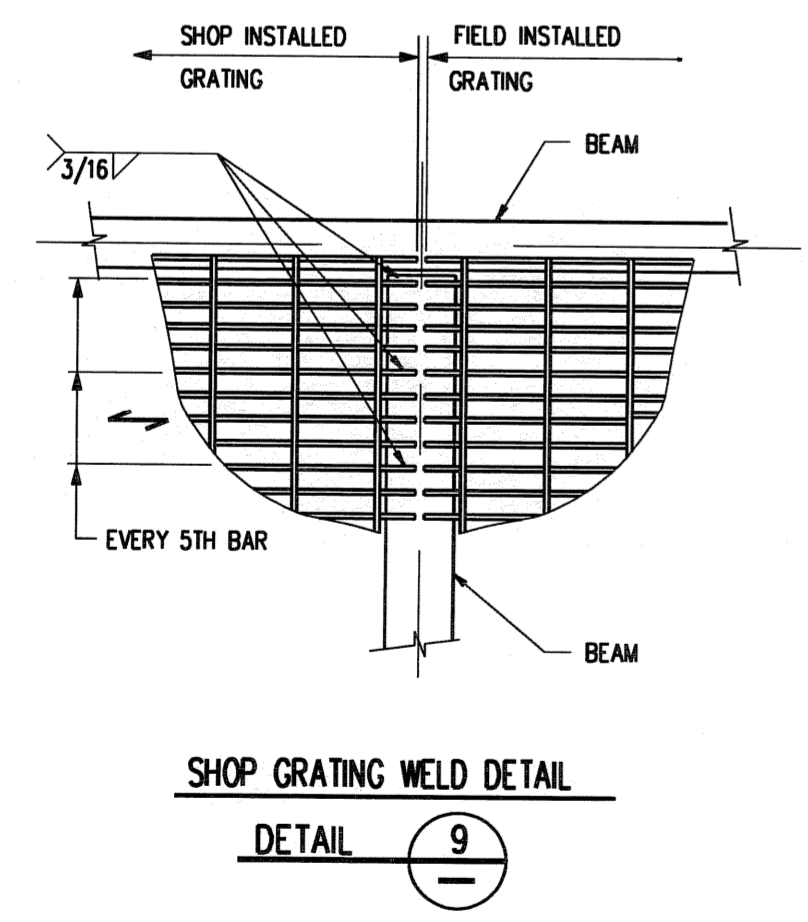
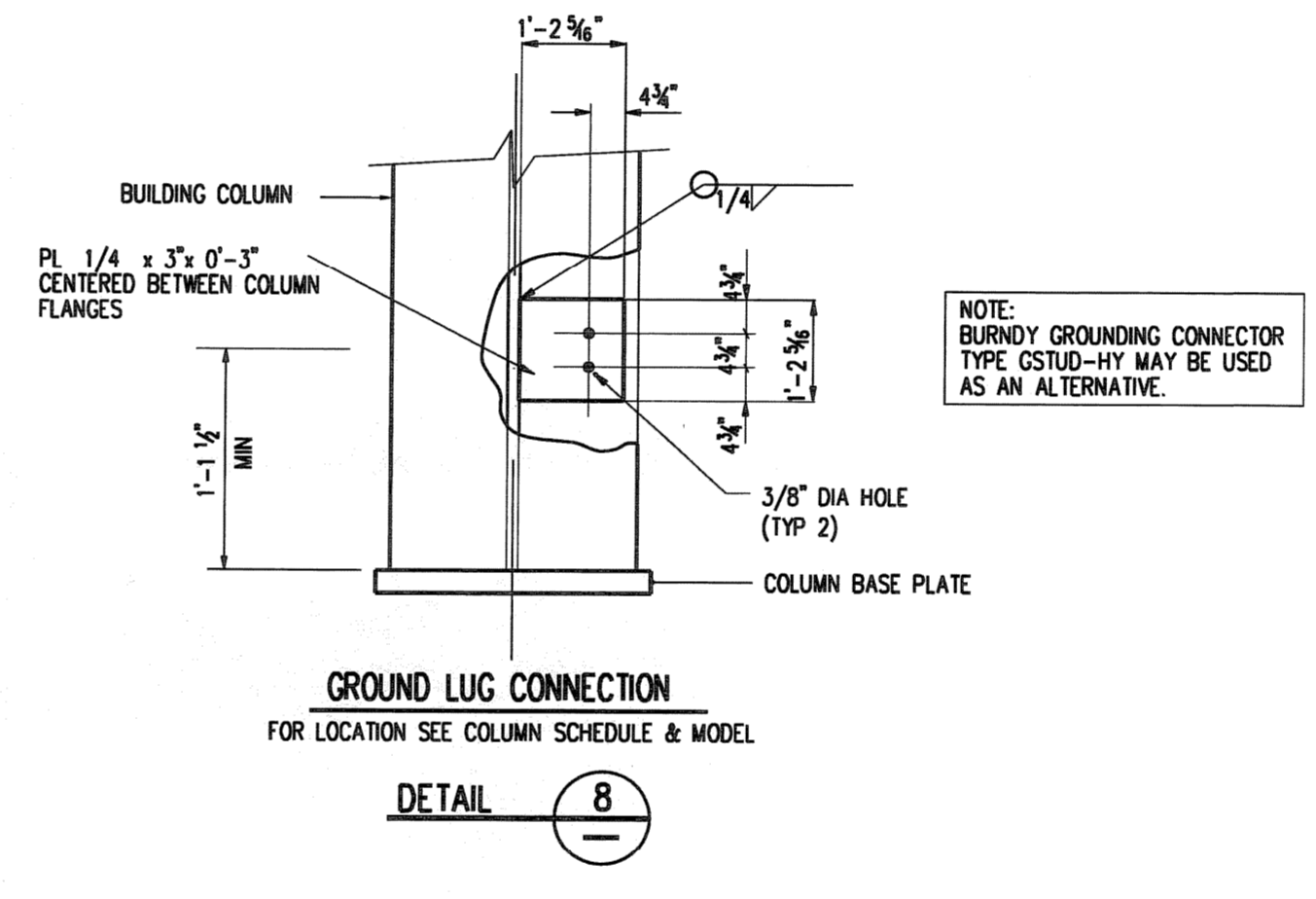
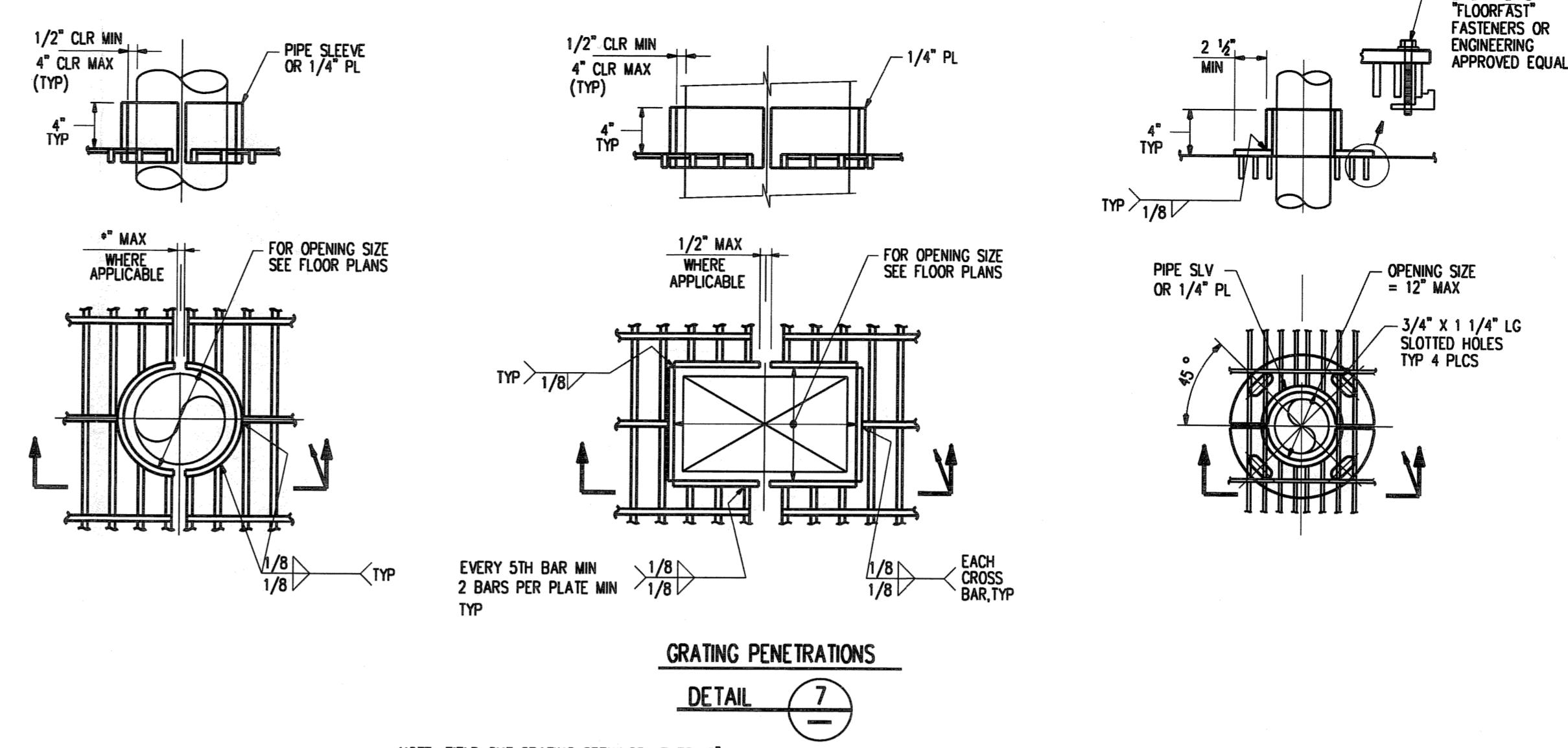
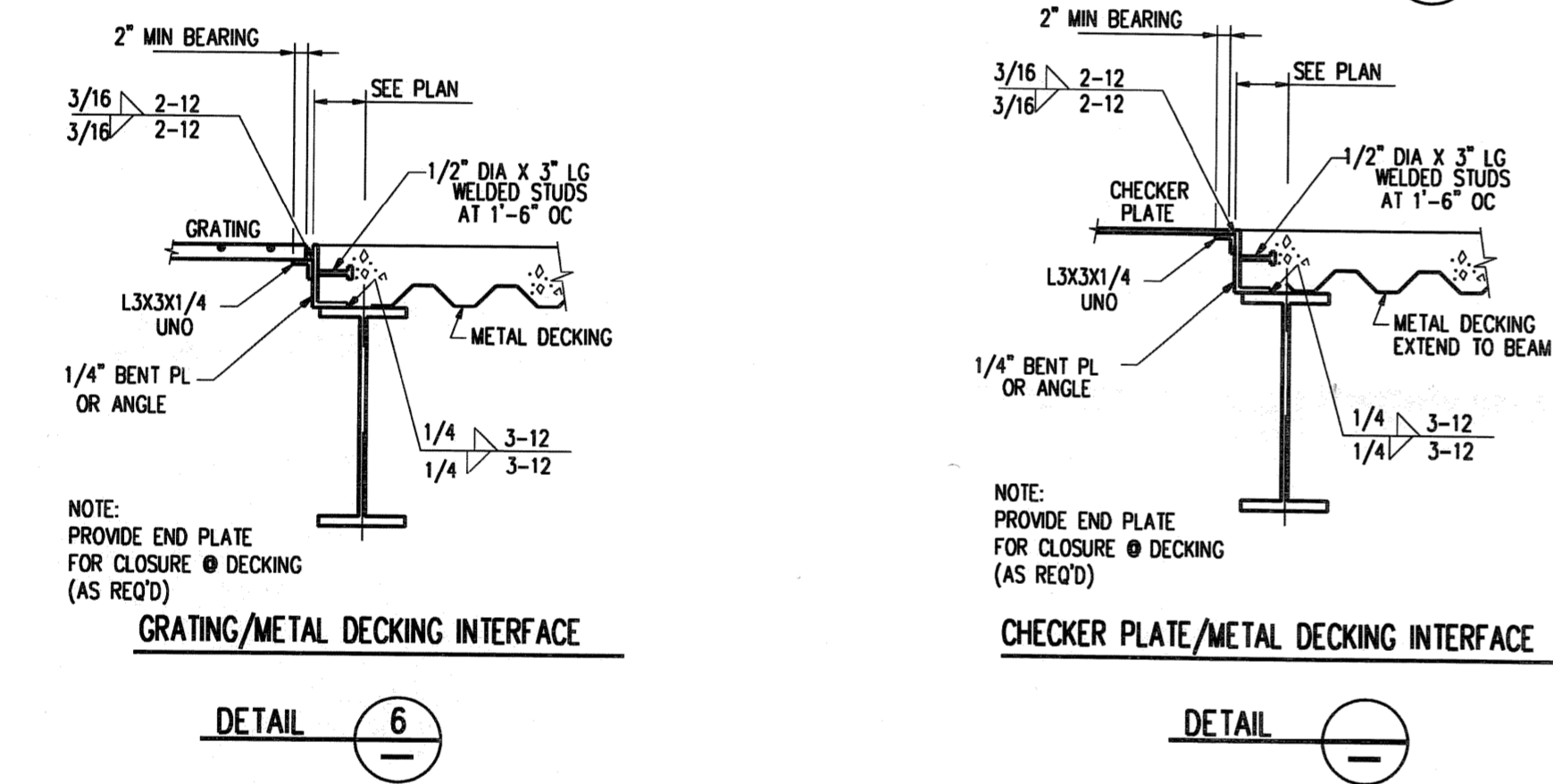
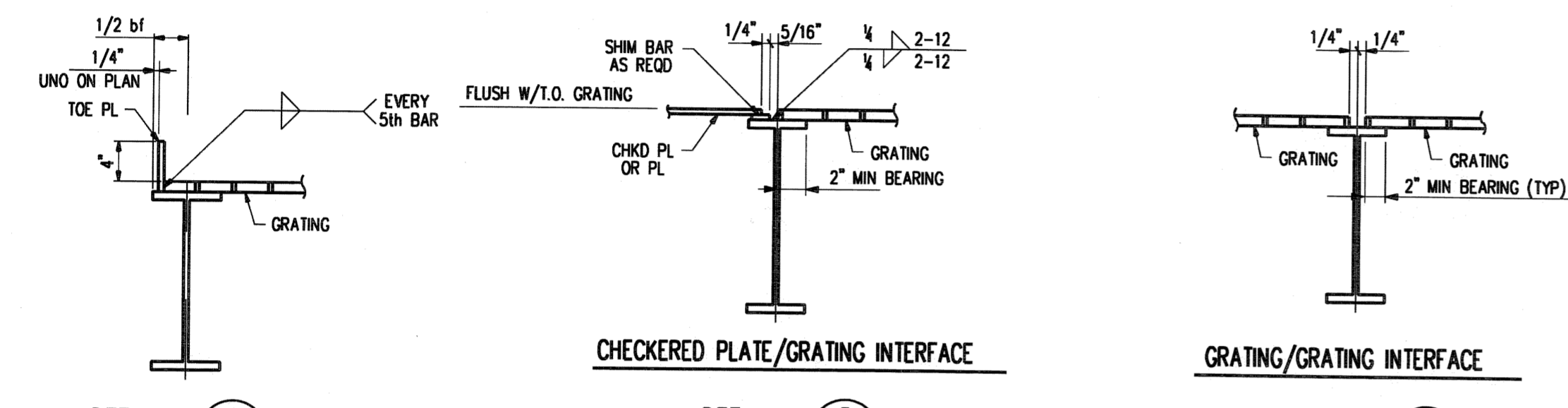
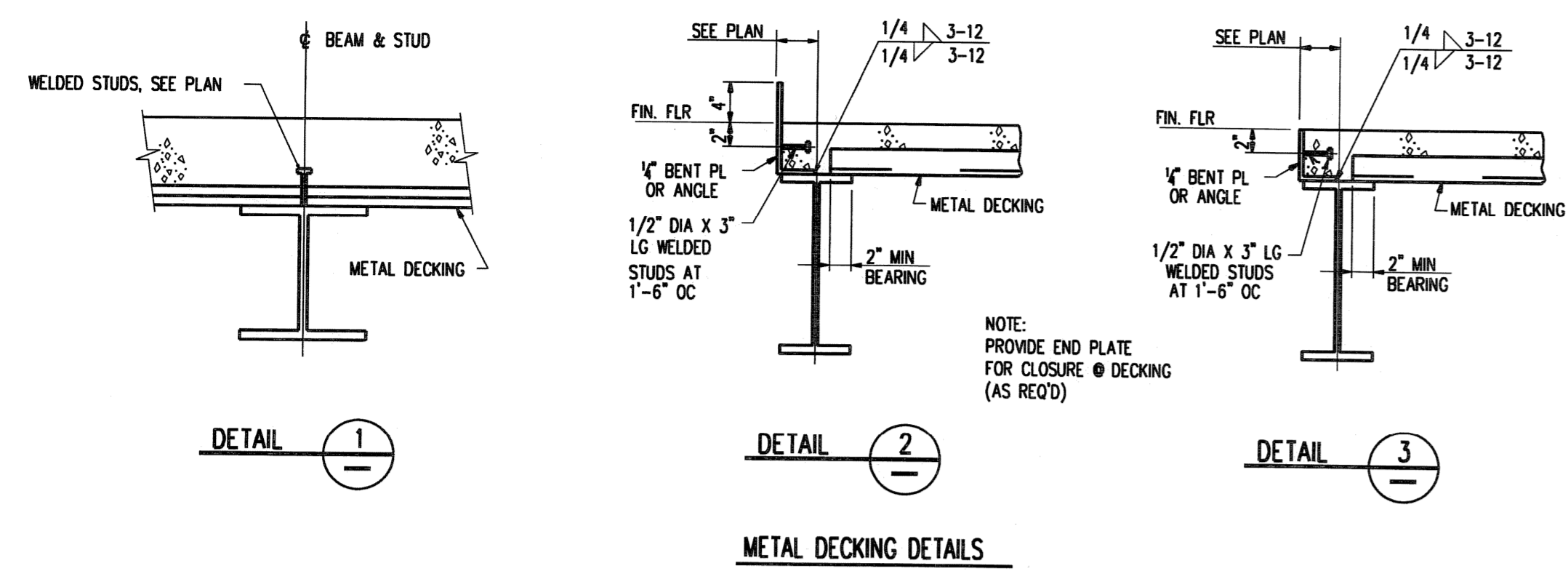


©Bechtel Corporation 2008. All rights reserved. Bechtel Confidential. Contains information that is confidential and proprietary to Bechtel and may not be used, reproduced, or disclosed in any format without Bechtel's prior written permission. This document is prepared for the CO2 Capture Facility at Karsto, Norway, and is not to be relied upon by others or used in connection with any other project.



GENERAL NOTES:

- BOLTED CONNECTIONS SHALL BE IN ACCORDANCE TO AISC STANDARDS.
- WELDING SHOWN SHALL BE IN ACCORDANCE TO THE AWS D1.1, STRUCTURAL WELDING CODE.
- STRUCTURAL AND MISCELLANEOUS STEEL CONFORM TO THE FOLLOWING:
 - A. ASTM A-36 STEEL: ANGLES, TOE PLATES, HANDRAIL (EXCLUDING HANDRAIL POSTS) AND CONNECTION MATERIAL.
 - B. ASTM A-572, GRADE 50, OR A992 STEEL: W SHAPES, CHANNELS, S SHAPES, WT SHAPES, COLUMN BASE PLATES AND PLATE GRIDDERS INCLUDING STIFFENER PLATES.
 - C. ASTM A-913, GRADE 65 STEEL: W SHAPES WHERE SPECIFIED.
 - D. ASTM A500, GRADE B: HOLLOW STRUCTURAL SECTIONS.
 - E. ASTM A53, GRADE 50: HANDRAIL PIPE POSTS AND PIPE BRACING.
 - F. MISCELLANEOUS PLATE STEEL, GUSSET PLATES, STIFFENER PLATES, CAP PLATES, POST PLATES AND ALL OTHER MISCELLANEOUS PLATES SHALL CONFORM TO ASTM A-36.
- WELDED STUDS SHALL BE FURNISHED AND INSTALLED IN ACCORDANCE WITH AWS D1.1.

NO.	DATE	REVISIONS	BY	CHK	APP

ISSUED FOR COMMENT

Owner: **GASSNOVA**

Contractor: **BECHTEL POWER CORPORATION**

Project: **CO2 KARSTO PROJECT**

Sheet: **STRUCTURAL STEEL SHEET**

Title: **TYPICAL SECTIONS AND DETAILS**

Job No.: 25474-000

Drawing No.: SO-0000-00001

Rev.: 0