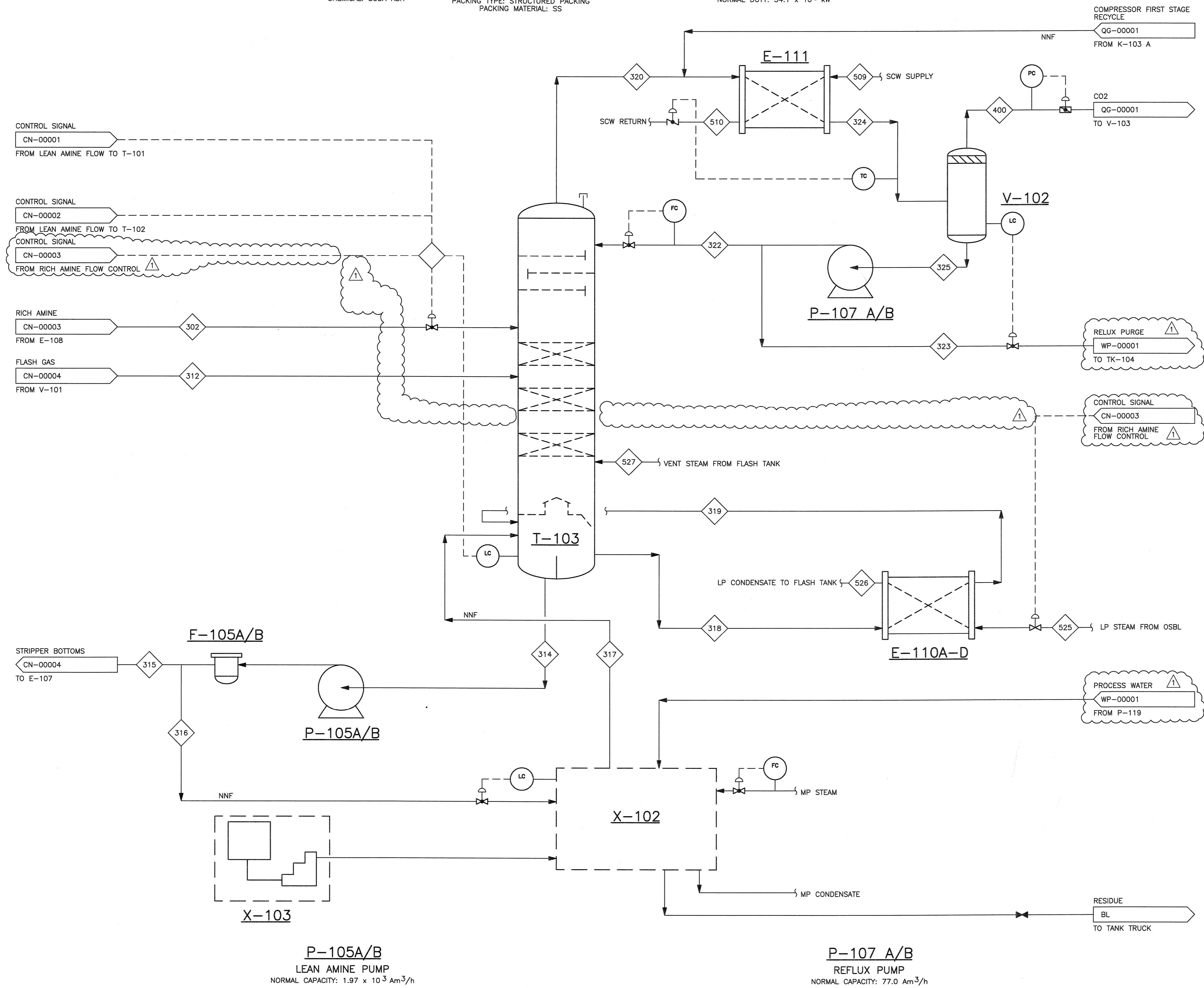


©Bechtel Corporation 2008. All rights reserved. Bechtel Confidential. Contains information that is confidential and proprietary to Bechtel and may not be used, reproduced or disclosed in any format without Bechtel's prior written permission. This document is prepared exclusively for Gassnova in connection with the preparation of the FEED study for the CO₂ Capture Facility at Karsto, Norway, and is not to be relied upon or used in connection with any other project.

F-105A/B LEAN AMINE MECHANICAL FILTER NORMAL FLOW: 1.97 x 10 ³ Am ³ /h PARTICLE SIZE REMOVAL: 10 MICRON	X-103 RECLAIMER CHEMICAL FEED PACKAGE CHEMICAL: SODA ASH	T-103 STRIPPER INTERNAL DIAMETER: 6.67 m LENGTH T/T: 42.6 m PACKING TYPE: STRUCTURED PACKING PACKING MATERIAL: SS	X-102 AMINE RECLAIMER	E-111 OVERHEAD STRIPPER CONDENSER NORMAL DUTY: 54.1 x 10 ³ kW	E-110A-D STRIPPER REBOILER NORMAL DUTY: 115.9 x 10 ³ kW	V-102 STRIPPER REFLUX DRUM
---	--	---	---------------------------------	--	---	--------------------------------------

NOTES:
1. -



12/10/08	RE-ISSUED FOR APPROVAL	DM	UP	-	RS	BL	BL					
10/10/08	ISSUED FOR APPROVAL	GR	DM	-	RS	-	-					
NO.	DATE	REVISIONS					BY	CHK	DES	ENGR	PRD	APPR
Owner		GASSNOVA										
Owner Drawing No.		10112936-PB-P-FLD-0008										
Contractor		BECHTEL CORPORATION FREDERICK, MARYLAND										
Project		CO ₂ KARSTO PROJECT										
Drawing Title		PROCESS FLOW DIAGRAM STRIPPER										
Sheet Size		594x841 "A1"		Scale: N.T.S.								
Job No.		25474		Drawing No.				000-M5-CN-00005				
Rev.		1										