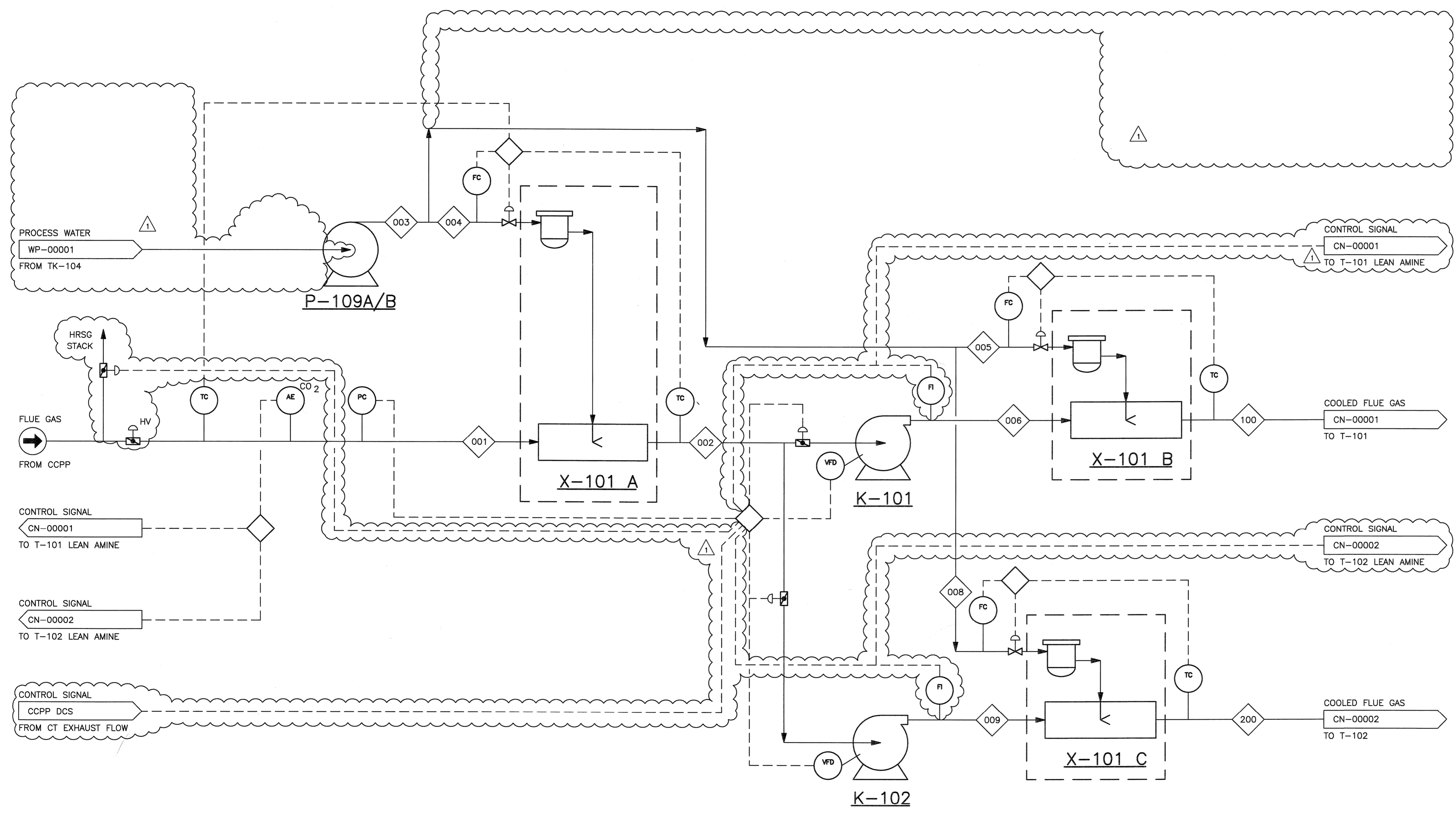


**X-101 A**  
 FLUE GAS WATER FOGGER SYSTEM  
 NORMAL FLUE GAS FLOW RATE:  $2.68 \times 10^6 \text{ Am}^3/\text{h}$

**X-101 B/C**  
 FLUE GAS WATER FOGGER SYSTEM  
 NORMAL FLUE GAS FLOW RATE:  $1.17 \times 10^6 \text{ Am}^3/\text{h}$

NOTES:  
 1. -

©Bechtel Corporation 2008. All rights reserved. Bechtel Confidential. Contains information that is confidential and proprietary to Bechtel and may not be used, reproduced, or disclosed in any format without Bechtel's prior written permission. This document is prepared exclusively for Gasnova in connection with the preparation of the FEED study for the CO2 Capture Facility at Karsto, Norway, and is not to be relied upon by others or used in connection with any other project.



**P-109A/B**  
 FLUE GAS FOGGER WATER SUPPLY PUMP  
 NORMAL FLOW:  $72.4 \text{ Am}^3/\text{h}$

**K-101**  
 FLUE GAS BLOWER (ABSORBER 1)  
 NORMAL VOLUMETRIC CAPACITY AT INLET CONDITIONS:  
 $1.17 \times 10^6 \text{ Am}^3/\text{h}$

**K-102**  
 FLUE GAS BLOWER (ABSORBER 2)  
 NORMAL VOLUMETRIC CAPACITY AT INLET CONDITIONS:  
 $1.17 \times 10^6 \text{ Am}^3/\text{h}$

12 Nov 08	RE-ISSUED FOR APPROVAL	DM	UP	-	RS	RS	WZ					
10/10/08	ISSUED FOR APPROVAL	GR	DM	-	RS	-	-					
NO.	DATE	REVISIONS					BY	CHK	DES	ENGR	PRD	APPR
Owner		GASSNOVA										
Owner Drawing No.		10112936-PB-P-FLD-0003										
Contractor		BECHTEL POWER CORPORATION FREDERICK, MARYLAND										
Project		CO2 KARSTO PROJECT										
Section		PROCESS FLOW DIAGRAM BLOWER & QUENCH SECTION										
Sheet Size	594x841 "A1"	Scale	N.T.S.									
JOB NO.	25474	DRAWING NO.	000-M5-BA-00001									
REV.	1											