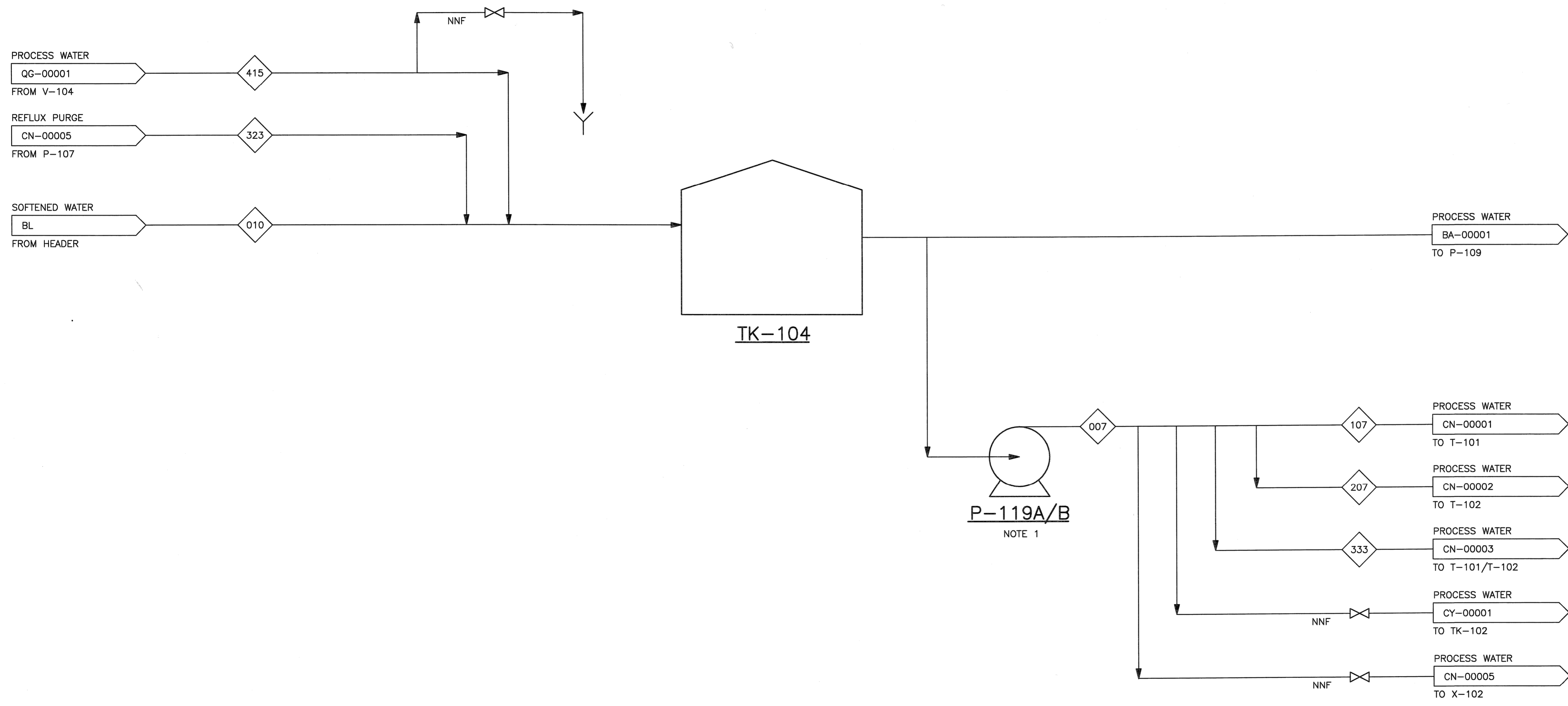


©Bechtel Corporation 2008. All rights reserved. Bechtel Confidential. Contains information that is confidential and proprietary to Bechtel and may not be used, reproduced, or disseminated in any form without Bechtel's prior written permission. This document is prepared exclusively for Gassnova in connection with the preparation of the FEED study for the CO2 Capture Facility at Karsto, Norway, and is not to be relied upon by others or used in connection with any other project.

**TK-104**  
 PROCESS WATER SURGE TANK

NOTES:  
 1. NEW ITEM.



**P-119A/B**  
 ABSORBER MAKEUP WATER PUMP  
 NORMAL FLOW: 15 Am<sup>3</sup>/h  
 NOTE 1

		<b>GASSNOVA</b>		<b>CO2 KARSTO PROJECT</b>	
<small>Owner</small> 10112936-PB-P-FLD-0012		<small>Contractor</small> <b>BECHTEL POWER CORPORATION</b> FREDERICK, MARYLAND			
<small>Job No.</small> 25474		<small>Drawing No.</small> 000-M5-WP-00001		<small>Rev.</small> 0	