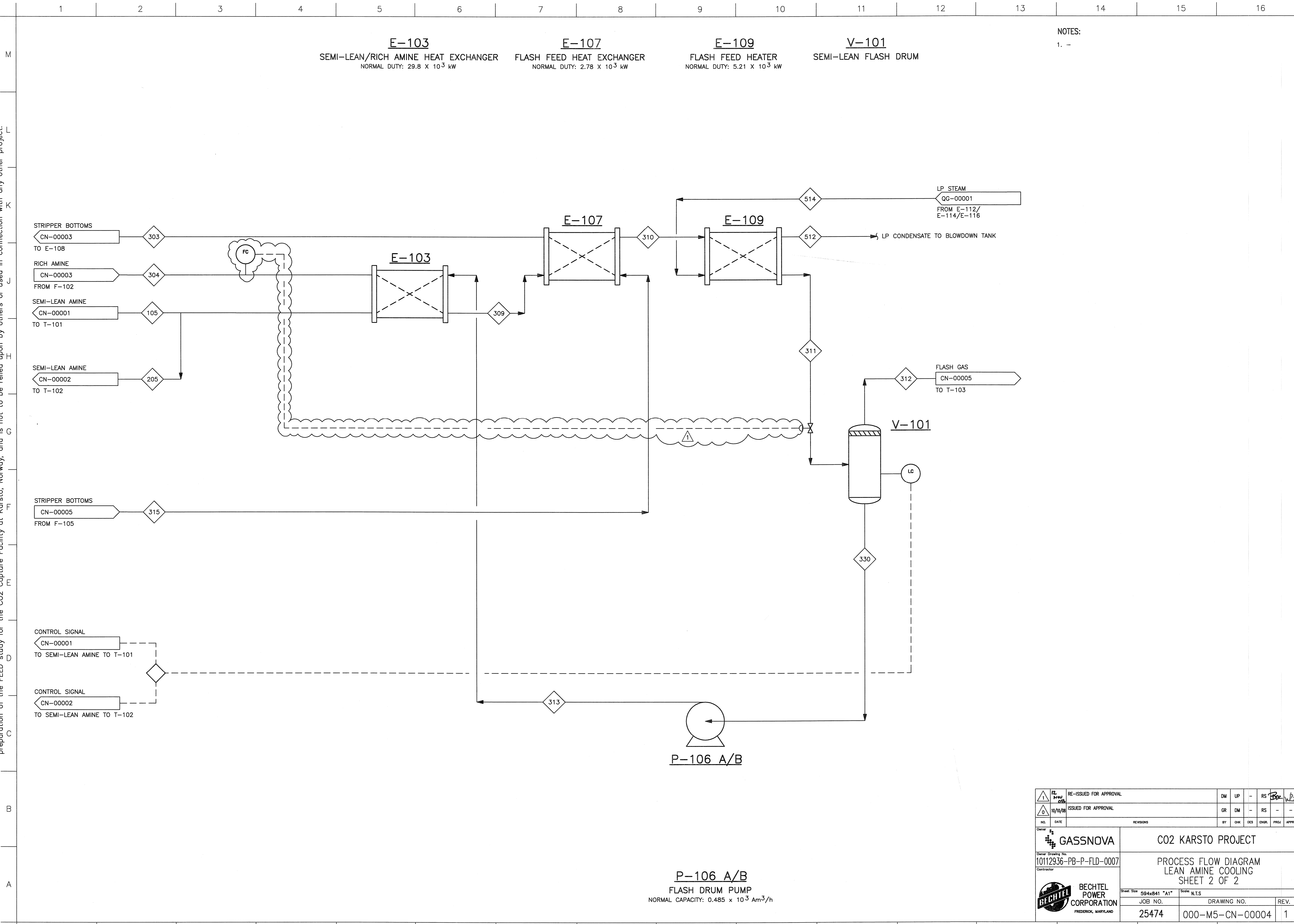


©Bechtel Corporation 2008. All rights reserved. Bechtel Confidential. Contains information that is confidential and proprietary to Bechtel and may not be used, reproduced or disclosed in any form without Bechtel's prior written permission. This document is prepared exclusively for Gassnova in connection with the preparation of the FEED study for the CO2 Capture Facility at Karsto, Norway, and is not to be relied upon by others or used in connection with any other project.



|  |                     |  |    |                                       |     |                  |       |       |
|--|---------------------|--|----|---------------------------------------|-----|------------------|-------|-------|
| 12   | NEW                 | RE-ISSUED FOR APPROVAL                                     | DM | UP                                    | -   | RS               | Bo    | Bo    |
| 10/10/08   | ISSUED FOR APPROVAL |  | GR | DM                                    | -   | RS               | -     | -     |
| NO.  | DATE                | REVISIONS  | BY | CHK                                   | DES | ENGR.            | PROJ. | APPR. |
|  |                     | <b>CO2 KARSTO PROJECT</b>                                  |    |                                       |     |                  |       |       |
| Owner Drawing No.<br><b>10112936-PB-P-FLD-0007</b> |                     | PROCESS FLOW DIAGRAM<br>LEAN AMINE COOLING<br>SHEET 2 OF 2 |    |                                       |     |                  |       |       |
|  |                     | BECHTEL POWER CORPORATION<br>FREDERICK, MARYLAND           |    |                                       |     |                  |       |       |
| Sheet Size: 594x841 "A1" Scale: N.T.S.             |                     | JOB NO.<br><b>25474</b>                                    |    | DRAWING NO.<br><b>000-M5-CN-00004</b> |     | REV.<br><b>1</b> |       |       |