

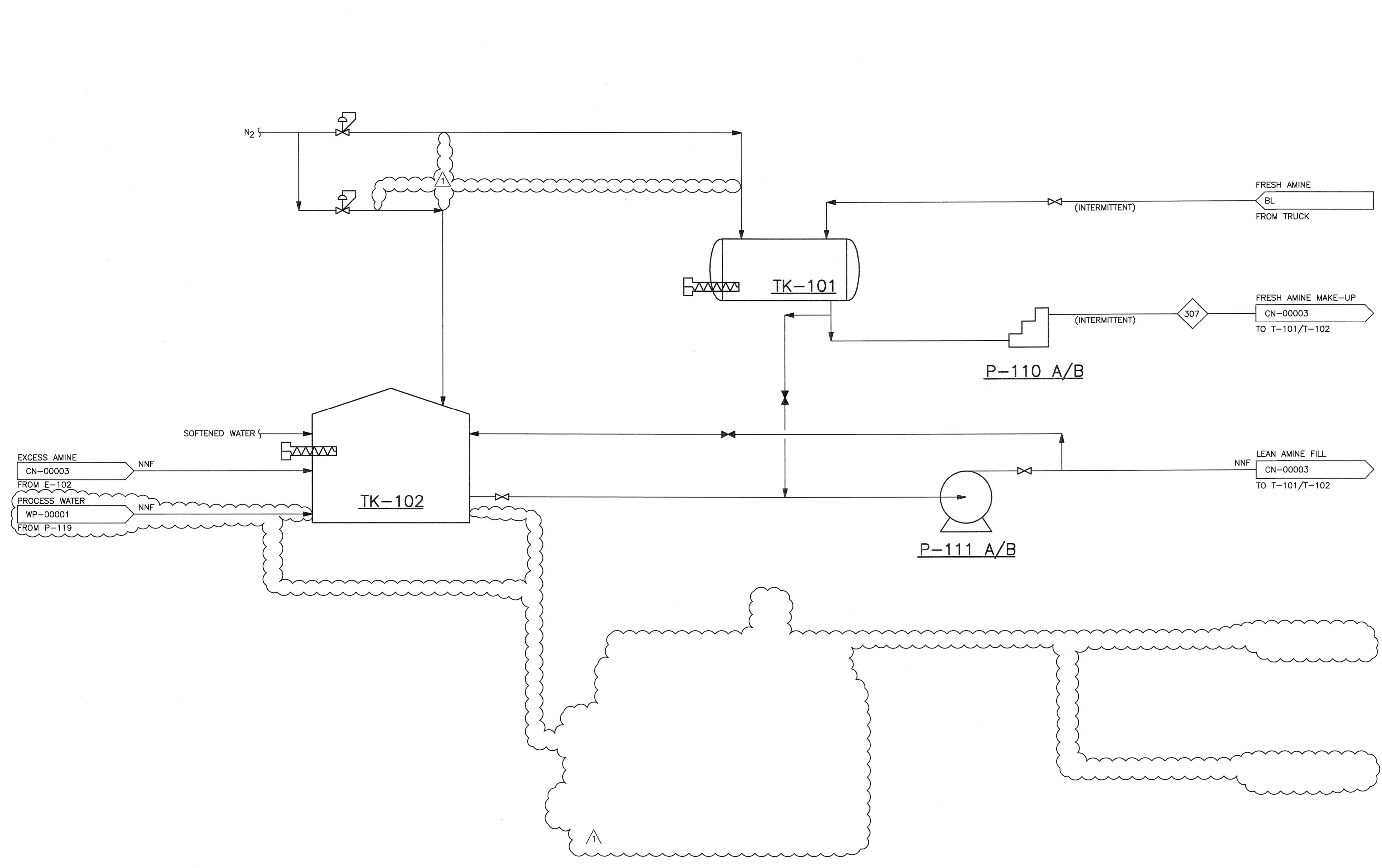
©Bechtel Corporation, 2008. All rights reserved. Bechtel Confidential. Contains information that is confidential and proprietary to Bechtel and may not be used, reproduced, or disclosed in any format without Bechtel's prior written permission. This document is prepared exclusively for Gassnova in connection with the preparation of the FEED study for the CO2 Capture Facility at Karsto, Norway, and is not to be relied upon by others or used in connection with any other project.

1 2 3 4 5 6 7 8 9 10 11 12 13 14 15 16

**TK-102**  
LEAN AMINE SOLVENT (35% MEA) STORAGE TANK

**TK-101**  
AMINE STORAGE TANK (CONCENTRATED)

NOTES:  
1. -



EXCESS AMINE  
CN-00003  
FROM E-102

PROCESS WATER  
WP-00001  
FROM P-119

SOFTENED WATER

N<sub>2</sub>

**TK-102**

**TK-101**

**P-110 A/B**

**P-111 A/B**

FRESH AMINE  
BL  
FROM TRUCK

FRESH AMINE MAKE-UP  
CN-00003  
TO T-101/T-102

LEAN AMINE FILL  
CN-00003  
TO T-101/T-102

**P-112 A/B**  
AMINE WASTE SUMP PUMP

**P-111 A/B**  
LEAN AMINE SOLVENT FILL PUMP

**P-110 A/B**  
FRESH AMINE METERING PUMP

12 Nov 08	RE-ISSUED FOR APPROVAL	DM	UP	-	RS	2	10/3					
10/10/08	ISSUED FOR APPROVAL	GR	DM	-	RS	-	-					
NO.	DATE	REVISIONS					BY	CHK	DES	ENGR	PRD	APPR
Owner		GASSNOVA										
Owner Drawing No.		10112936-PB-P-FLD-0009										
Contractor		BECHTEL POWER CORPORATION FREDERICK, MARYLAND										
Project		CO2 KARSTO PROJECT										
Drawing Title		PROCESS FLOW DIAGRAM FRESH & LEAN AMINE STORAGE										
Sheet Size	594x841 "A1"	Scale	N.T.S.									
JOB NO.	25474	DRAWING NO.	000-M5-CY-00001									
REV.	1											

1 2 3 4 5 6 7 8 9 10 11 12 13 14 15 16