

©Bechtel Corporation 2008. All rights reserved. Bechtel Confidential. Contains information that is confidential and proprietary to Bechtel and may not be used, reproduced or disclosed in any format without Bechtel's prior written permission. This document is prepared exclusively for Gassnova in connection with the preparation of the FEED study for the CO₂ Capture Facility at Karsto, Norway, and is not to be relied upon by others or used in connection with any other project.

1 2 3 4 5 6 7 8 9 10 11 12 13 14 15 16

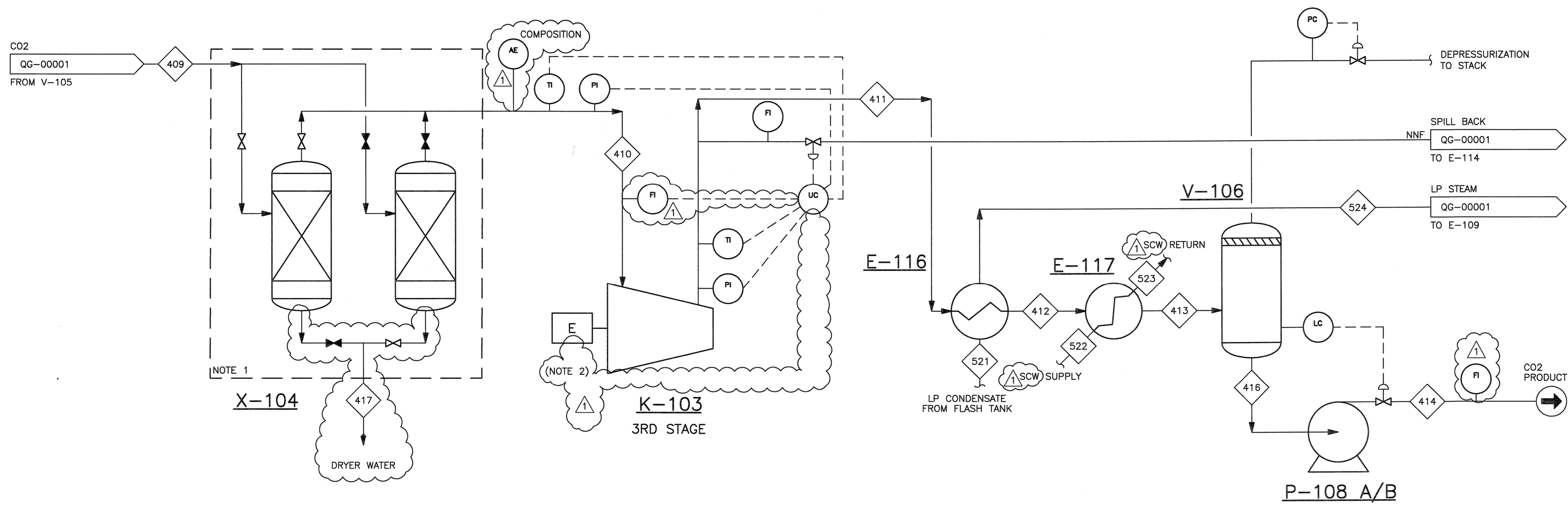
X-104
 CO₂ DRYING PACKAGE
 NORMAL FLOW RATE: 2.8 x 10³ Am³/h

E-116
 CO₂ COMPRESSOR 3RD STAGE
 STEAM GENERATOR
 NORAML DUTY: 2.1 x 10³ kW

E-117
 CO₂ COOLER
 NORAML DUTY: 9.4 x 10³ kW

V-106
 CO₂ SURGE DRUM

NOTES:
 1. DRYING PACKAGE ONE DRUM ON-LINE
 ONE DRUM ON REGENERATION.
 2. SINGLE MOTOR FOR ALL THREE STAGES OF THE COMPRESSOR.



NOTE 1

(NOTE 2)

K-103 C
 CO₂ COMPRESSOR (3RD STAGE)
 NORAML VOLUMETRIC CAPACITY AT INLET
 CONDITIONS: 2.8 x 10³ Am³/h

P-108 A/B
 CO₂ PRODUCT SENDOUT PUMP
 NORAML CAPACITY: 176 Am³/h

	12/04/08	RE-ISSUED FOR APPROVAL	DM	UP	-	RS	Bo		
	10/10/08	ISSUED FOR APPROVAL	GR	DM	-	RS	-		
NO.	DATE	REVISIONS	BY	CHK	DES	ENGR	PROJ	APPR	
Owner		GASSNOVA						CO ₂ KARSTO PROJECT	
Owner Drawing No.		10112936-PB-P-FLD-0011						PROCESS FLOW DIAGRAM COMPRESSION & DRYING SECTION SHEET 2 OF 2	
Contractor				BECHTEL POWER CORPORATION		FREDERICK, MARYLAND			
Sheet Size		594x841 "A1"		Scale		N.T.S.			
JOB NO.		25474		DRAWING NO.		000-M5-QG-00002			
REV.		1							

1 2 3 4 5 6 7 8 9 10 11 12 13 14 15 16

M
L
K
J
H
G
F
E
D
C
B
A