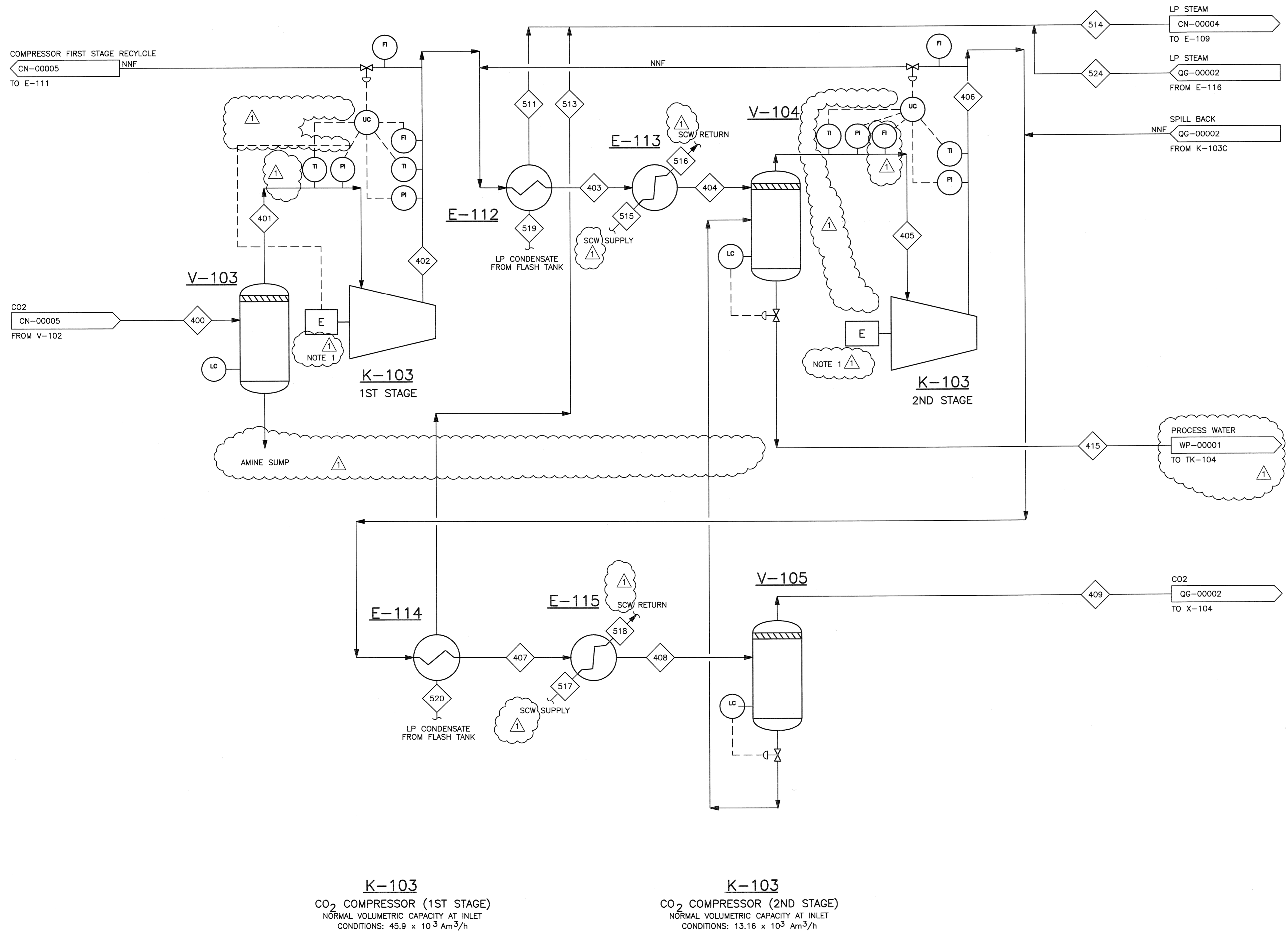


©Bechtel Corporation, 2008. All rights reserved. Bechtel, Confidential, and proprietary information that is confidential and proprietary to Bechtel and may not be used, reproduced, or disclosed in any form without the prior written permission of Bechtel. This information is provided for your information only and is not to be relied upon by others in connection with any other project.

**V-103** CO<sub>2</sub> COMPRESSOR SUCTION DRUM  
**E-114** CO<sub>2</sub> COMPRESSOR 2ND STAGE STEAM GENERATOR  
 NORMAL DUTY: 1.7 x 10<sup>3</sup> kW  
**E-112** CO<sub>2</sub> COMPRESSOR 1ST STAGE STEAM GENERATOR  
 NORMAL DUTY: 1.72 x 10<sup>3</sup> kW  
**E-115** CO<sub>2</sub> COMPRESSOR 2ND STAGE INTERCOOLER  
 NORMAL DUTY: 3.8 x 10<sup>3</sup> kW  
**E-113** CO<sub>2</sub> COMPRESSOR 1ST STAGE INTERCOOLER  
 NORMAL DUTY: 5.77 x 10<sup>3</sup> kW  
**V-105** CO<sub>2</sub> COMPRESSOR 2ND STAGE INTERSTAGE KNOCK-OUT DRUM  
**V-104** CO COMPRESSOR 1ST STAGE INTERSTAGE KNOCK-OUT DRUM

NOTES:  
 1. SINGLE MOTOR FOR ALL THREE STAGES OF COMPRESSOR.



12	RE-ISSUED FOR APPROVAL	DM	UP	-	RS	2/10/08				
0	ISSUED FOR APPROVAL	GR	DM	-	RS	-				
NO.	DATE	REVISORS			BY	CHK	DES	ENGR.	PRJ	APPR
Owner: GASSNOVA		CO2 KARSTO PROJECT								
User Drawing No: 10112936-PB-P-FLD-0010		PROCESS FLOW DIAGRAM COMPRESSION & DRYING SECTION SHEET 1 OF 2								
Contractor: BECHTEL POWER CORPORATION FREDERICK, MARYLAND		Sheet Size: 594x841 "A1"		Scale: N.T.S.						
JOB NO. 25474		DRAWING NO. 000-M5-QG-00001			REV. 1					