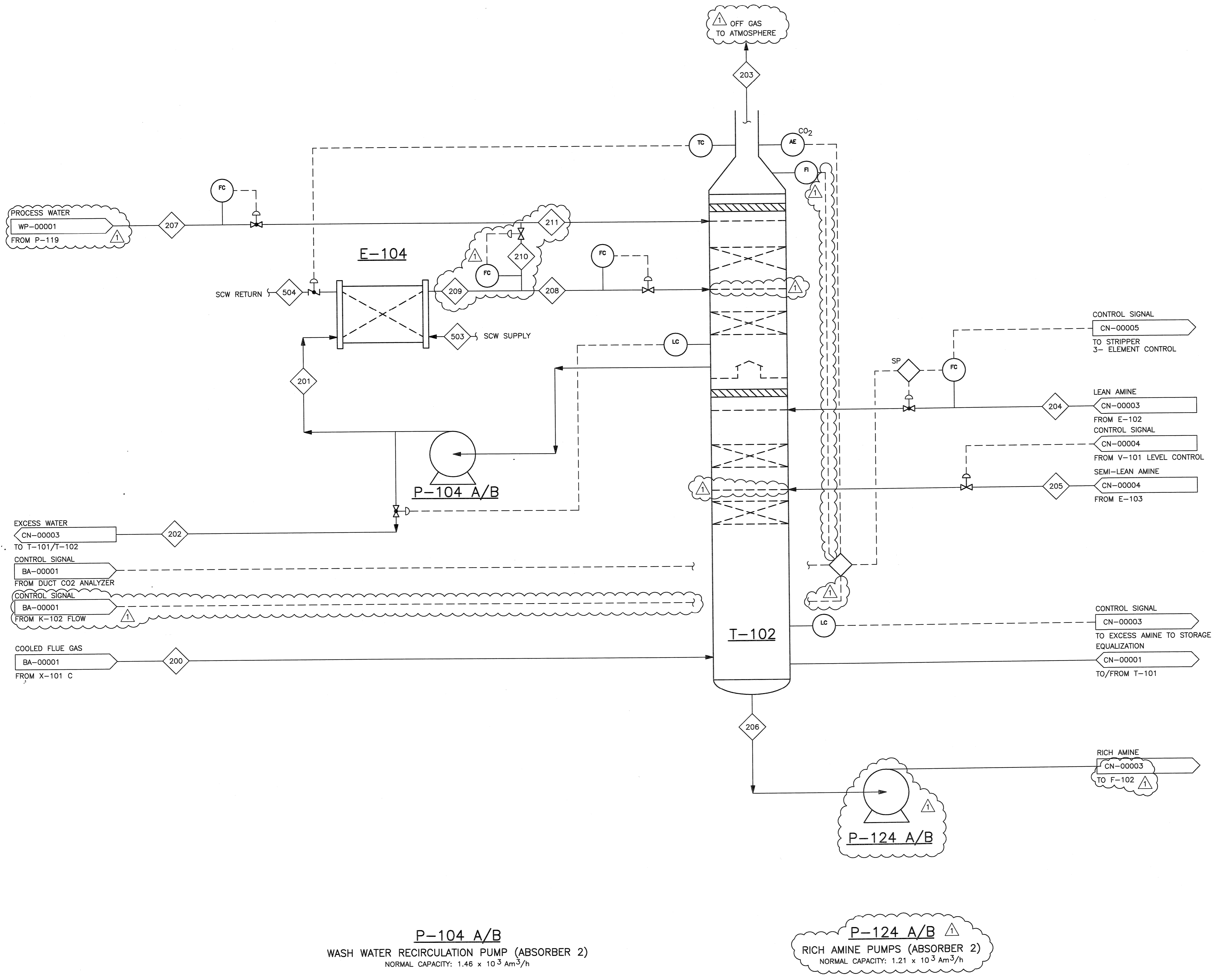


©Bechtel Corporation 2008. All rights reserved. Bechtel Confidential. Contains information that is confidential and proprietary to Bechtel and may not be used, reproduced, or disclosed in any format without Bechtel's prior written permission. This document is prepared exclusively for Gassnova and is not to be relied upon by others or used in connection with any other project.

E-104
 WASH WATER COOLER (ABSORBER 2)
 NORMAL DUTY: 52.7×10^3 kW

T-102
 CO2 ABSORBER
 INTERNAL DIAM: 11.8 m
 LENGTH T/T: 43.4 m
 PACKING TYPE: STRUCTURED PACKING
 PACKING MATERIAL: SS

NOTES:
 1. -



P-104 A/B
 WASH WATER RECIRCULATION PUMP (ABSORBER 2)
 NORMAL CAPACITY: 1.46×10^3 Am³/h

P-124 A/B
 RICH AMINE PUMPS (ABSORBER 2)
 NORMAL CAPACITY: 1.21×10^3 Am³/h

12/14/08	RE-ISSUED FOR APPROVAL	DM	UP	-	RS	12/14/08				
10/10/08	ISSUED FOR APPROVAL	GR	DM	-	RS	-				
NO.	DATE	REVISIONS			BY	CHK	DES	ENGR	PROJ	APPR
Owner		GASSNOVA								
Owner Drawing No.		10112936-PB-P-FLD-0005								
Contractor		BECHTEL POWER CORPORATION								
Project		CO2 KARSTO PROJECT								
Drawing Title		PROCESS FLOW DIAGRAM ABSORBER T-102								
Sheet Size		594x841 "A1"			Scale: N.T.S.					
Job No.		25474			Drawing No.			000-M5-CN-00002		
Rev.		1								