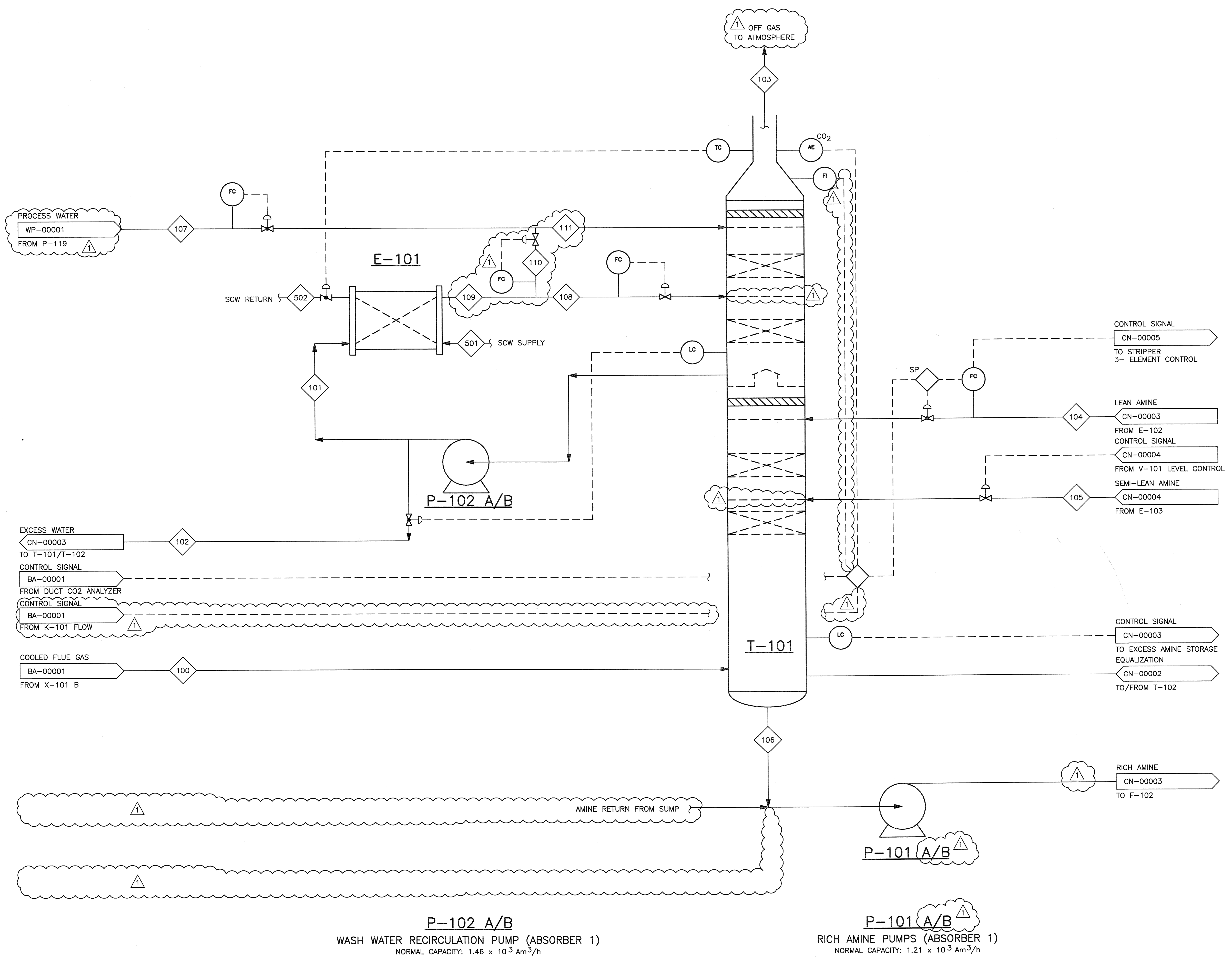


© Bechtel Corporation 2008. All rights reserved. Bechtel, Confidential. Contains information that is confidential and proprietary to Bechtel and may not be used, reproduced, or disclosed without Bechtel's prior written permission. This document is prepared for the use of the CO₂ capture facility at Karsto, Norway, and is not to be relied upon by others or used in connection with any other project.

E-101
 WASH WATER COOLER (ABSORBER 1)
 NORMAL DUTY: 52.7×10^3 kW

T-101
 CO₂ ABSORBER
 INTERNAL DIAM: 11.8 m
 LENGTH T/T: 43.4 m
 PACKING TYPE: STRUCTURED PACKING
 PACKING MATERIAL: SS

NOTES:
 1. -



P-102 A/B
 WASH WATER RECIRCULATION PUMP (ABSORBER 1)
 NORMAL CAPACITY: 1.46×10^3 Am³/h

P-101 A/B
 RICH AMINE PUMPS (ABSORBER 1)
 NORMAL CAPACITY: 1.21×10^3 Am³/h

12 Nov 08	RE-ISSUED FOR APPROVAL	DM	UP	-	RS	PL	WJS			
10/10/08	ISSUED FOR APPROVAL	GR	DM	-	RS	-	-			
NO.	DATE	REVISIONS			BY	CHK	DES	ENGR.	PROJ	APPR
Owner		GASSNOVA								
Contractor		BECHTEL POWER CORPORATION FREDERICK, MARYLAND								
Job No.		25474								
Drawing No.		000-M5-CN-00001								
Rev.		1								

CO₂ KARSTO PROJECT
 PROCESS FLOW DIAGRAM
 ABSORBER T-101

SHEET SIZE: 594x841 "A1"
 SCALE: N.T.S.