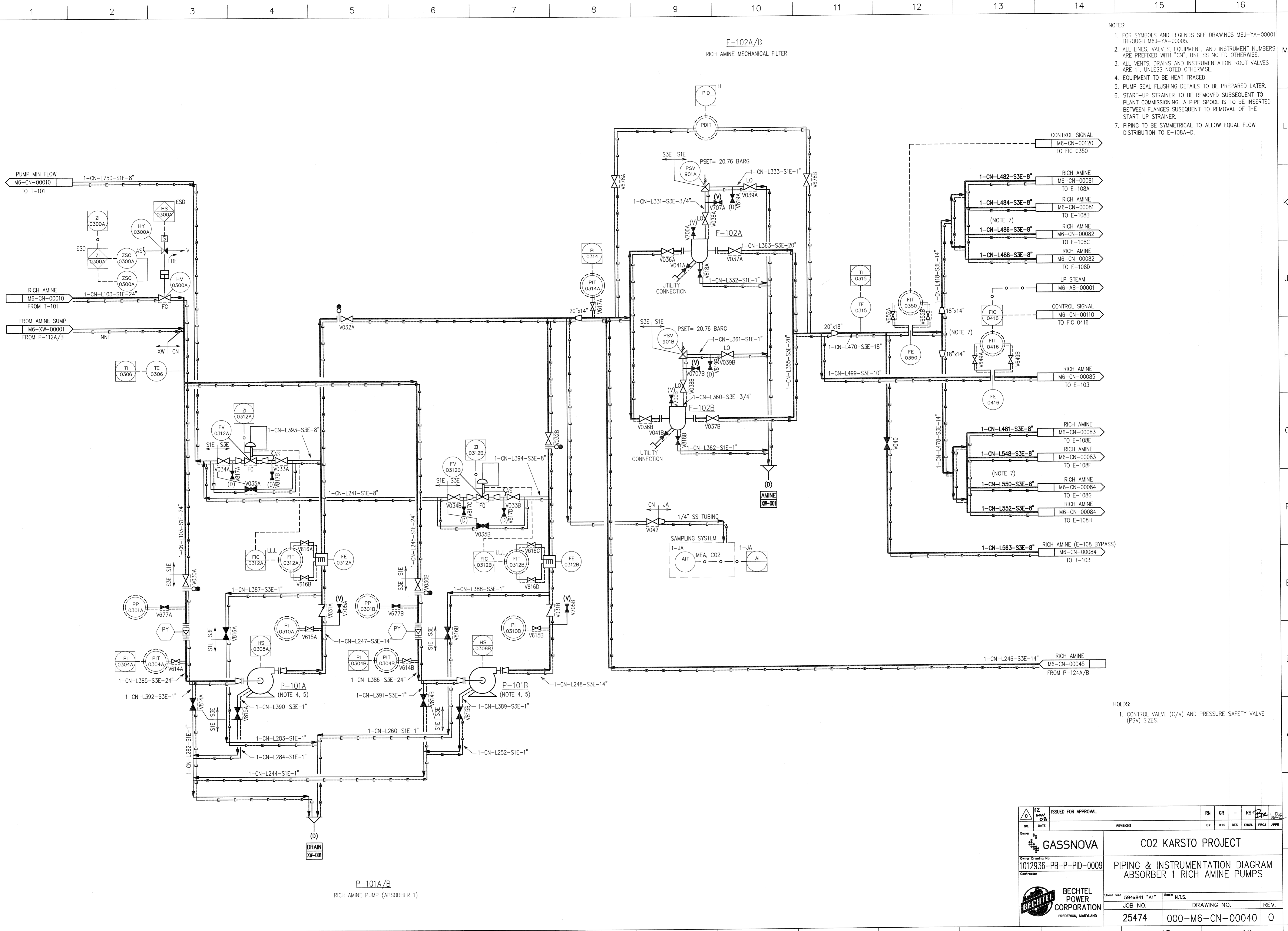


©Bechtel Corporation 2008. All rights reserved. Bechtel, Confidential, Bechtel logo, and other marks contained herein are trademarks of Bechtel Corporation, San Francisco, CA, USA. This document is prepared exclusively for Gassnova in connection with the preparation of the FEED study for the CO2 capture facility at Karsto, Norway, and is not to be relied upon by others or used in connection with any other project.



- NOTES:
- FOR SYMBOLS AND LEGENDS SEE DRAWINGS M6J-YA-0001 THROUGH M6J-YA-0005.
 - ALL LINES, VALVES, EQUIPMENT, AND INSTRUMENT NUMBERS ARE PREFIXED WITH "CN", UNLESS NOTED OTHERWISE.
 - ALL VENTS, DRAINS AND INSTRUMENTATION ROOT VALVES ARE 1", UNLESS NOTED OTHERWISE.
 - EQUIPMENT TO BE HEAT TRACED.
 - PUMP SEAL FLUSHING DETAILS TO BE PREPARED LATER.
 - START-UP STRAINER TO BE REMOVED SUBSEQUENT TO PLANT COMMISSIONING. A PIPE SPOOL IS TO BE INSERTED BETWEEN FLANGES SUBSEQUENT TO REMOVAL OF THE START-UP STRAINER.
 - PIPING TO BE SYMMETRICAL TO ALLOW EQUAL FLOW DISTRIBUTION TO E-108A-D.

HOLDS:
 1. CONTROL VALVE (C/V) AND PRESSURE SAFETY VALVE (PSV) SIZES.

		GASSNOVA		CO2 KARSTO PROJECT	
Owner Drawing No. 1012936-PB-P-PID-0009		PIPING & INSTRUMENTATION DIAGRAM ABSORBER 1 RICH AMINE PUMPS			
Contractor 		Sheet Size 594x841 "A1"		Scale N.T.S.	
Job No. 25474		Drawing No. 000-M6-CN-00040		Rev. 0	

P-101A/B
 RICH AMINE PUMP (ABSORBER 1)