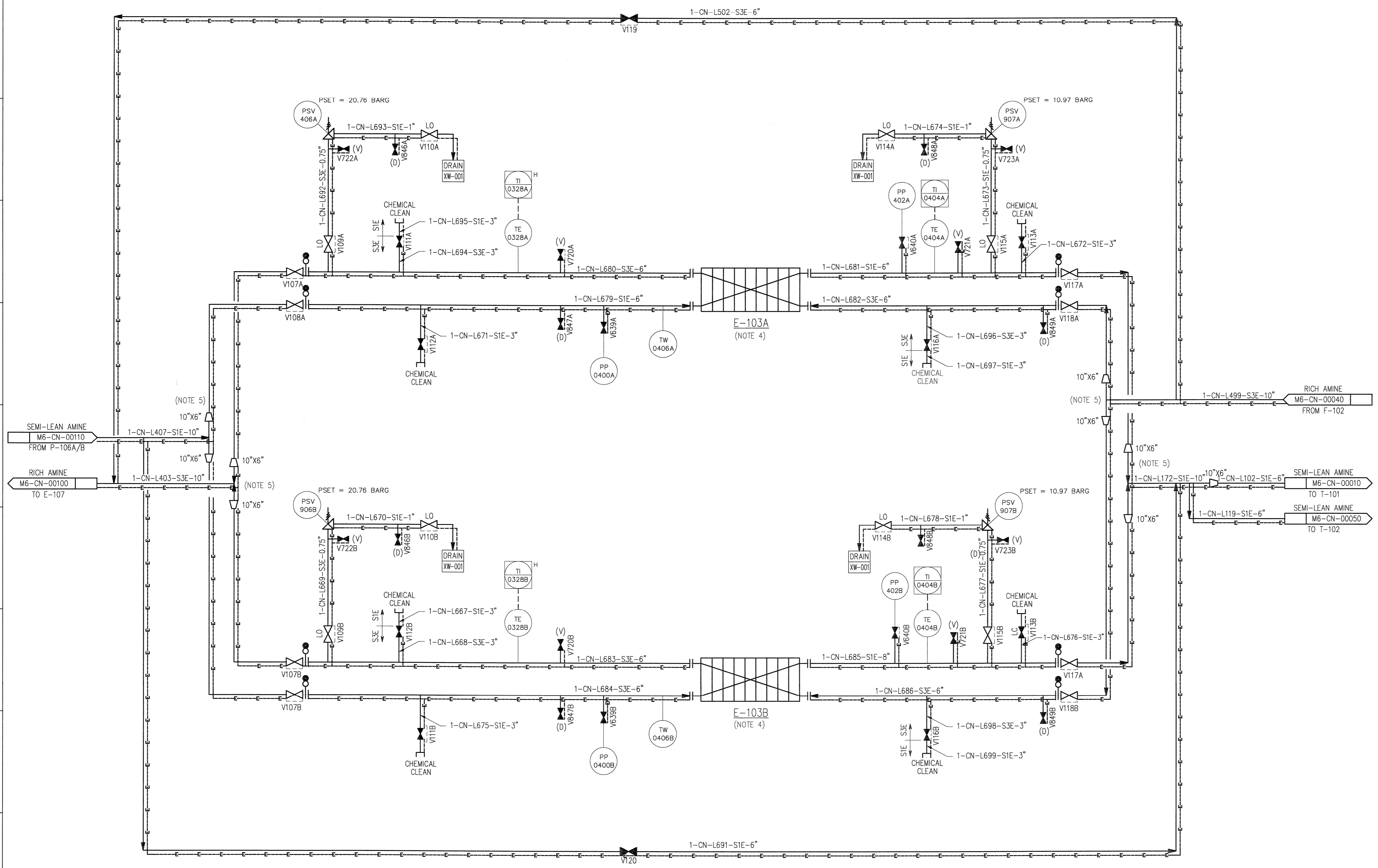


©Bechtel Corporation 2008. All rights reserved. Bechtel Confidential. Contains information that is confidential and proprietary to Bechtel and may not be used, reproduced, or disclosed in any format without Bechtel's prior written permission. This document is prepared exclusively for Gassnova in connection with the preparation of the FEED study for the CO2 Capture Facility at Karsto, Norway, and is not to be relied upon by others or used in connection with any other project.

E-103A/B
 SEMI-LEAN/RICH AMINE HEAT EXCHANGERS

- NOTES:**
- FOR SYMBOLS AND LEGENDS SEE DRAWINGS M6J-YA-00001 THROUGH M6J-YA-00005.
 - ALL LINES, VALVES, EQUIPMENT, AND INSTRUMENT NUMBERS ARE PREFIXED WITH "CN", UNLESS NOTED OTHERWISE.
 - ALL VENTS, DRAINS AND INSTRUMENTATION ROOT VALVES ARE 1", UNLESS NOTED OTHERWISE.
 - EQUIPMENT TO BE HEAT TRACED.
 - PIPING TO/FROM E-103A/B TO BE SYMMETRICAL TO ALLOW EQUAL FLOW DISTRIBUTION.

- HOLDS:**
- CONTROL VALVE (C/V) AND PRESSURE SAFETY VALVES (PSV) SIZES.



	GASSNOVA CO2 KARSTO PROJECT	ISSUED FOR APPROVAL NO. DATE REVISIONS BY CHK DES ENGR PROJ APPR
Owner Drawing No. 10112936-PB-PID-0019	PIPING & INSTRUMENT DIAGRAM SEMI-LEAN AMINE / RICH AMINE HEAT EXCHANGER	Scale: N.T.S. JOB NO. DRAWING NO. REV.
Contractor BECHTEL POWER CORPORATION FREDERICK, MARYLAND	Sheet Size: 594x841 "A1" 25474 000-M6-CN-00085 0	Sheet No. 08