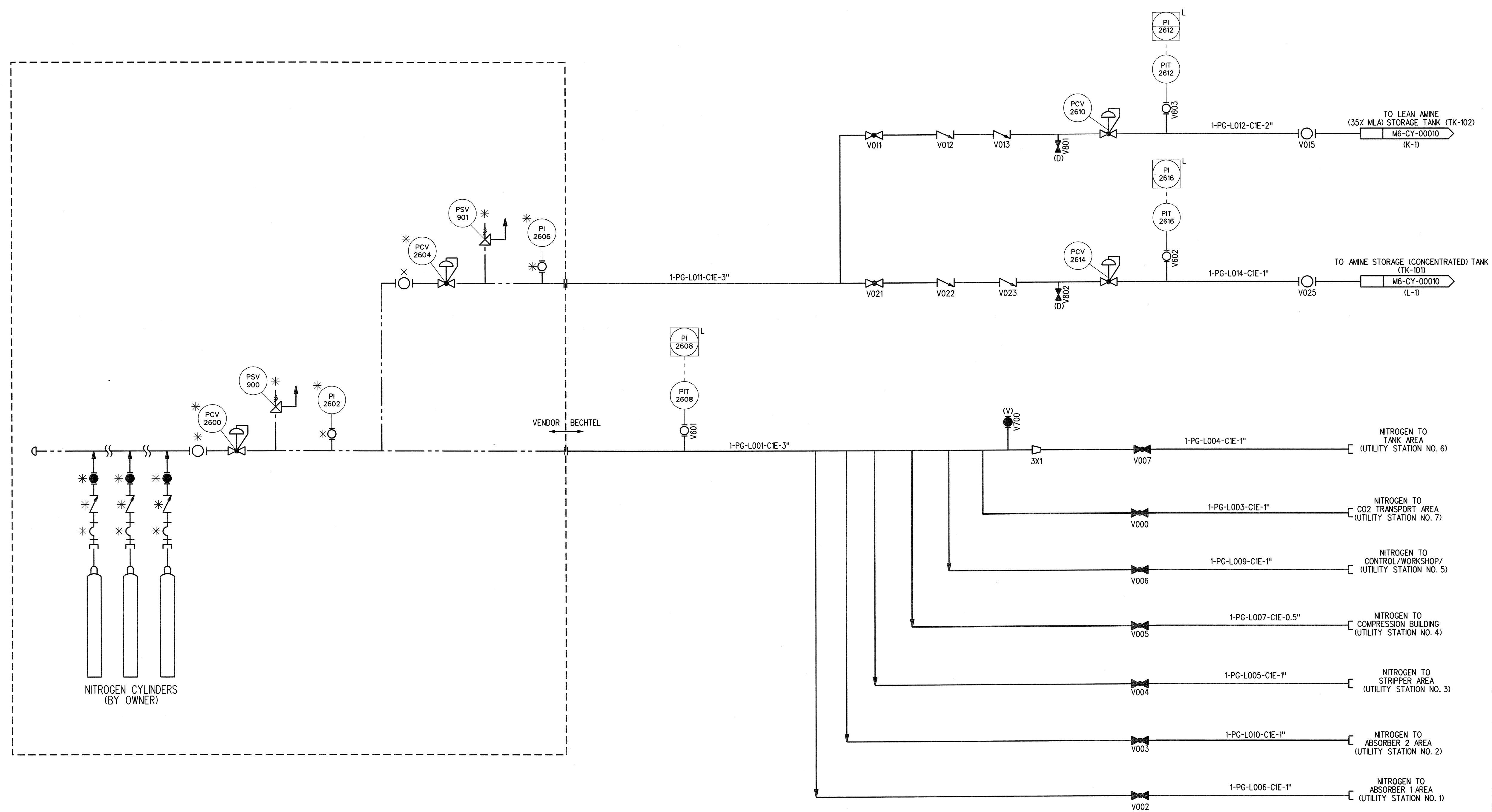


- NOTES:
1. FOR SYMBOLS AND LEGENDS SEE DRAWINGS M6J-YA-00001 THROUGH M6J-YA-00005.
  2. ALL LINES, VALVES, EQUIPMENT, AND INSTRUMENT NUMBERS ARE PREFIXED WITH "PG", UNLESS NOTED OTHERWISE.
  3. ALL VENTS, DRAINS AND INSTRUMENTATION ROOT VALVES ARE 1", UNLESS NOTED OTHERWISE.
  4. \* SYMBOL INDICATES EQUIPMENT SUPPLIED BY VENDOR.
  5. VALVES AT THIS LOCATION ARE SPRING LOADED CHECK VALVES.



Bechtel Confidential  
 BECHTEL POWER CORPORATION 2008. ALL RIGHTS RESERVED. BECHTEL CONFIDENTIAL. CONTAINS INFORMATION THAT IS CONFIDENTIAL AND PROPRIETARY TO BECHTEL AND MAY NOT BE USED, REPRODUCED OR DISCLOSED IN ANY FORM OR BY ANY MEANS WITHOUT BECHTEL'S PRIOR WRITTEN PERMISSION. THIS DOCUMENT IS PREPARED EXCLUSIVELY FOR GASSNOVA IN CONNECTION WITH THE PREPARATION OF THE FEASIBILITY STUDY FOR THE CO2 CAPTURE FACILITY AT KANITO, KOREA, AND IS NOT TO BE RELIED UPON BY OTHERS OR USED IN CONNECTION WITH ANY OTHER PROJECT.

NO.	DATE	ISSUED FOR APPROVAL	BY	CHK	MECH SUPV	ISC SUPV	PD SUPV	PROJ ENGR
1	04/16/08	ISSUED FOR APPROVAL	[Signature]	[Signature]	[Signature]	[Signature]	[Signature]	[Signature]

**BECHTEL POWER CORPORATION**  
 FREDERICK, MARYLAND

**CO2 KARSTO PROJECT**

**PIPING & INSTRUMENT DIAGRAM**  
**NITROGEN GAS SYSTEM**

OWNER DOCUMENT NUMBER	JOB NO.	DRAWING NO.	REV
10112936-PB-P-PID-0050	25474-000	M6-PG-00001	0

LEVELS 111111111 122222222 333333333 444444444 555555555 666666666  
 1 2345678901 2345678901 2345678901 2345678901 2345678901 2345678901 23

6 5 4 3 A R I 2