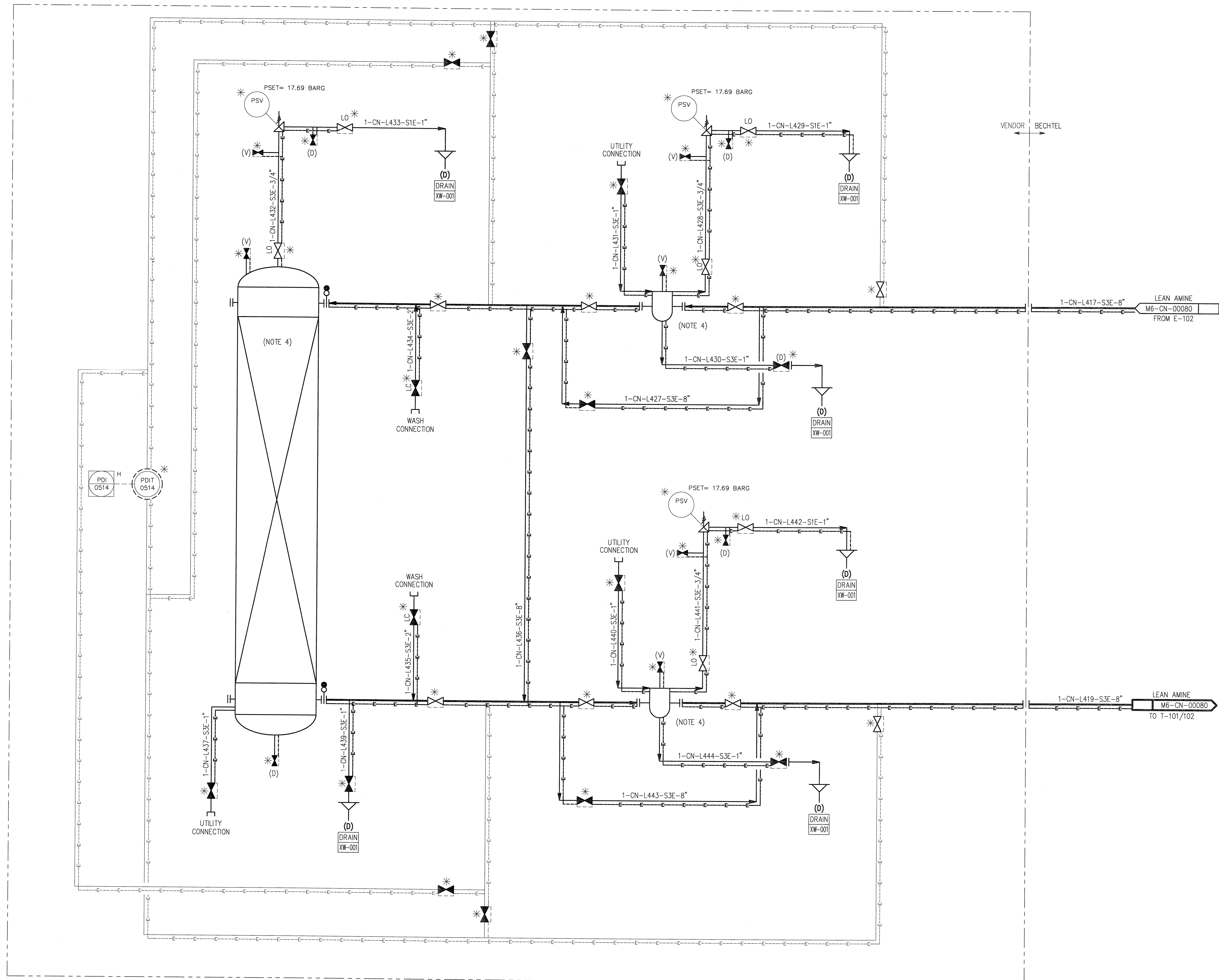


©Bechtel Corporation, 2008. All rights reserved. Bechtel, Confidential, contains information that is confidential and proprietary to Bechtel and may not be used, reproduced, or disclosed in any format without Bechtel's prior written permission. This document is prepared exclusively for Gassnova in connection with the preparation of the FEED study for the CO2 Capture Facility at Karsto, Norway, and is not to be relied upon by others or used in connection with any other project.

F-101
LEAN AMINE SIDE STREAM CARBON FILTER



- NOTES:
1. FOR SYMBOLS AND LEGENDS SEE DRAWINGS M6J-YA-00001 THROUGH M6J-YA-00005.
 2. ALL LINES, VALVES, EQUIPMENT, AND INSTRUMENT NUMBERS ARE PREFIXED WITH "CN", UNLESS NOTED OTHERWISE.
 3. ALL VENTS, DRAINS AND INSTRUMENTATION ROOT VALVES ARE 1", UNLESS NOTED OTHERWISE.
 4. EQUIPMENT TO BE HEAT TRACED.
 5. * SYMBOL INDICATES EQUIPMENT SUPPLIED BY VENDOR.

- HOLDS:
1. CONTROL VALVE(C/V) AND PRESSURE SAFETY VALVE (PSV) SIZES.
 2. PRESSURE SAFETY VALVE SET PRESSURE.

		GASSNOVA		CO2 KARSTO PROJECT	
Owner Drawing No. 10112936-PB-P-PID-0020		PIPING & INSTRUMENT DIAGRAM LEAN AMINE SYSTEM SIDE STREAM FILTERS			
Contractor BECHTEL POWER CORPORATION FREDERICK, MARYLAND		Sheet Size 594x841 "A1" Scale N.T.S.		DRAWING NO. REV.	
		JOB NO. 25474		000-M6-CN-00090 0	