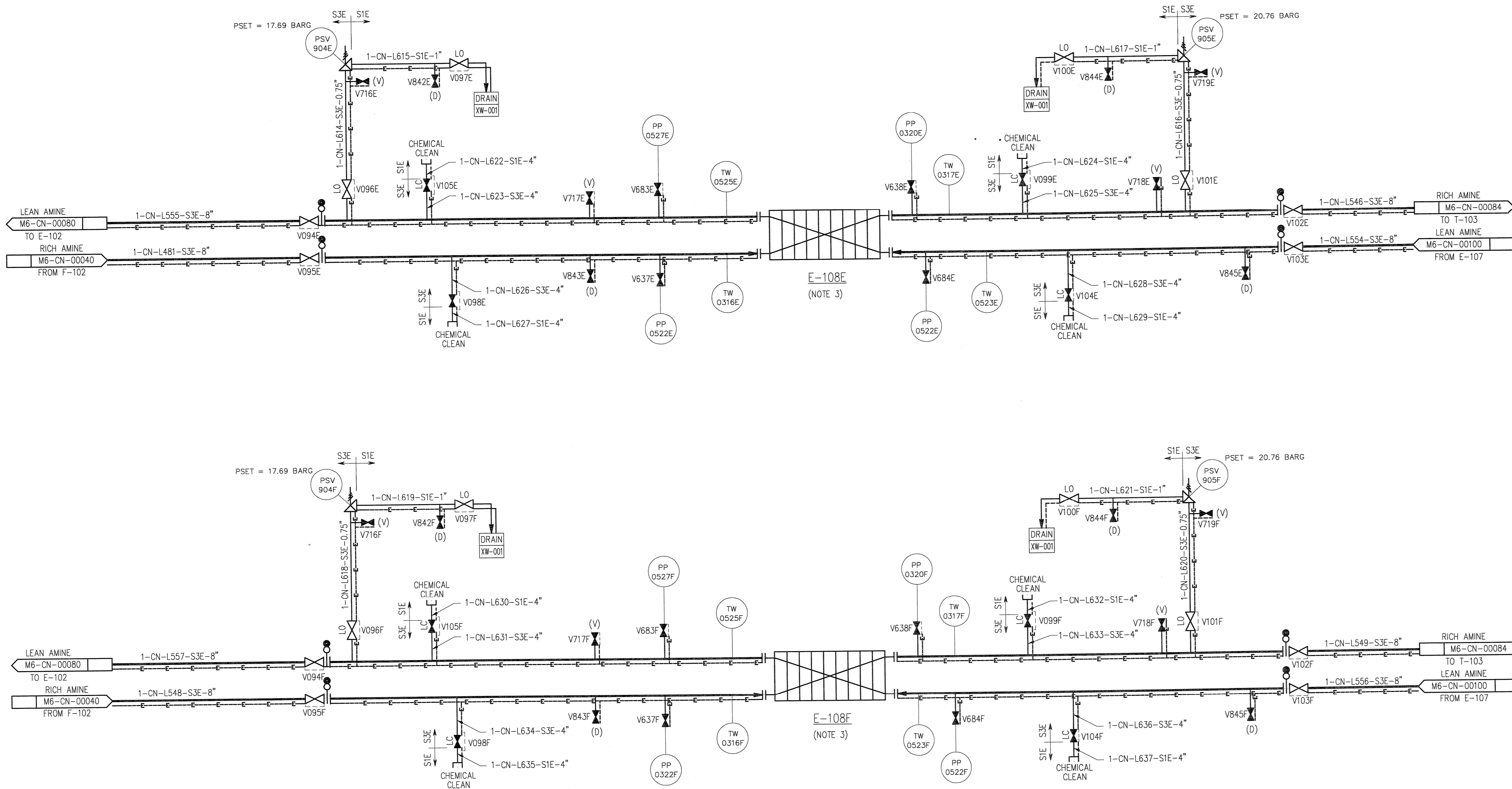


©Bechtel Corporation 2008. All rights reserved. Bechtel, Confidential. Contains information that is confidential and proprietary to Bechtel and may not be used, reproduced, or disclosed in any format without Bechtel's prior written permission. This document is prepared as proposed and is not to be relied upon by others or used in connection with any other project.

E-108E/F
 LEAN/RICH AMINE HEAT EXCHANGERS

- NOTES:
- FOR SYMBOLS AND LEGENDS SEE DRAWINGS M6J-YA-0001 THROUGH M6J-YA-0005.
 - ALL LINES, VALVES, EQUIPMENT, AND INSTRUMENT NUMBERS ARE PREFIXED WITH "CN", UNLESS NOTED OTHERWISE.
 - EQUIPMENT TO BE HEAT TRACED.

- HOLDS:
- CONTROL VALVE (C/V) AND PRESSURE SAFETY VALVES (PSV) SIZES.



	ISSUED FOR APPROVAL		AS	GR	-	RS	BR	APR
	NO.	DATE	BY	CHK	DES	ENGR	PRGR	APPR
GASSNOVA		CO2 KARSTO PROJECT						
Owner Drawing No. 10112936-PB-P-PID-0017		PIPING & INSTRUMENT DIAGRAM LEAN AMINE / RICH AMINE HEAT EXCHANGERS SHEET 3 OF 4						
		BECHTEL POWER CORPORATION FREDERICK, MARYLAND						
Sheet Size 594x841 "A1" Scale N.T.S.		JOB NO. 25474		DRAWING NO. 000-M6-CN-00083		REV. 0		