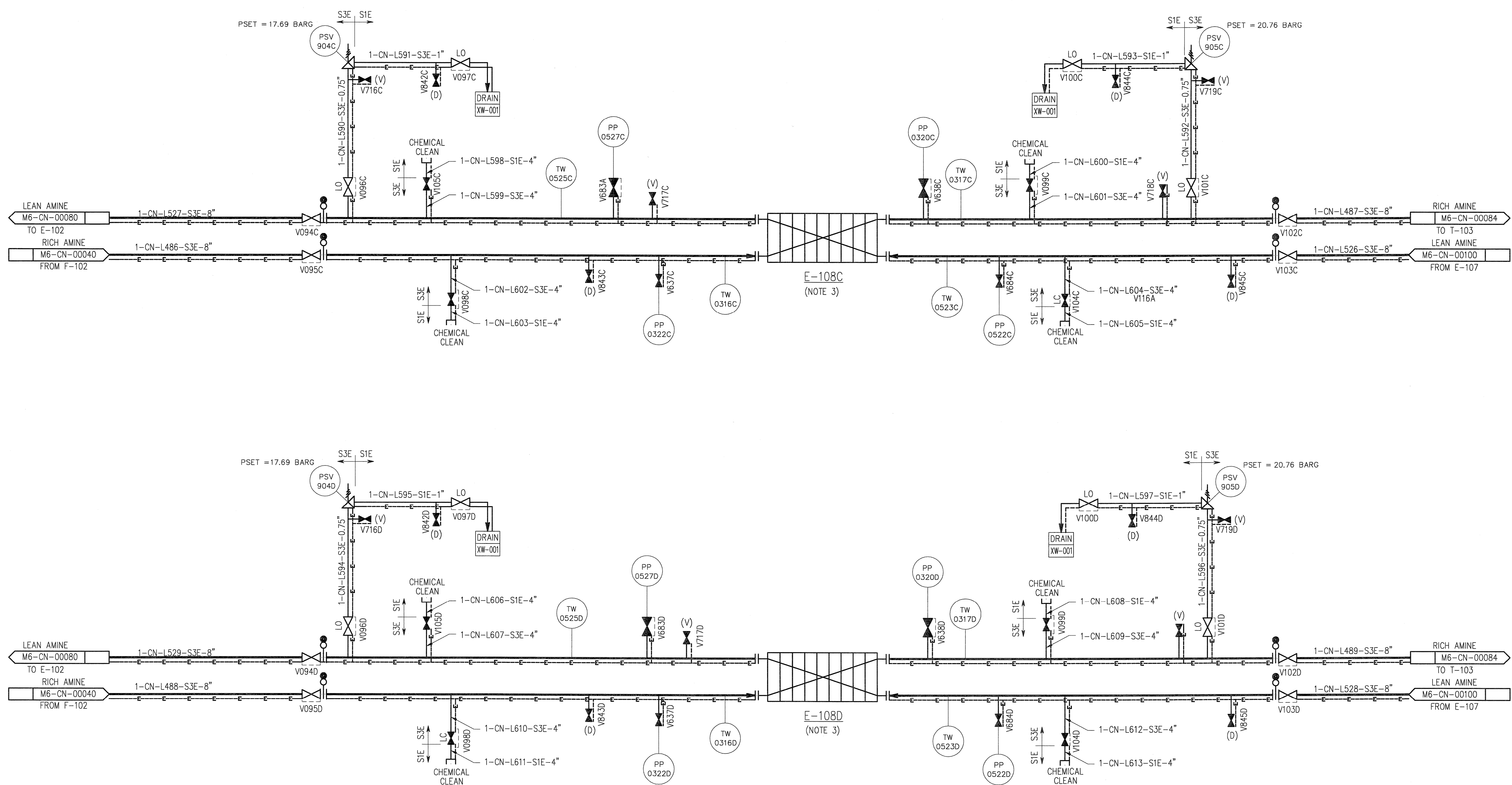


©Bechtel Corporation 2008. All rights reserved. Bechtel Confidential. Contains information that is confidential and proprietary to Bechtel and may not be used, reproduced, or disclosed in any format without Bechtel's prior written permission. This document is prepared exclusively for Gassnova in connection with the preparation of the FEED study for the CO2 Capture Facility at Karsto, Norway, and is not to be relied upon by others or in connection with any other project.

E-108C/D
LEAN/RICH AMINE HEAT EXCHANGERS



- NOTES:
- FOR SYMBOLS AND LEGENDS SEE DRAWINGS M6J-YA-00001 THROUGH M6J-YA-00005.
 - ALL LINES, VALVES, EQUIPMENT, AND INSTRUMENT NUMBERS ARE PREFIXED WITH "CN", UNLESS NOTED OTHERWISE.
 - EQUIPMENT TO BE HEAT TRACED.

- HOLDS:
- CONTROL VALVE (C/V) AND PRESSURE SAFETY VALVES (PSV) SIZES.

		CO2 KARSTO PROJECT	
Owner Drawing No. 10112936-PB-P-PID-0016		PIPING & INSTRUMENT DIAGRAM LEAN AMINE / RICH AMINE HEAT EXCHANGERS SHEET 2 OF 4	
		BECHTEL POWER CORPORATION FREDERICK, MARYLAND	
SHEET NO. 594x841 "A1"	Scale N.T.S.	JOB NO. 25474	DRAWING NO. 000-M6-CN-00082
		REV. 0	DATE