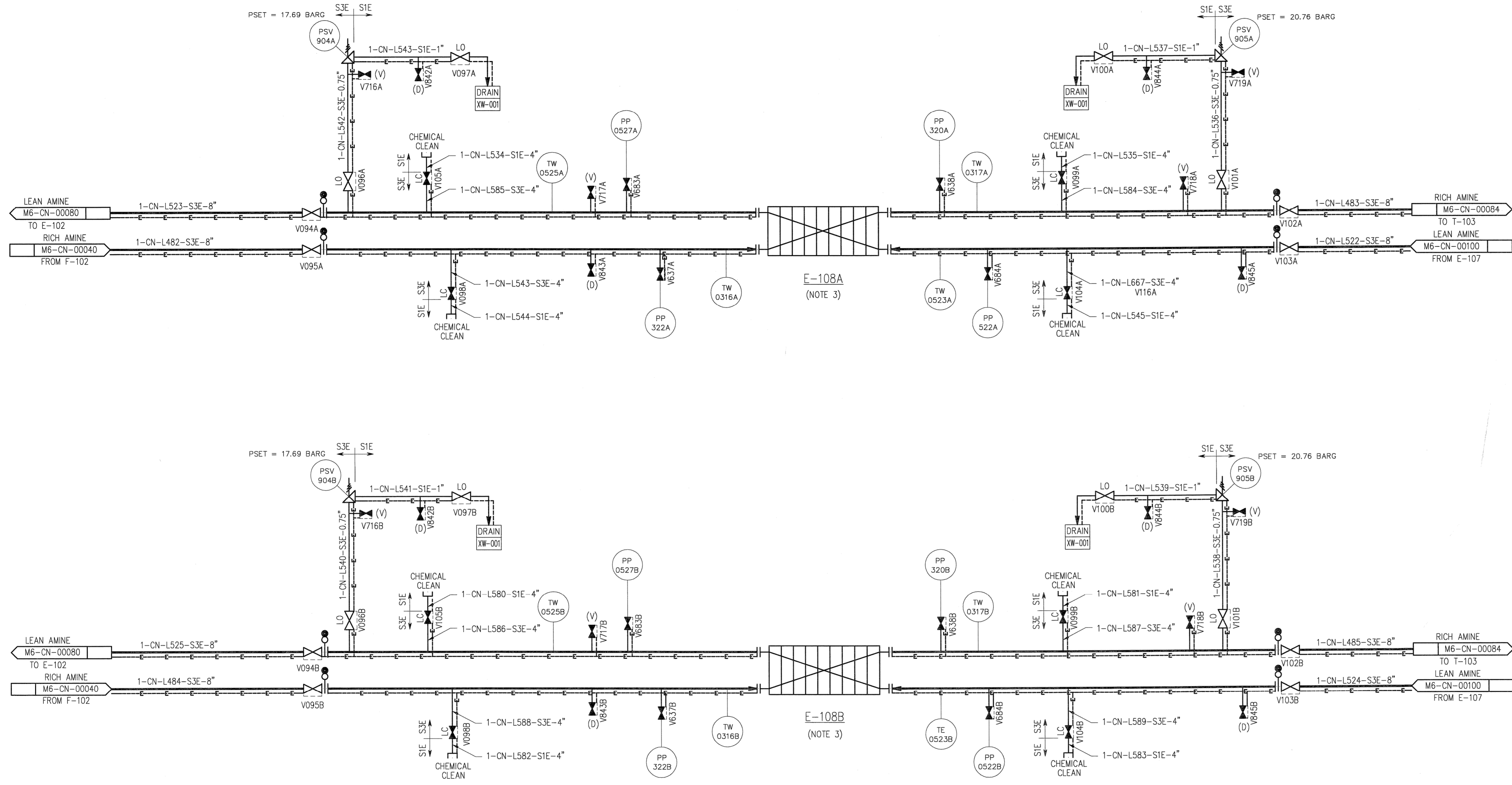


©Bechtel Corporation, 2008. All rights reserved. Bechtel Confidential. Contains information that is confidential and proprietary to Bechtel and may not be used, reproduced, or disseminated without Bechtel's prior written permission. This document is prepared exclusively for Gassnova in connection with the preparation of the CO2 Capture Facility at Karsto, Norway, and is not to be relied upon by others or used in connection with any other project.

**E-108A/B**  
 LEAN/RICH AMINE HEAT EXCHANGERS

- NOTES:
- FOR SYMBOLS AND LEGENDS SEE DRAWINGS M6J-YA-00001 THROUGH M6J-YA-00005.
  - ALL LINES, VALVES, EQUIPMENT, AND INSTRUMENT NUMBERS ARE PREFIXED WITH "CN", UNLESS NOTED OTHERWISE.
  - EQUIPMENT TO BE HEAT TRACED.

- HOLDS:
- CONTROL VALVE (C/V) AND PRESSURE SAFETY VALVES (PSV) SIZES.



	ISSUED FOR APPROVAL NO. DATE BY CHK DES ENGR PROJ APPR	
	REVISIONS	
<b>GASSNOVA</b>		<b>CO2 KARSTO PROJECT</b>
Owner Drawing No. 10112936-PB-P-PID-0015		PIPING & INSTRUMENT DIAGRAM LEAN AMINE / RICH AMINE HEAT EXCHANGERS SHEET 1 OF 4
Contractor <b>BECHTEL POWER CORPORATION</b> FREDERICK, MARYLAND		Sheet Size: 594x841 "A1" Scale: N.T.S.
JOB NO. 25474		DRAWING NO. 000-M6-CN-00081
		REV. 0