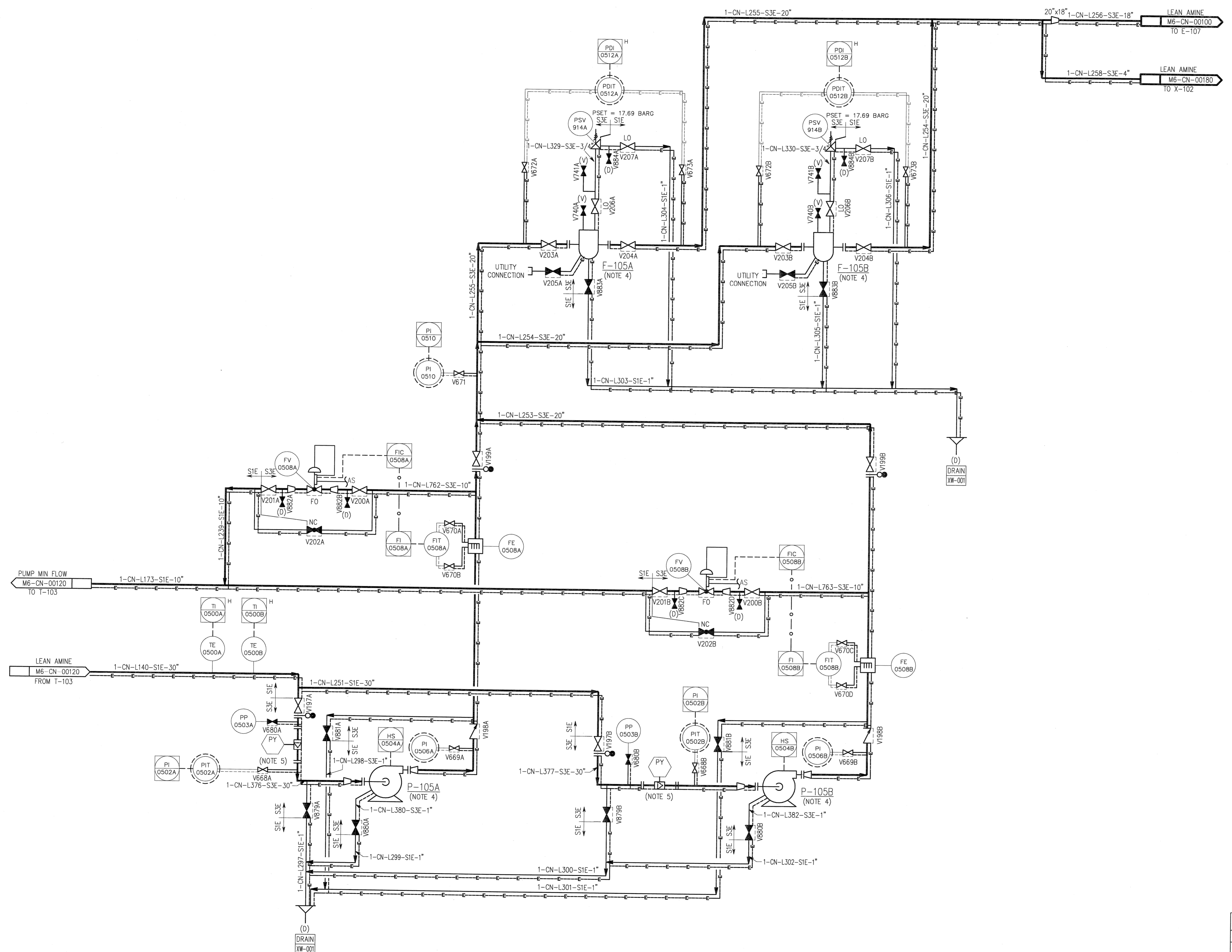


©Bechtel Corporation 2008. All rights reserved. Bechtel, Confidential. Contains information that is confidential and proprietary to Bechtel and may not be used, reproduced or disclosed in any form at any time without the prior written permission of Bechtel. This document is prepared exclusively for Gassnova in connection with the preparation of the FEED study for the CO2 capture facility at Karsto, Norway, and is not to be relied upon by others or used in connection with any other project.

F-105A/B  
LEAN AMINE MECHANICAL FILTER



- NOTES:
- FOR SYMBOLS AND LEGENDS SEE DRAWINGS M6J-YA-00001 THROUGH M6J-YA-00005.
  - ALL LINES, VALVES, EQUIPMENT, AND INSTRUMENT NUMBERS ARE PREFIXED WITH "CN", UNLESS NOTED OTHERWISE.
  - ALL VENTS, DRAINS AND INSTRUMENTATION ROOT VALVES ARE 1", UNLESS NOTED OTHERWISE.
  - EQUIPMENT TO BE HEAT TRACED.
  - STARTUP STRAINER TO BE REMOVED SUBSEQUENT TO PLANT COMMISSIONING. TO BE REPLACED BY COARSE STRAINER FOR NORMAL OPERATIONS.

- HOLDS:
- CONTROL VALVE (C/V) AND PRESSURE SAFETY VALVE (PSV) SIZES.
  - PRESSURE SAFETY VALVE SET PRESSURE.

P-105A/B  
LEAN AMINE PUMP

		<b>CO2 KARSTO PROJECT</b>	
Owner Drawing No. <b>10112936-PB-PID-0028</b>		<b>PIPING &amp; INSTRUMENT DIAGRAM LEAN AMINE PUMP</b>	
		Scale: N.T.S.	
Sheet Size: 594x841 "A1"		JOB NO. <b>000-M6-CN-00170</b>	
DRAWING NO.		REV. <b>0</b>	