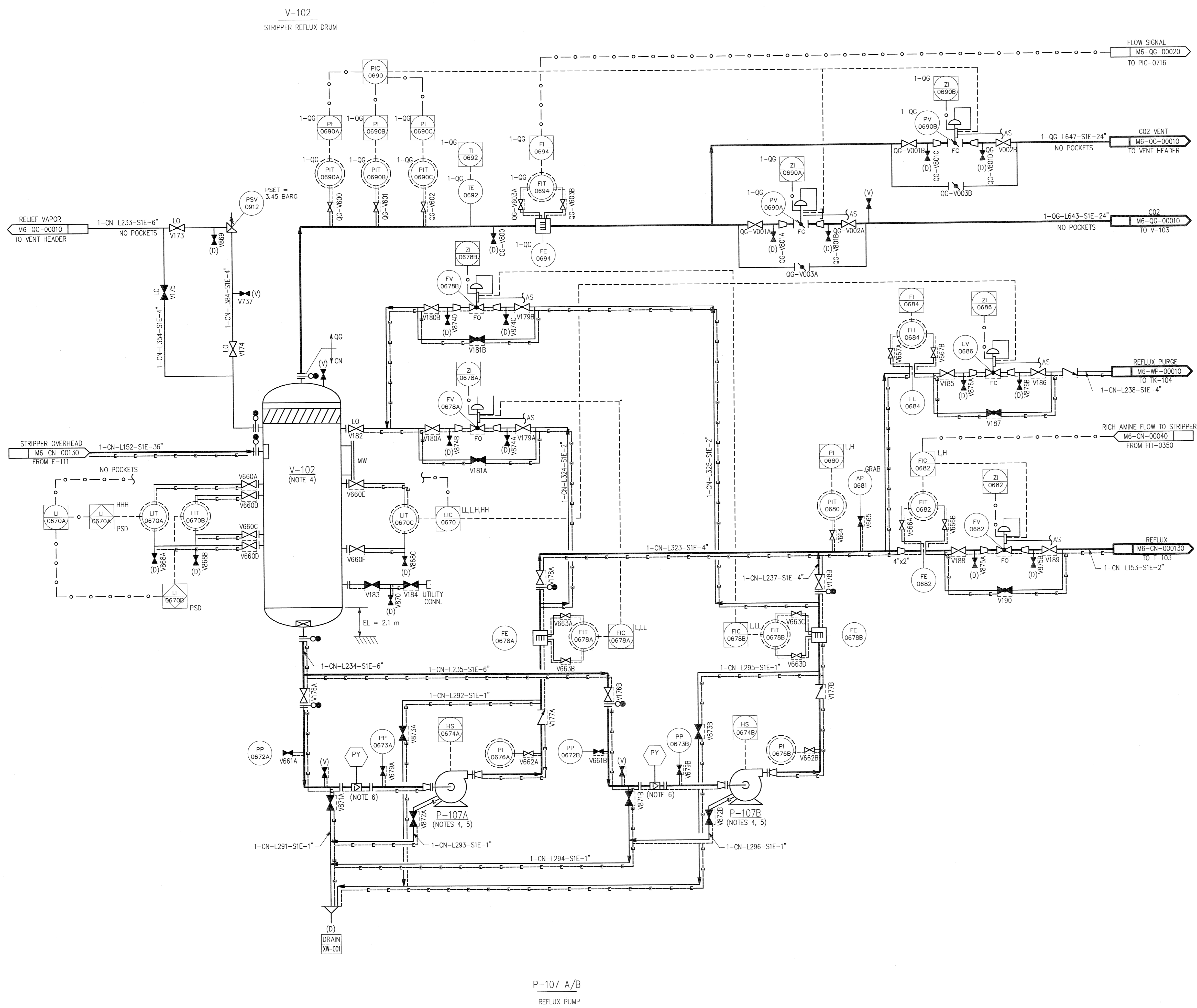


© Bechtel Corporation 2008. All rights reserved. Bechtel, Confidential, information that is confidential and proprietary to Bechtel and may not be used, reproduced, or disclosed in any format without the prior written permission of Bechtel. This information is provided exclusively for Gassnova in connection with the preparation of the FEED study for the CO2 capture facility at Karsto, Norway, and is not to be relied upon by others or used in connection with any other project.



- NOTES:
1. FOR SYMBOLS AND LEGENDS SEE DRAWINGS M6J-YA-00001 THROUGH M6J-YA-00005.
  2. ALL LINES, VALVES, EQUIPMENT, AND INSTRUMENT NUMBERS ARE PREFIXED WITH "CN", UNLESS NOTED OTHERWISE.
  3. ALL VENTS, DRAINS AND INSTRUMENTATION ROOT VALVES ARE 1", UNLESS NOTED OTHERWISE.
  4. EQUIPMENT TO BE HEAT TRACED. VESSEL UP TO HLL ONLY.
  5. PUMP SEAL FLUSHING DETAILS TO BE PREPARED LATER.
  6. STARTUP STRAINER TO BE REMOVED SUBSEQUENT TO PLANT COMMISSIONING. TO BE REPLACED BY COARSE STRAINER FOR NORMAL OPERATIONS.

- HOLDS:
1. CONTROL VALVE (C/V) AND PRESSURE SAFETY VALVE (PSV) SIZES.
  2. PRESSURE SAFETY VALVE SET PRESSURE.

P-107 A/B  
REFLUX PUMP

ISSUED FOR APPROVAL		KJ	DM	RS	APR
NO.	DATE	BY	CHK	DES	ENGR.
GASSNOVA		CO2 KARSTO PROJECT			
10112936-PB-P-PID-0025		PIPING & INSTRUMENT DIAGRAM STRIPPER REFLUX SECTION			
BECHTEL POWER CORPORATION FREDERICK, MARYLAND		Sheet Size 594x841 "A1"	Scale N.T.S.		
JOB NO. 25474		DRAWING NO. 000-M6-CN-00140		REV. 0	