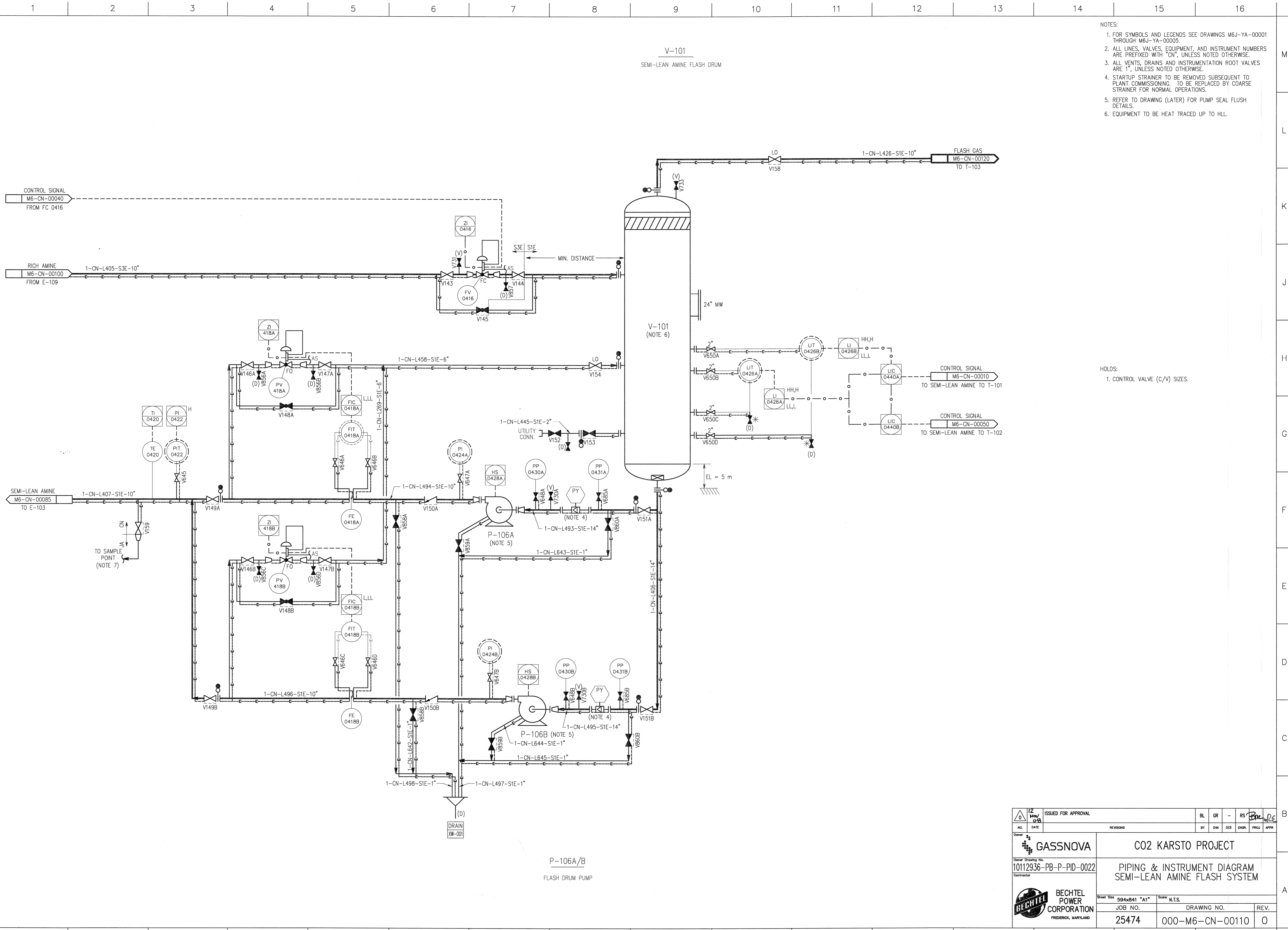


©Bechtel Corporation 2008. All rights reserved. Bechtel Confidential. Contains information that is confidential and proprietary to Bechtel and may not be used, reproduced, or disclosed in any format without Bechtel's prior written permission. This document is prepared exclusively for Gassnova in connection with the preparation of the FEED study for the CO2 Capture Facility at Karsto, Norway, and is not to be relied upon by others or used in connection with any other project.



- NOTES:
- FOR SYMBOLS AND LEGENDS SEE DRAWINGS M6J-YA-00001 THROUGH M6J-YA-00005.
  - ALL LINES, VALVES, EQUIPMENT, AND INSTRUMENT NUMBERS ARE PREFIXED WITH "CN", UNLESS NOTED OTHERWISE.
  - ALL VENTS, DRAINS AND INSTRUMENTATION ROOT VALVES ARE 1", UNLESS NOTED OTHERWISE.
  - STARTUP STRAINER TO BE REMOVED SUBSEQUENT TO PLANT COMMISSIONING. TO BE REPLACED BY COARSE STRAINER FOR NORMAL OPERATIONS.
  - REFER TO DRAWING (LATER) FOR PUMP SEAL FLUSH DETAILS.
  - EQUIPMENT TO BE HEAT TRACED UP TO HLL.

HOLDS:  
1. CONTROL VALVE (C/V) SIZES.

P-106A/B  
FLASH DRUM PUMP

		<b>CO2 KARSTO PROJECT</b>	
Owner Drawing No. 10112936-PB-P-PID-0022		<b>PIPING &amp; INSTRUMENT DIAGRAM SEMI-LEAN AMINE FLASH SYSTEM</b>	
		Sheet Size 594x841 "A1"	Scale N.T.S.
JOB NO. 25474	DRAWING NO. 000-M6-CN-00110	REV. 0	