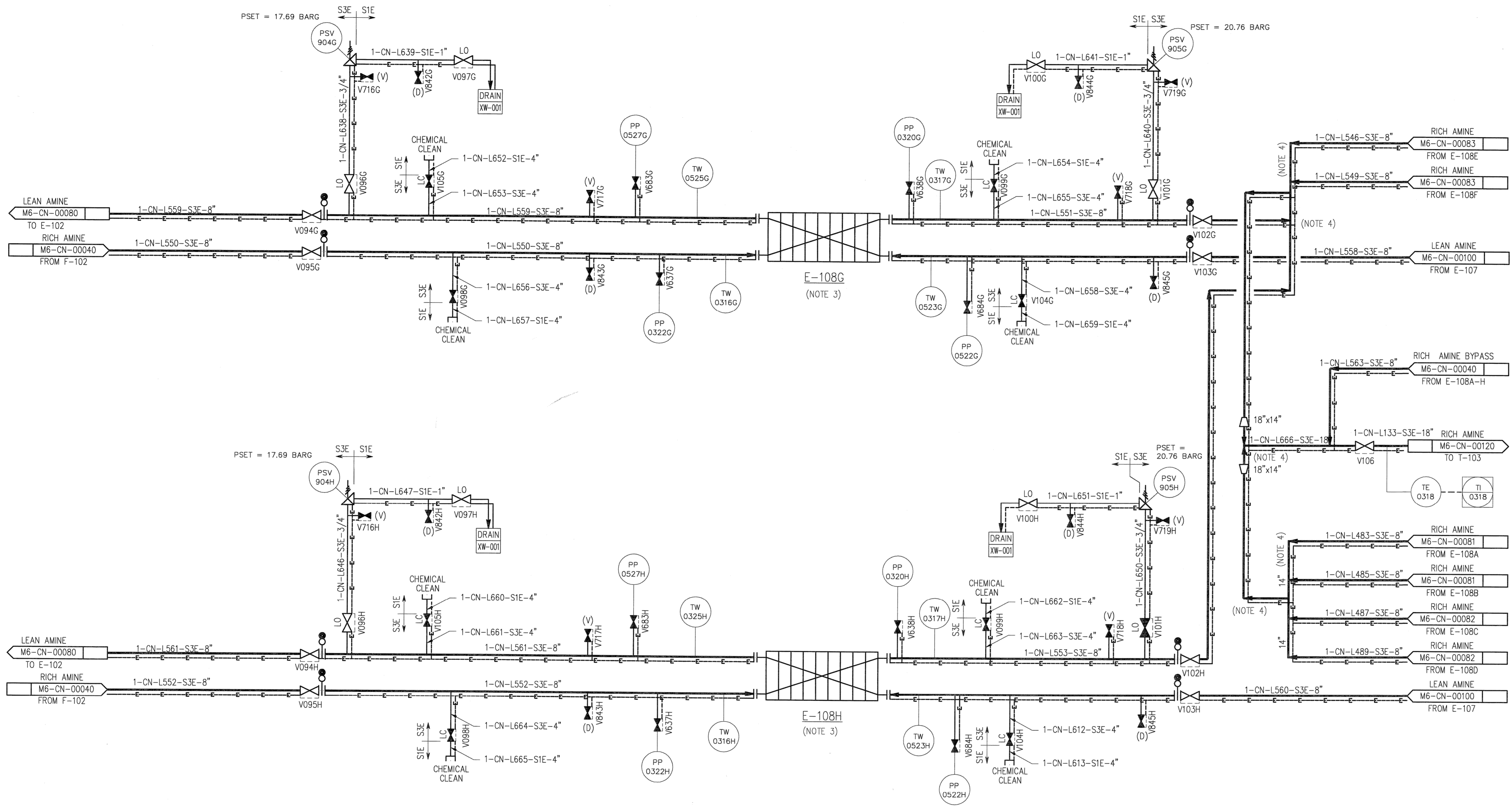


© Bechtel Corporation 2008. All rights reserved. Bechtel Confidential. Contains information that is confidential and proprietary to Bechtel and may not be used, reproduced, or disclosed in any format without Bechtel's prior written permission. This document is prepared exclusively for Gassnova in connection with the preparation of the FEED study for the CO2 Capture Facility at Karsto, Norway, and is not to be relied upon by others or used in connection with any other project.

E-108G/H
 LEAN/RICH AMINE HEAT EXCHANGERS

- NOTES:
- FOR SYMBOLS AND LEGENDS SEE DRAWINGS M6J-YA-00001 THROUGH M6J-YA-00005.
 - ALL LINES, VALVES, EQUIPMENT, AND INSTRUMENT NUMBERS ARE PREFIXED WITH "CN", UNLESS NOTED OTHERWISE.
 - EQUIPMENT TO BE HEAT TRACED.
 - PIPING TO E-108A-H TO BE SYMMETRICAL TO ALLOW EQUAL FLOW DISTRIBUTION TO E-108A-H.



- HOLDS:
- CONTROL VALVE (C/V) AND PRESSURE SAFETY VALVES (PSV) SIZES.

ISSUED FOR APPROVAL 12 NOV 08		AS	GR	-	RS	BR	PS				
NO.	DATE	REVISIONS				BY	CHK	DES	ENGR.	PROJ	APPR
Owner Drawing No. 10112936-PB-P-PID-0018		GASSNOVA CO2 KARSTO PROJECT									
Contractor BECHTEL POWER CORPORATION FREDERICK, MARYLAND		PIPING & INSTRUMENT DIAGRAM LEAN AMINE / RICH AMINE HEAT EXCHANGERS SHEET 4 OF 4									
Sheet Size	594x841 "A1"	Scale	N.T.S.								
JOB NO.	25474	DRAWING NO.	000-M6-CN-00084								
REV.	0										