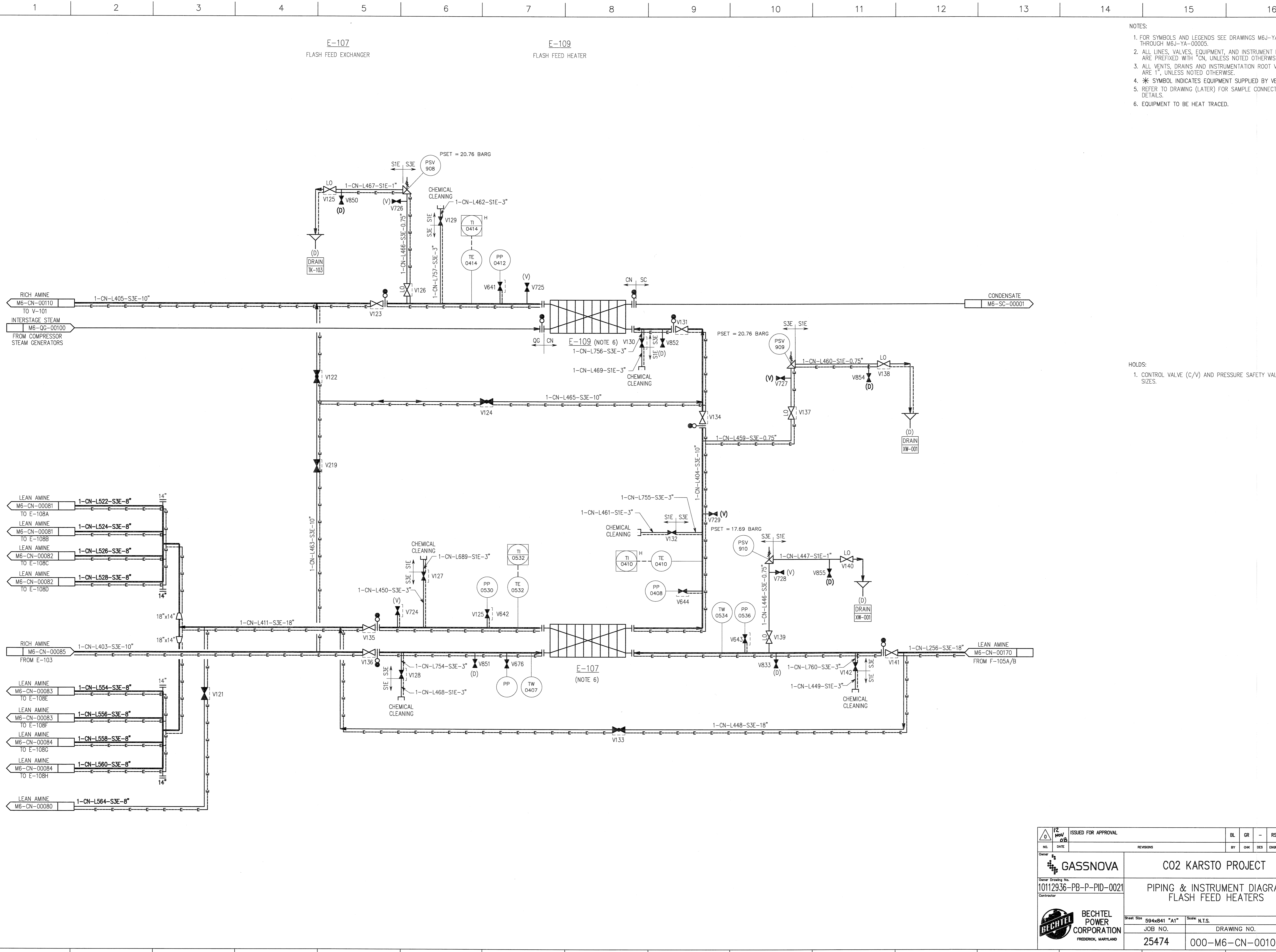


©Bechtel Corporation 2008. All rights reserved. Bechtel Confidential. Contains information that is confidential and proprietary to Bechtel and may not be used, reproduced or disclosed in any format without Bechtel's prior written permission. This document is prepared exclusively for Gassnova in connection with the preparation of the FEED study for the CO2 Capture Facility at Karsto, Norway, and is not to be relied upon by others or used in connection with any other project.



- NOTES:
1. FOR SYMBOLS AND LEGENDS SEE DRAWINGS M6J-YA-00001 THROUGH M6J-YA-00005.
 2. ALL LINES, VALVES, EQUIPMENT, AND INSTRUMENT NUMBERS ARE PREFIXED WITH "CN", UNLESS NOTED OTHERWISE.
 3. ALL VENTS, DRAINS AND INSTRUMENTATION ROOT VALVES ARE 1", UNLESS NOTED OTHERWISE.
 4. * SYMBOL INDICATES EQUIPMENT SUPPLIED BY VENDOR.
 5. REFER TO DRAWING (LATER) FOR SAMPLE CONNECTION DETAILS.
 6. EQUIPMENT TO BE HEAT TRACED.

HOLDS:

1. CONTROL VALVE (C/V) AND PRESSURE SAFETY VALVE (PSV) SIZES.

		GASSNOVA CO2 KARSTO PROJECT	
Owner Drawing No. 10112936-PB-P-PID-0021		PIPING & INSTRUMENT DIAGRAM FLASH FEED HEATERS	
		BECHTEL POWER CORPORATION FREDERICK, MARYLAND	
SHEET NO. 25474	JOB NO. 000-M6-CN-00100	DRAWING NO. 0	REV. 0