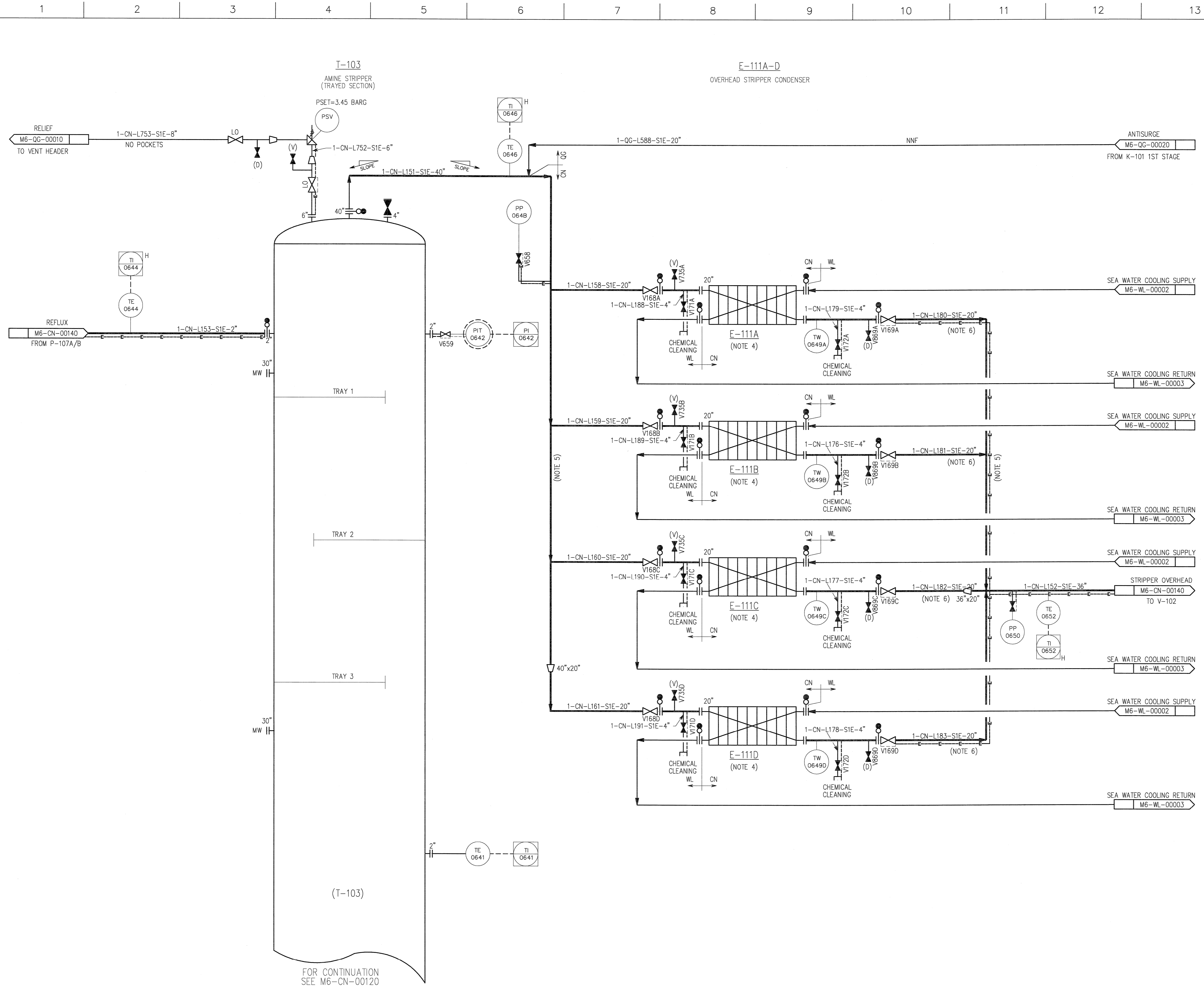


©Bechtel Corporation 2008. All rights reserved. Bechtel Confidential. Proprietary information that is confidential and proprietary to Bechtel and may not be used, reproduced or disclosed in any format without Bechtel's prior written permission. This document is prepared for the CO2 Capture Facility at Karsto, Norway, and is not to be relied upon by others or used in connection with any other project.



- NOTES:
1. FOR SYMBOLS AND LEGENDS SEE DRAWINGS M6J-YA-00001 THROUGH M6J-YA-00005.
 2. ALL LINES, VALVES, EQUIPMENT, AND INSTRUMENT NUMBERS ARE PREFIXED WITH "CN", UNLESS NOTED OTHERWISE.
 3. ALL VENTS, DRAINS AND INSTRUMENTATION ROOT VALVES ARE "1", UNLESS NOTED OTHERWISE.
 4. EQUIPMENT TO BE HEAT TRACED.
 5. SYMMETRICAL PIPING - NO POCKETS.
 6. 2 PHASE FLOW - NO POCKETS.

FOR CONTINUATION SEE M6-CN-00120

		GASSNOVA		CO2 KARSTO PROJECT	
Owner Drawing No. 10112936-PB-P-PID-0024		PIPING & INSTRUMENT DIAGRAM AMINE STRIPPER (TRAYED SECTION)			
		BECHTEL POWER CORPORATION FREDERICK, MARYLAND		Sheet Size: 594x841 "A1" Scale: N.T.S.	
Job No. 25474		Drawing No. 000-M6-CN-00130		Rev. 0	