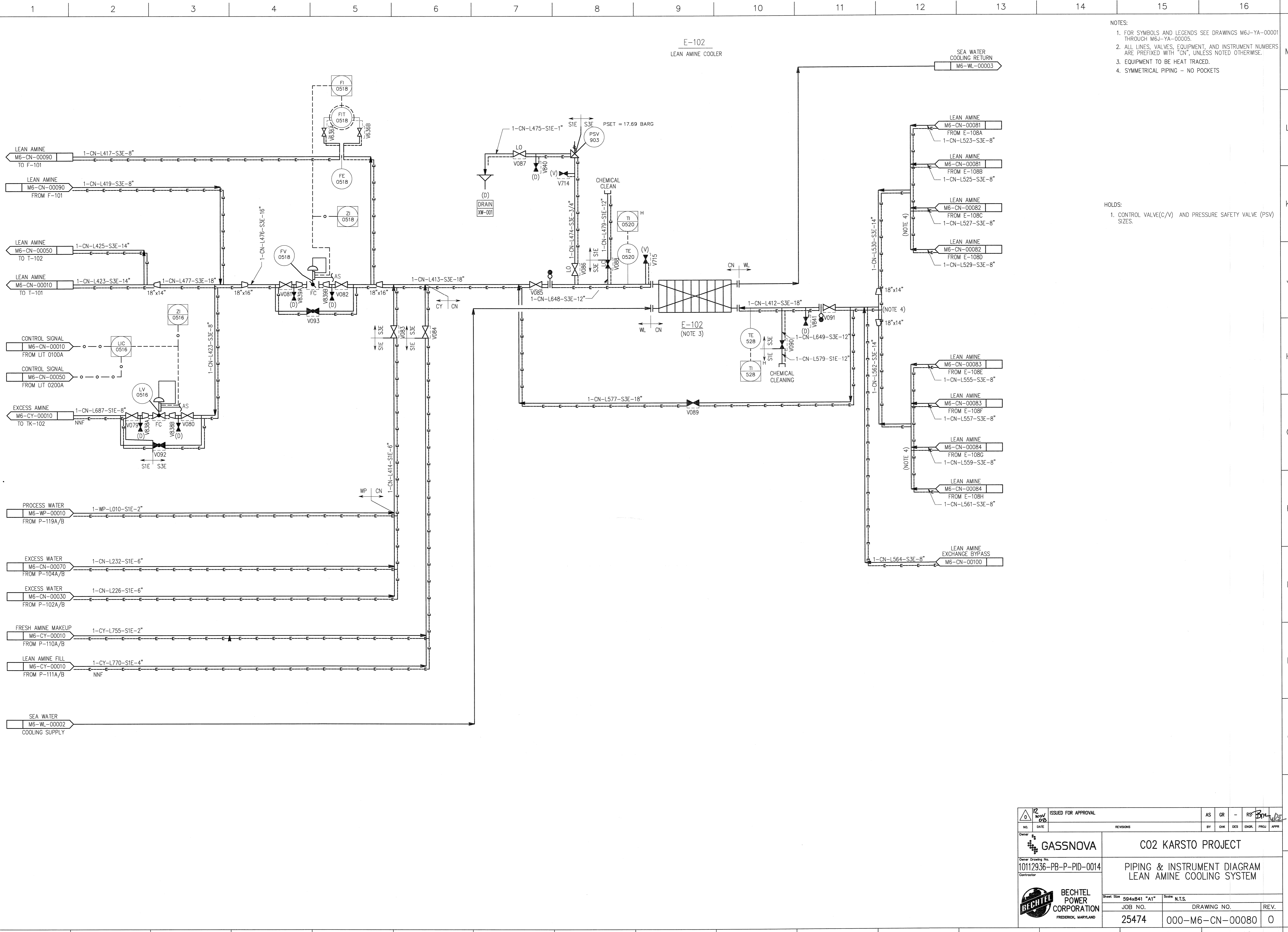


©Bechtel Corporation 2008. All rights reserved. Bechtel Confidential. Contains information that is confidential and proprietary to Bechtel and may not be used, reproduced or disclosed in any form without Bechtel's prior written permission. This document is prepared exclusively for Gassnova in connection with the preparation of the FEED study for the CO2 Capture Facility at Karsto, Norway, and is not to be relied upon by others or used in connection with any other project.



- NOTES:
- FOR SYMBOLS AND LEGENDS SEE DRAWINGS M6J-YA-00001 THROUGH M6J-YA-00005.
  - ALL LINES, VALVES, EQUIPMENT, AND INSTRUMENT NUMBERS ARE PREFIXED WITH "CN", UNLESS NOTED OTHERWISE.
  - EQUIPMENT TO BE HEAT TRACED.
  - SYMMETRICAL PIPING - NO POCKETS

- HOLDS:
- CONTROL VALVE(C/V) AND PRESSURE SAFETY VALVE (PSV) SIZES.

		<b>GASSNOVA</b>		<b>CO2 KARSTO PROJECT</b>	
Owner Drawing No. 10112936-PB-P-PID-0014		PIPING & INSTRUMENT DIAGRAM LEAN AMINE COOLING SYSTEM			
		<b>BECHTEL POWER CORPORATION</b> FREDERICK, MARYLAND		Sheet Size 594x841 "A1" Scale N.T.S.	
JOB NO. 25474		DRAWING NO. 000-M6-CN-00080		REV. 0	