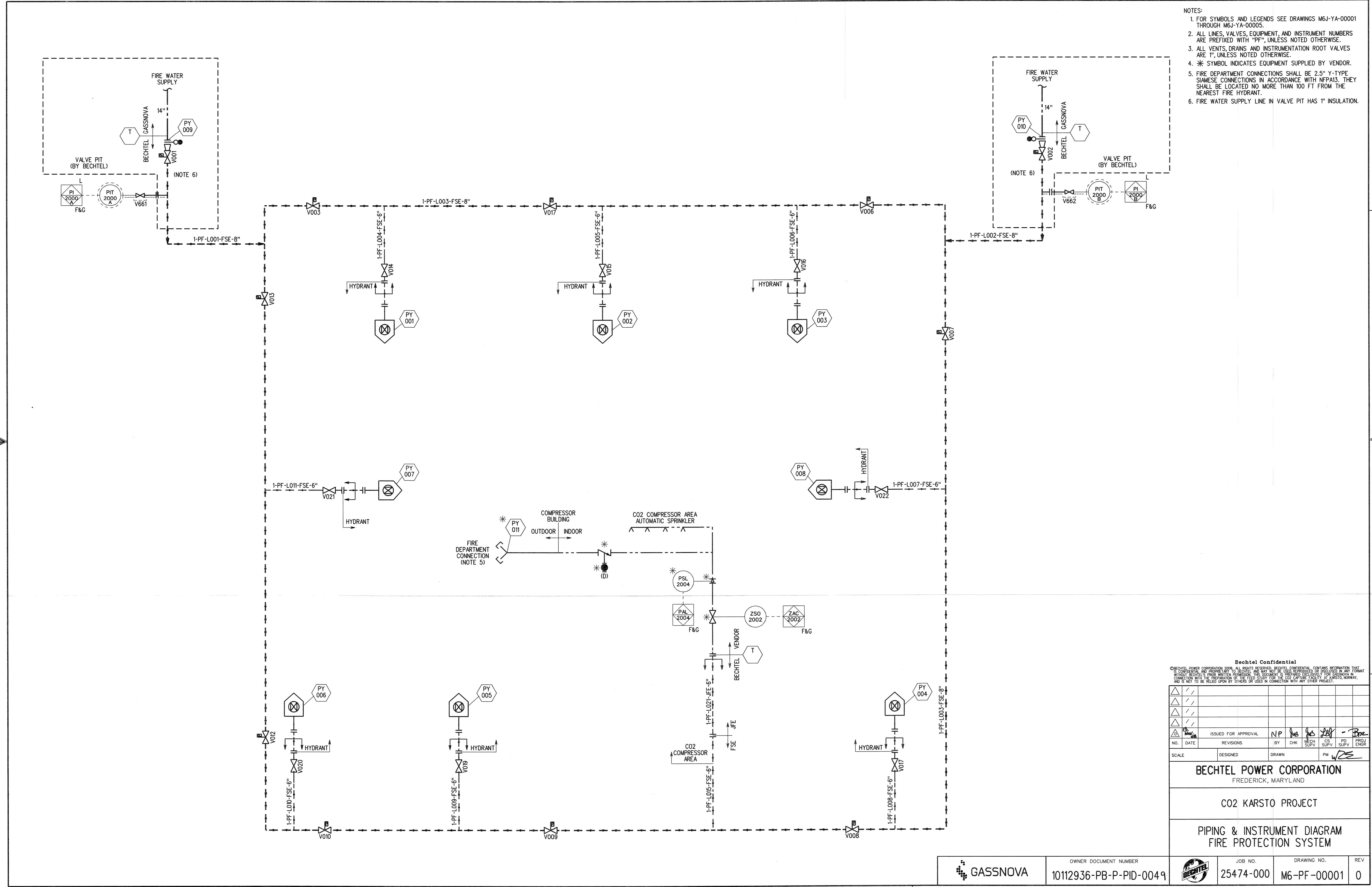


- NOTES:
1. FOR SYMBOLS AND LEGENDS SEE DRAWINGS M6J-YA-0001 THROUGH M6J-YA-0005.
 2. ALL LINES, VALVES, EQUIPMENT, AND INSTRUMENT NUMBERS ARE PREFIXED WITH "PF", UNLESS NOTED OTHERWISE.
 3. ALL VENTS, DRAINS AND INSTRUMENTATION ROOT VALVES ARE 1", UNLESS NOTED OTHERWISE.
 4. * SYMBOL INDICATES EQUIPMENT SUPPLIED BY VENDOR.
 5. FIRE DEPARTMENT CONNECTIONS SHALL BE 2.5" Y-TYPE SIAMOSE CONNECTIONS IN ACCORDANCE WITH NFPA13. THEY SHALL BE LOCATED NO MORE THAN 100 FT FROM THE NEAREST FIRE HYDRANT.
 6. FIRE WATER SUPPLY LINE IN VALVE PIT HAS 1" INSULATION.



Bechtel Confidential
 BECHTEL POWER CORPORATION 2004. ALL RIGHTS RESERVED. BECHTEL CONFIDENTIAL. CONTAINS INFORMATION THAT IS CONFIDENTIAL AND PROPRIETARY TO BECHTEL AND MAY NOT BE USED, REPRODUCED OR DISCLOSED IN ANY FORM WITHOUT BECHTEL'S PRIOR WRITTEN PERMISSION. THIS DOCUMENT IS PREPARED EXCLUSIVELY FOR GASSNOVA IN CONNECTION WITH THE PREPARATION OF THE FEED STUDY FOR THE CO2 CAPTURE FACILITY AT AMSTOL WORKWAY, AND IS NOT TO BE RELIED UPON BY OTHERS OR USED IN CONNECTION WITH ANY OTHER PROJECT.

NO.	DATE	ISSUED FOR APPROVAL	BY	CHK	MECH SUPV	CS SUPV	PD SUPV	PROJ ENGR
		ISSUED FOR APPROVAL	NP	WJ	KS	204		Bre
SCALE		DESIGNED	DRAWN	PM				

BECHTEL POWER CORPORATION
 FREDERICK, MARYLAND

CO2 KARSTO PROJECT

**PIPING & INSTRUMENT DIAGRAM
 FIRE PROTECTION SYSTEM**

GASSNOVA	OWNER DOCUMENT NUMBER 10112936-PB-P-PID-0049	JOB NO. 25474-000	DRAWING NO. M6-PF-00001	REV 0
----------	---	----------------------	----------------------------	----------

LEVELS 1 2 3 4 5 6 7 8 9 10 11 12 13 14 15 16 17 18 19 20 21 22 23 24 25 26 27 28 29 30 31 32 33 34 35 36 37 38 39 40 41 42 43 44 45 46 47 48 49 50 51 52 53 54 55 56 57 58 59 60 61 62 63 64 65 66 67 68 69 70 71 72 73 74 75 76 77 78 79 80 81 82 83 84 85 86 87 88 89 90 91 92 93 94 95 96 97 98 99 100