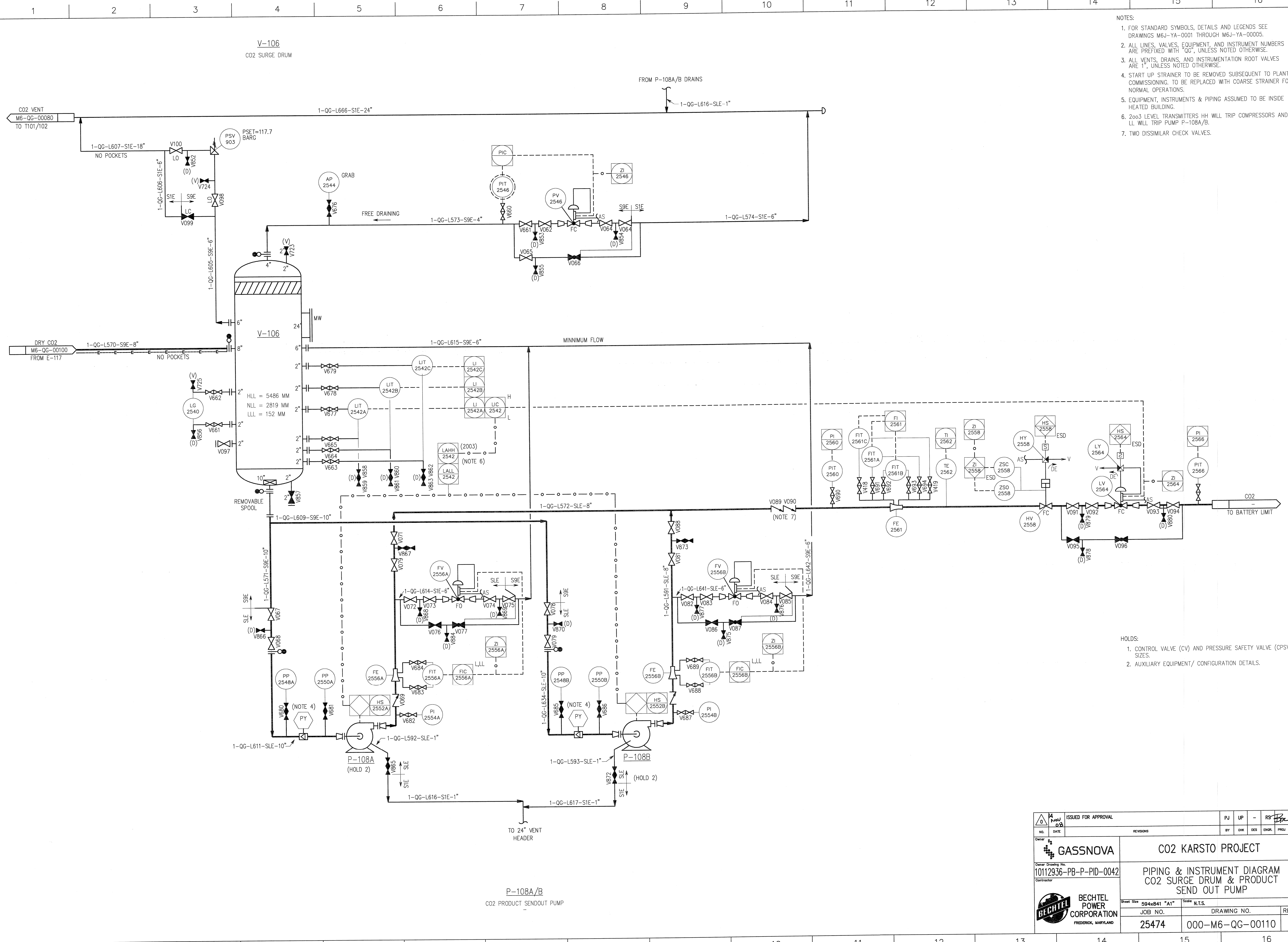


©Bechtel Corporation 2008. All rights reserved. Bechtel, Confidential. Contains information that is confidential and proprietary to Bechtel and may not be used, reproduced, or disclosed in any format without Bechtel's prior written permission. This document is prepared exclusively for the use of the project.



- NOTES:
- FOR STANDARD SYMBOLS, DETAILS AND LEGENDS SEE DRAWINGS M6J-YA-0001 THROUGH M6J-YA-00005.
  - ALL LINES, VALVES, EQUIPMENT, AND INSTRUMENT NUMBERS ARE PREFIXED WITH "QG", UNLESS NOTED OTHERWISE.
  - ALL VENTS, DRAINS, AND INSTRUMENTATION ROOT VALVES ARE 1", UNLESS NOTED OTHERWISE.
  - START UP STRAINER TO BE REMOVED SUBSEQUENT TO PLANT COMMISSIONING. TO BE REPLACED WITH COARSE STRAINER FOR NORMAL OPERATIONS.
  - EQUIPMENT, INSTRUMENTS & PIPING ASSUMED TO BE INSIDE HEATED BUILDING.
  - 2oo3 LEVEL TRANSMITTERS HH WILL TRIP COMPRESSORS AND LL WILL TRIP PUMP P-108A/B.
  - TWO DISSIMILAR CHECK VALVES.

- HOLDS:
- CONTROL VALVE (CV) AND PRESSURE SAFETY VALVE (CPSV) SIZES.
  - AUXILIARY EQUIPMENT/ CONFIGURATION DETAILS.

ISSUED FOR APPROVAL		PJ	UP	RS
NO.	DATE	BY	CHK	ENGR.
GASSNOVA		CO2 KARSTO PROJECT		
10112936-PB-P-PID-0042		PIPING & INSTRUMENT DIAGRAM CO2 SURGE DRUM & PRODUCT SEND OUT PUMP		
BECHTEL CORPORATION		REV. 0		
25474		000-M6-QG-00110		