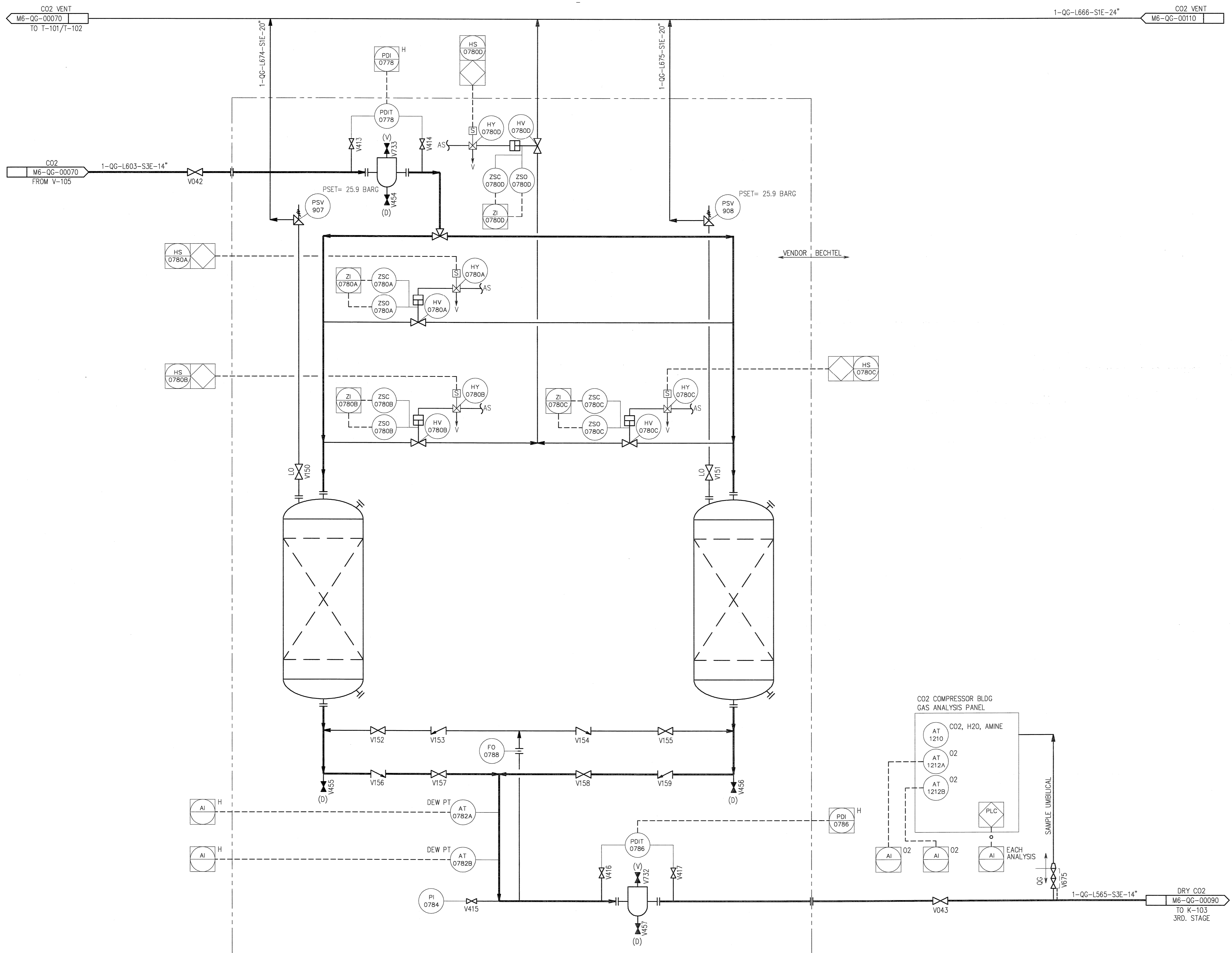


©Bechtel Corporation 2008. All rights reserved. Bechtel Confidential. Contains information that is confidential and proprietary to Bechtel and may not be used, reproduced or disclosed in any format without Bechtel's prior written permission. This document is prepared exclusively for Gassnova in connection with the preparation of the FEED study for the CO2 Capture Facility at Karsto, Norway, and is not to be relied upon by others or used in connection with any other project.

X-104 (HOLD 1)
 CO2 DRYING PACKAGE

- NOTES:
1. FOR STANDARD SYMBOLS, DETAILS AND LEGENDS SEE DRAWINGS M6J-YA-00001 THROUGH M6J-YA-00005.
 2. ALL LINES, VALVES, EQUIPMENT AND INSTRUMENT NUMBERS ARE PREFIXED WITH "QG", UNLESS NOTED OTHERWISE.
 3. ALL VENTS, DRAINS AND INSTRUMENTATION ROOT VALVES ARE 1", UNLESS NOTED OTHERWISE.
 4. EQUIPMENTS, INSTRUMENTS AND PIPING ASSUMED TO BE INSIDE HEATED BUILDING.



- HOLDS:
1. EQUIPMENT VENDOR INFORMATION.
 2. PRESSURE SAFETY VALVE (PSV) SET PRESSURE.

		CO2 KARSTO PROJECT	
Owner Drawing No. 10112936-PB-P-PID-0039		PIPING & INSTRUMENT DIAGRAM CO2 DRYING PACKAGE	
		Sheet Size 594x841 "A1"	Scale N.T.S.
JOB NO. 25474	DRAWING NO. 000-M6-QG-00080	REV. 0	