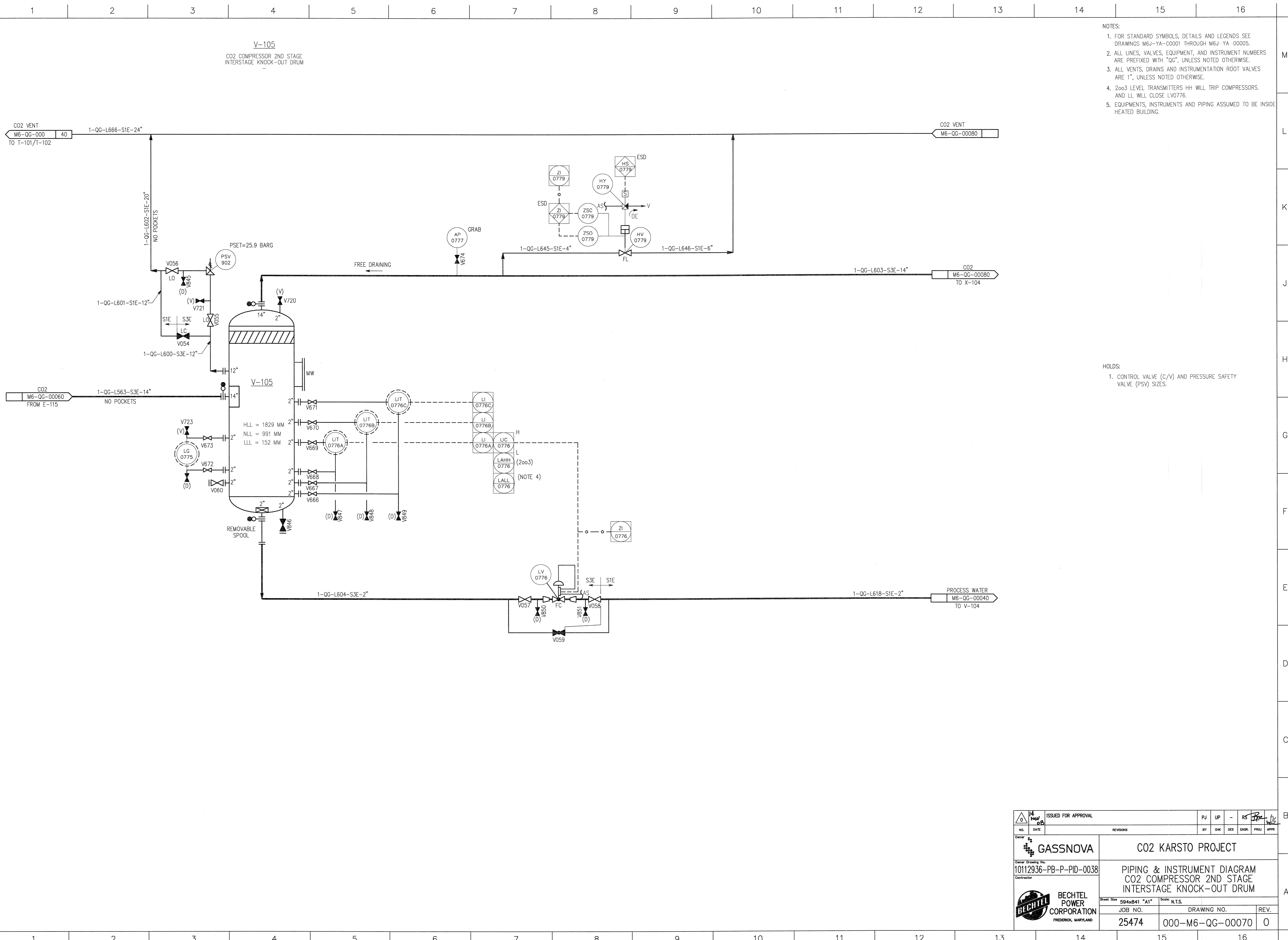


©Bechtel Corporation 2008. All rights reserved. Bechtel Confidential. Contains information that is confidential and proprietary to Bechtel and may not be used, reproduced or disclosed in any format without Bechtel's prior written permission. This document is prepared exclusively for Gassnova in connection with the preparation of the FEED study for the CO2 Capture Facility at Karsto, Norway, and is not to be relied upon by others or used in connection with any other project.



- NOTES:
- FOR STANDARD SYMBOLS, DETAILS AND LEGENDS SEE DRAWINGS M6J-YA-C0001 THROUGH M6J-YA-00005.
 - ALL LINES, VALVES, EQUIPMENT, AND INSTRUMENT NUMBERS ARE PREFIXED WITH "QG", UNLESS NOTED OTHERWISE.
 - ALL VENTS, DRAINS AND INSTRUMENTATION ROOT VALVES ARE 1", UNLESS NOTED OTHERWISE.
 - 2003 LEVEL TRANSMITTERS HH WILL TRIP COMPRESSORS. AND LL WILL CLOSE LV0776.
 - EQUIPMENTS, INSTRUMENTS AND PIPING ASSUMED TO BE INSIDE HEATED BUILDING.

- HOLDS:
- CONTROL VALVE (C/V) AND PRESSURE SAFETY VALVE (PSV) SIZES.

ISSUED FOR APPROVAL		PJ	UP	-	RS	APR
NO.	DATE	BY	CHK	DES	ENGR.	PROJ. APPR.
GASSNOVA		CO2 KARSTO PROJECT				
Owner Drawing No. 10112936-PB-P-PID-0038		PIPING & INSTRUMENT DIAGRAM CO2 COMPRESSOR 2ND STAGE INTERSTAGE KNOCK-OUT DRUM				
BECHTEL POWER CORPORATION FREDERICK, MARYLAND		Sheet Size 594x841 "A1"	Scale N.T.S.	DRAWING NO. 000-M6-QG-00070		
JOB NO. 25474		REV. 0		REV.		