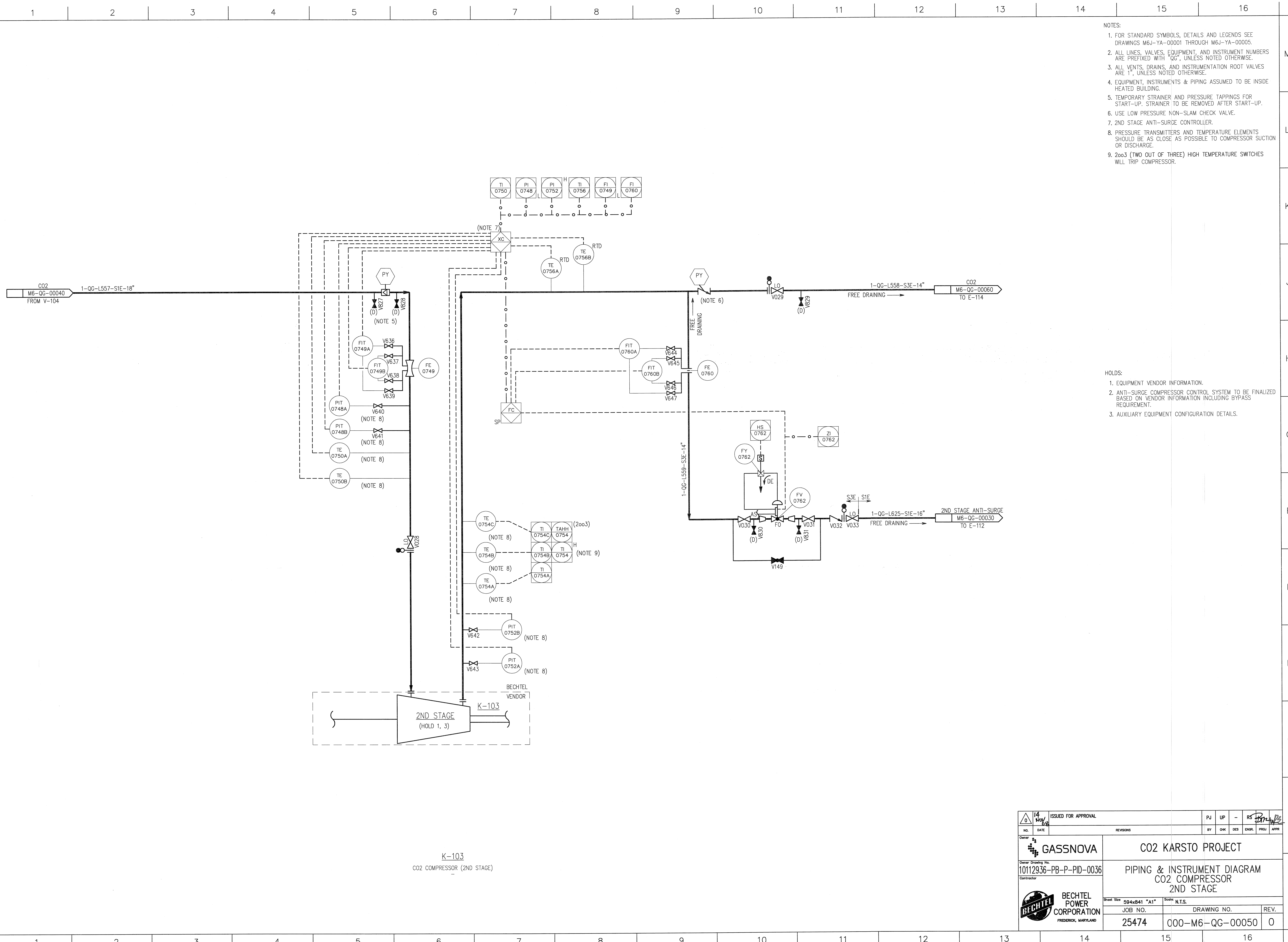


©Bechtel Corporation, 2008. All rights reserved. Bechtel Confidential. Contains information that is confidential and proprietary to Bechtel and may not be used, reproduced, or disseminated without the prior written permission of Bechtel. This document is prepared exclusively for Gassnova in connection with the preparation of the FEED study for the CO2 Capture Facility at Karsto, Norway, and is not to be relied upon by others or used in connection with any other project.



- NOTES:
- FOR STANDARD SYMBOLS, DETAILS AND LEGENDS SEE DRAWINGS M6J-YA-00001 THROUGH M6J-YA-00005.
 - ALL LINES, VALVES, EQUIPMENT, AND INSTRUMENT NUMBERS ARE PREFIXED WITH "QG", UNLESS NOTED OTHERWISE.
 - ALL VENTS, DRAINS, AND INSTRUMENTATION ROOT VALVES ARE 1", UNLESS NOTED OTHERWISE.
 - EQUIPMENT, INSTRUMENTS & PIPING ASSUMED TO BE INSIDE HEATED BUILDING.
 - TEMPORARY STRAINER AND PRESSURE TAPPINGS FOR START-UP, STRAINER TO BE REMOVED AFTER START-UP.
 - USE LOW PRESSURE NON-SLAM CHECK VALVE.
 - 2ND STAGE ANTI-SURGE CONTROLLER.
 - PRESSURE TRANSMITTERS AND TEMPERATURE ELEMENTS SHOULD BE AS CLOSE AS POSSIBLE TO COMPRESSOR SUCTION OR DISCHARGE.
 - 2oo3 (TWO OUT OF THREE) HIGH TEMPERATURE SWITCHES WILL TRIP COMPRESSOR.

- HOLDS:
- EQUIPMENT VENDOR INFORMATION.
 - ANTI-SURGE COMPRESSOR CONTROL SYSTEM TO BE FINALIZED BASED ON VENDOR INFORMATION INCLUDING BYPASS REQUIREMENT.
 - AUXILIARY EQUIPMENT CONFIGURATION DETAILS.

K-103
CO2 COMPRESSOR (2ND STAGE)

BECHTEL POWER CORPORATION FREDERICK, MARYLAND		ISSUED FOR APPROVAL NO. DATE REVISIONS BY CHK DES ENGR. PROJ. APPR.	
Owner: GASSNOVA		CO2 KARSTO PROJECT	
Owner Drawing No. 10112936-PB-P-PID-0036		PIPING & INSTRUMENT DIAGRAM CO2 COMPRESSOR 2ND STAGE	
Sheet Size 594x841 "A1" Scale N.T.S.		JOB NO. 25474	DRAWING NO. 000-M6-QG-00050
		REV. 0	