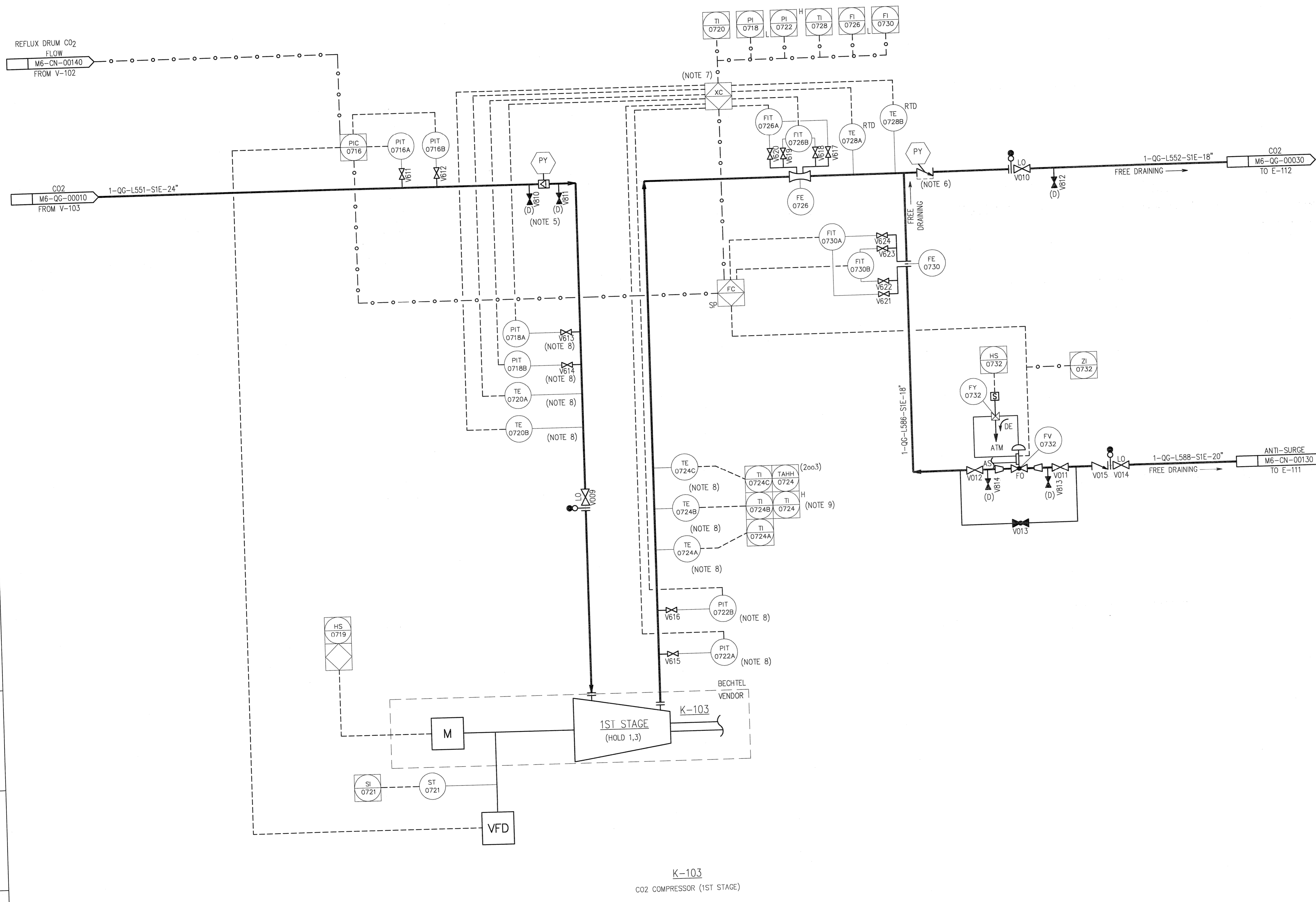


© Bechtel Corporation 2008. All rights reserved. Bechtel Confidential. Contains information that is confidential and proprietary to Bechtel and may not be used, reproduced, or disclosed in any format without the prior written permission of Bechtel. This document is prepared exclusively for Gassnova in connection with the preparation of the FEED study for the CO2 Capture Facility at Karsto, Norway, and is not to be relied upon by others or used in connection with any other project.



- NOTES:
1. FOR STANDARD SYMBOLS, DETAILS AND LEGENDS SEE DRAWINGS M6J-YA-00001 THROUGH M6J-YA-00005.
  2. ALL LINES, VALVES, EQUIPMENT, AND INSTRUMENT NUMBERS ARE PREFIXED WITH "QG", UNLESS NOTED OTHERWISE.
  3. ALL VENTS, DRAINS, AND INSTRUMENTATION ROOT VALVES ARE 1", UNLESS NOTED OTHERWISE.
  4. EQUIPMENT, INSTRUMENTS & PIPING ASSUMED TO BE INSIDE HEATED BUILDING.
  5. TEMPORARY STRAINER AND PRESSURE TAPPINGS FOR START-UP. STRAINER TO BE REMOVED AFTER START-UP.
  6. USE LOW PRESSURE NON-SLAM CHECK VALVE.
  7. 1ST STAGE ANTI-SURGE CONTROLLER.
  8. PRESSURE TRANSMITTERS AND TEMPERATURE ELEMENTS SHOULD BE AS CLOSE AS POSSIBLE TO COMPRESSOR SUCTION OR DISCHARGE.
  9. 2oo3 (TWO OUT OF THREE) HIGH TEMPERATURE SWITCHES WILL TRIP COMPRESSOR.

- HOLDS:
1. EQUIPMENT VENDOR INFORMATION.
  2. ANTI-SURGE COMPRESSOR CONTROL SYSTEM TO BE FINALIZED BASED ON VENDOR INFORMATION INCLUDING BYPASS REQUIREMENT.
  3. AUXILIARY EQUIPMENT/CONFIGURATION DETAILS.

K-103  
CO2 COMPRESSOR (1ST STAGE)

		ISSUED FOR APPROVAL 14 Nov 08		PJ UP - RS	
GASSNOVA Owner		CO2 KARSTO PROJECT			
10112936-PB-P-PID-0033 Contractor		PIPING & INSTRUMENT DIAGRAM CO2 COMPRESSOR 1ST STAGE			
BECHTEL POWER CORPORATION FREDERICK, MARYLAND		Sheet Size 594x841 "A1" Scale N.T.S.	JOB NO. 25474	DRAWING NO. 000-M6-QG-00020	REV. 0