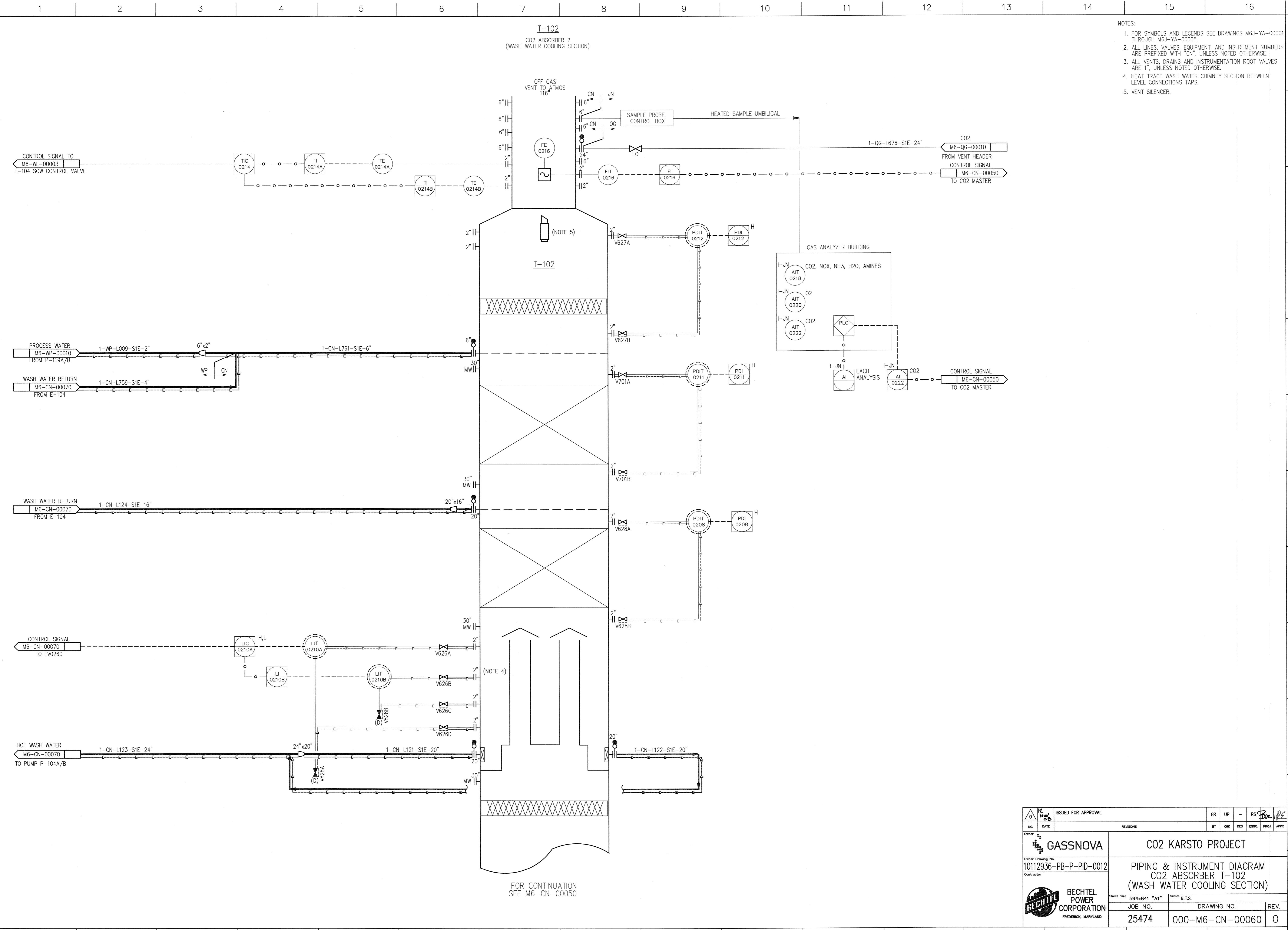


©Bechtel Corporation, 2008. All rights reserved. Bechtel Confidential. Contains information that is confidential and proprietary to Bechtel and may not be used, reproduced or disclosed in any format without Bechtel's prior written permission. This document is prepared exclusively for Gassnova in connection with the preparation of the FEED study for the CO2 Capture Facility at Karsto, Norway, and is not to be relied upon by others or used in connection with any other project.



- NOTES:
1. FOR SYMBOLS AND LEGENDS SEE DRAWINGS M6J-YA-00001 THROUGH M6J-YA-00005.
  2. ALL LINES, VALVES, EQUIPMENT, AND INSTRUMENT NUMBERS ARE PREFIXED WITH "CN", UNLESS NOTED OTHERWISE.
  3. ALL VENTS, DRAINS AND INSTRUMENTATION ROOT VALVES ARE 1", UNLESS NOTED OTHERWISE.
  4. HEAT TRACE WASH WATER CHIMNEY SECTION BETWEEN LEVEL CONNECTIONS TAPS.
  5. VENT SILENCER.

T-102  
CO2 ABSORBER 2  
(WASH WATER COOLING SECTION)

T-102

FOR CONTINUATION  
SEE M6-CN-00050

ISSUED FOR APPROVAL		GR	UP	RS	BY	CHK	DES	ENGR	PROJ	APPR					
NO.	DATE	REVISIONS								BY	CHK	DES	ENGR	PROJ	APPR
Owner: <b>GASSNOVA</b>		CO2 KARSTO PROJECT													
Owner Drawing No.: 10112936-PB-P-PID-0012		PIPING & INSTRUMENT DIAGRAM CO2 ABSORBER T-102 (WASH WATER COOLING SECTION)													
Contractor: <b>BECHTEL POWER CORPORATION</b> FREDERICK, MARYLAND		Sheet Size: 594x841 "A1"	Scale: N.T.S.												
JOB NO.: 25474		DRAWING NO.: 000-M6-CN-00060				REV.:						O			