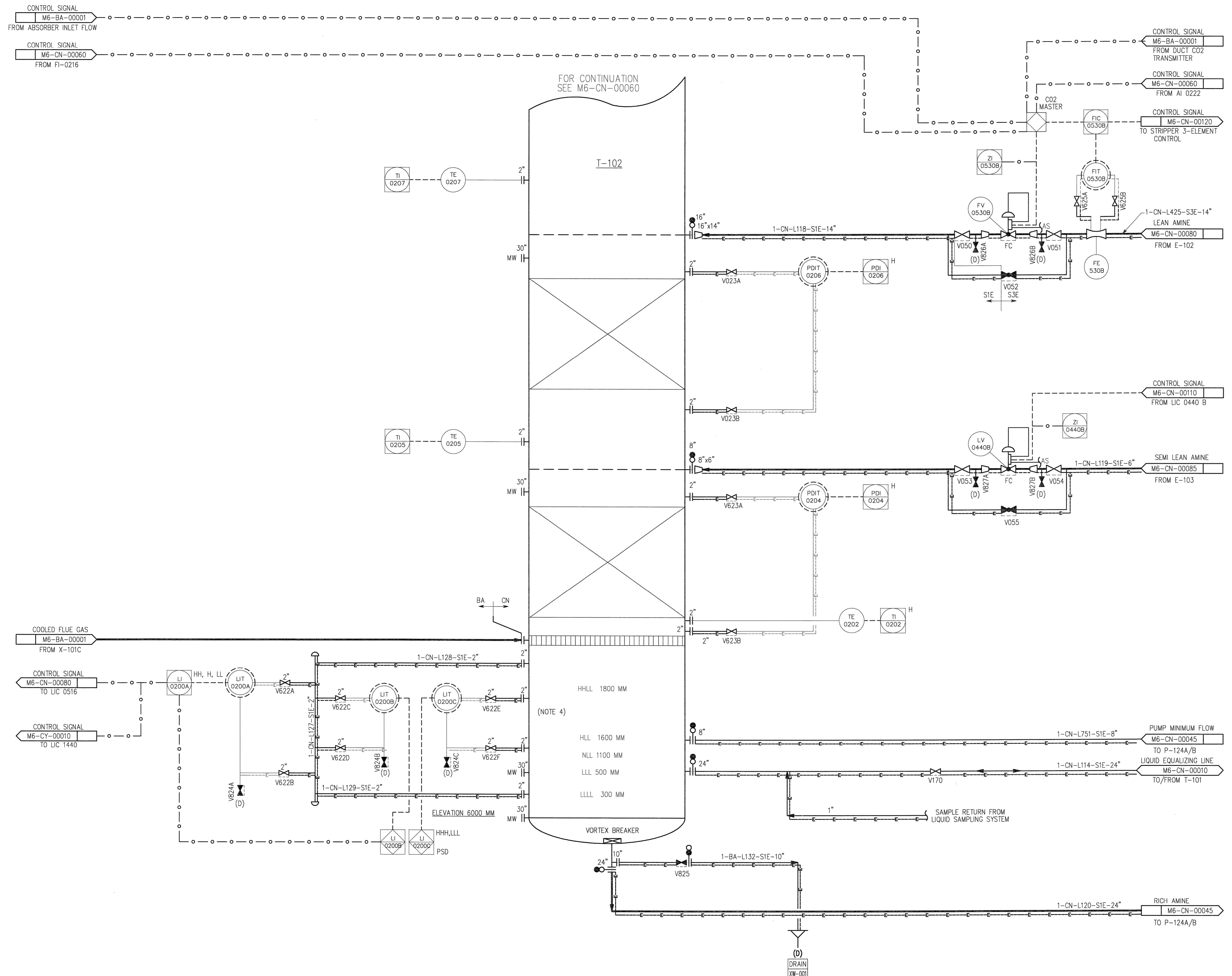


©Bechtel Corporation 2008. All rights reserved. Bechtel, Confidential and proprietary information that is confidential and proprietary to Bechtel and may not be used, reproduced or disclosed in any format without Bechtel's prior written permission. This document is prepared exclusively for Gassnova in connection with the preparation of the FEED study for the CO2 Capture Facility at Karsto, Norway, and is not to be relied upon by others or used in connection with any other project.

T-102
CO2 ABSORBER 2
(AMINE SECTION)



ISSUED FOR APPROVAL		GR	UP	-	RS	BY	CHK	DES	ENGR	PROJ	APPR
NO.	DATE	REVISIONS									
GASSNOVA		CO2 KARSTO PROJECT									
10112936-PB-P-PID-0011		PIPING & INSTRUMENT DIAGRAM CO2 ABSORBER T-102 (AMINE SECTION)									
BECHTEL POWER CORPORATION		Sheet Size 594x841 "A1"		Scale N.T.S.		JOB NO.		DRAWING NO.		REV.	
25474		000-M6-CN-00050		O							