

©Bechtel Corporation 2008. All rights reserved. Bechtel, Confidential. Contains information that is confidential and proprietary to Bechtel and may not be used, reproduced, or disclosed in any format without Bechtel's prior written permission. This document is prepared exclusively for Gassnova in connection with any other project.

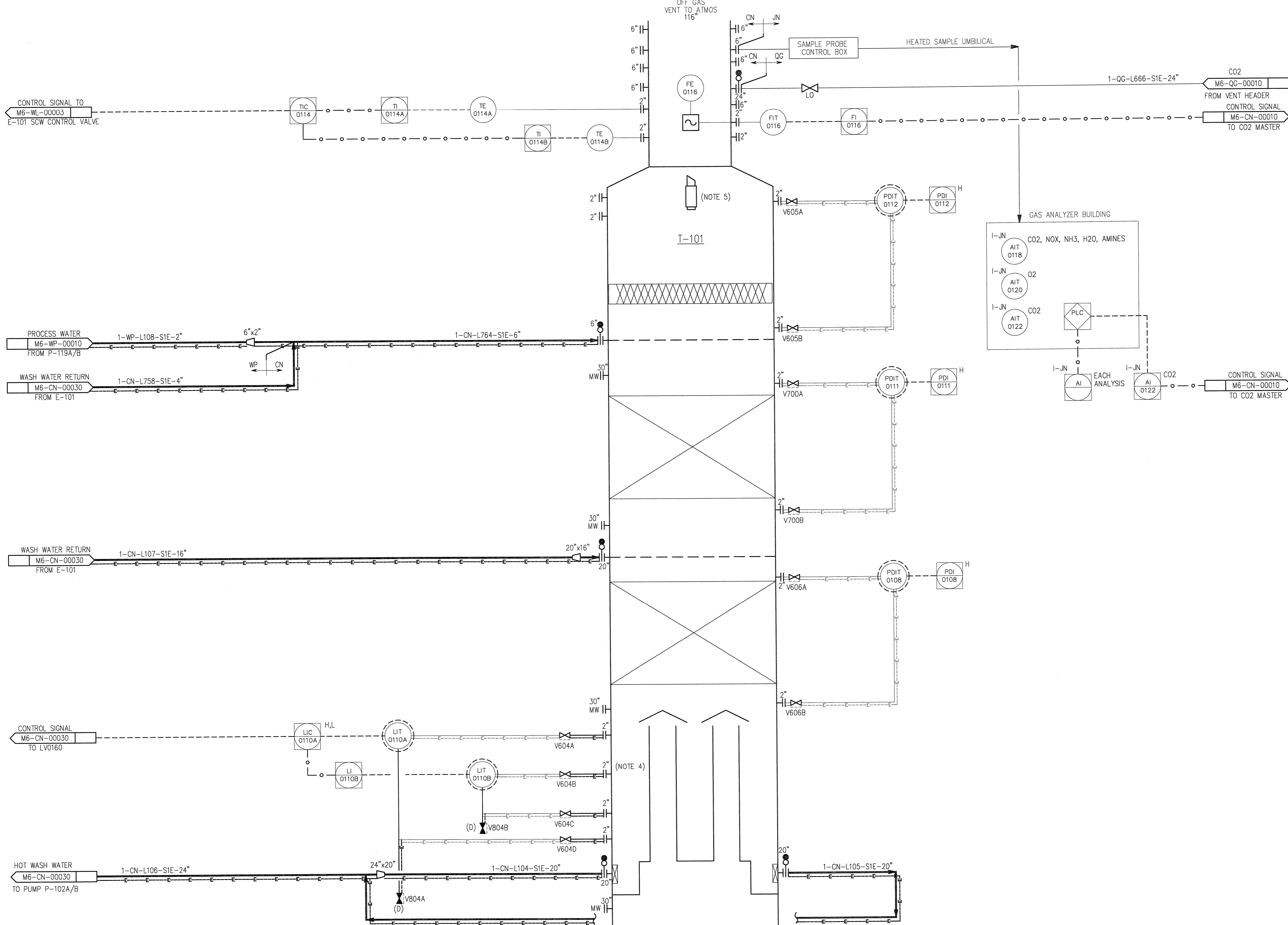
**T-101**  
 CO2 ABSORBER 1  
 (WASH WATER COOLING SECTION)

OFF GAS  
 VENT TO ATMOS  
 116"

T-101

FOR CONTINUATION  
 SEE M6-CN-00010

- NOTES:
1. FOR SYMBOLS AND LEGENDS SEE DRAWINGS M6J-YA-00001 THROUGH M6J-YA-00005.
  2. ALL LINES, VALVES, EQUIPMENT, AND INSTRUMENT NUMBERS ARE PREFIXED WITH "CN", UNLESS NOTED OTHERWISE.
  3. ALL VENTS, DRAINS AND INSTRUMENTATION ROOT VALVES ARE 1", UNLESS NOTED OTHERWISE.
  4. HEAT TRACE WASH WATER CHIMNEY SECTION BETWEEN LEVEL CONNECTIONS TAPS.
  5. VENT SILENCER.



ISSUED FOR APPROVAL		GR	LIP	-	RS	BY	CHK	DES	ENGR.	PRD	APPR	
NO.	DATE	REVISIONS					BY	CHK	DES	ENGR.	PRD	APPR
GASSNOVA		CO2 KARSTO PROJECT										
10112936-PB-P-PID-0007		PIPING & INSTRUMENT DIAGRAM CO2 ABSORBER T-101 (WASH WATER COOLING SECTION)										
BECHTEL POWER CORPORATION		Sheet Size	594x841 "A1"		Scale		N.T.S.					
FREDERICK, MARYLAND		JOB NO.	25474		DRAWING NO.	000-M6-CN-00020		REV.	0			