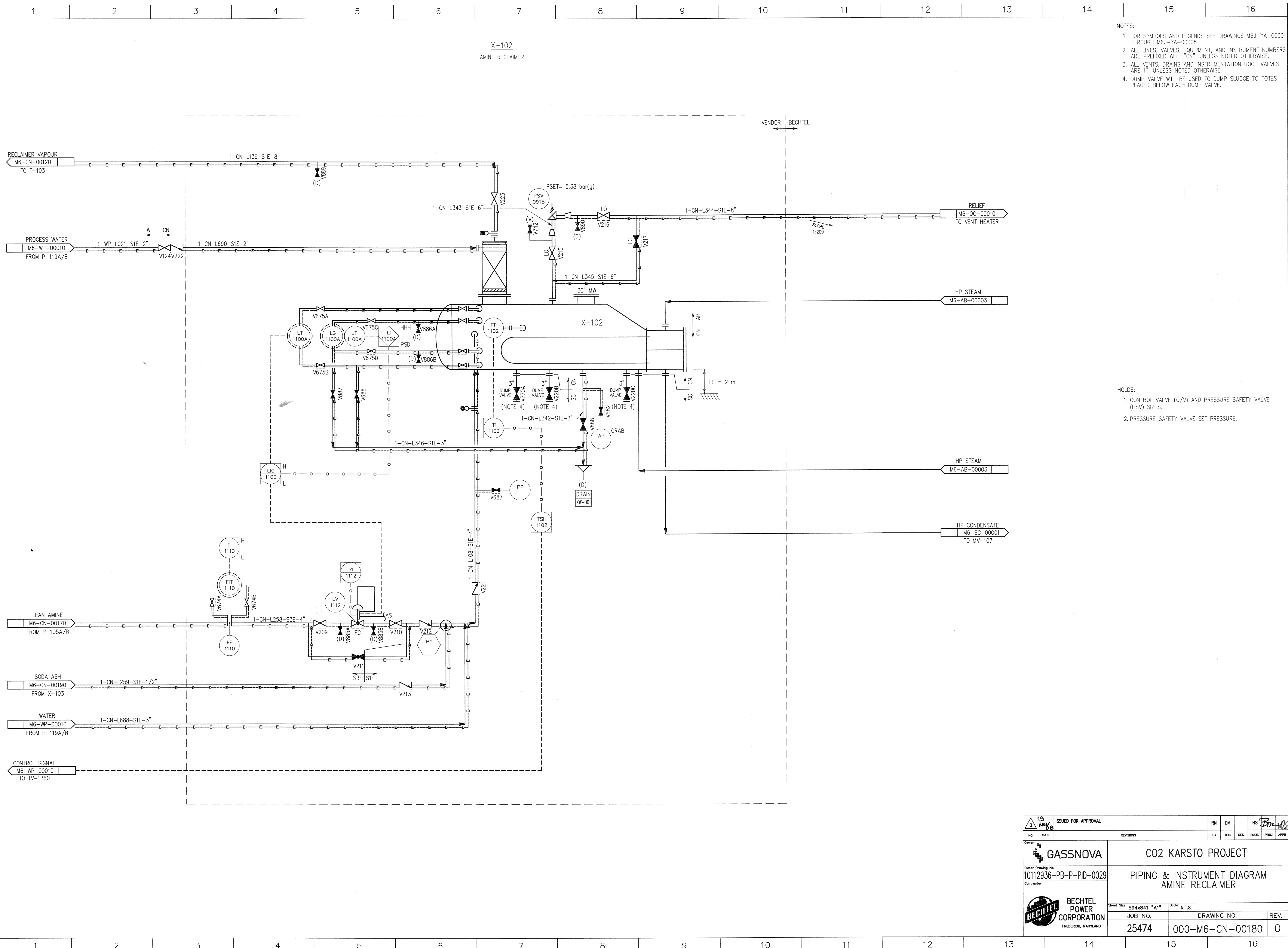


© Bechtel Corporation 2008. All rights reserved. Bechtel Confidential. Contains information that is confidential and proprietary to Bechtel and may not be used, reproduced, or disseminated in any form without the prior written permission of Bechtel. This document is prepared exclusively for Gassnova in connection with the preparation of the FEED study for the CO2 Capture Facility at Karsto, Norway, and is not to be relied upon by others or used in connection with any other project.



- NOTES:
1. FOR SYMBOLS AND LEGENDS SEE DRAWINGS M6J-YA-0001 THROUGH M6J-YA-0005.
 2. ALL LINES, VALVES, EQUIPMENT, AND INSTRUMENT NUMBERS ARE PREFIXED WITH "CN", UNLESS NOTED OTHERWISE.
 3. ALL VENTS, DRAINS AND INSTRUMENTATION ROOT VALVES ARE "1", UNLESS NOTED OTHERWISE.
 4. DUMP VALVE WILL BE USED TO DUMP SLUDGE TO TOTES PLACED BELOW EACH DUMP VALVE.

- HOLDS:
1. CONTROL VALVE (C/V) AND PRESSURE SAFETY VALVE (PSV) SIZES.
 2. PRESSURE SAFETY VALVE SET PRESSURE.

		ISSUED FOR APPROVAL		RN	DM	-	RS			
NO.	DATE	REVISIONS			BY	CHK	DES	ENGR.	PROJ	APPR
Owner: GASSNOVA		CO2 KARSTO PROJECT								
Owner Drawing No. 10112936-PB-P-PID-0029		PIPING & INSTRUMENT DIAGRAM AMINE RECLAIMER								
Contractor: BECHTEL POWER CORPORATION FREDERICK, MARYLAND		Sheet Size 594x841 "A1"	Scale N.T.S.		JOB NO. 25474		DRAWING NO. 000-M6-CN-00180		REV. 0	