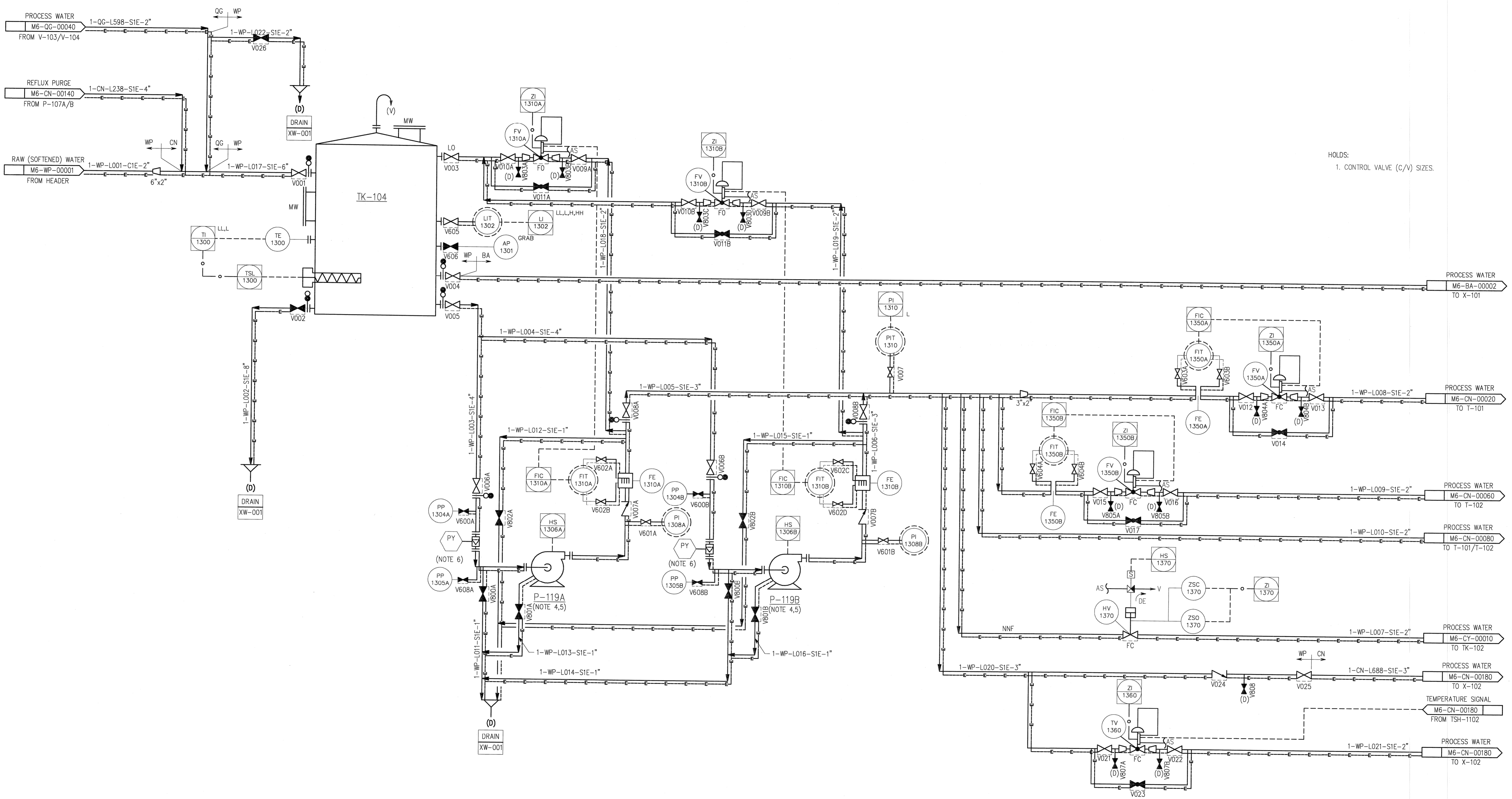


©Bechtel Corporation 2008. All rights reserved. Bechtel Confidential. This document is prepared exclusively for Gassnova in connection with the project. It is not to be used, reproduced or disclosed in any way for the CO2 Capture Facility at Karsto, Norway, and is not to be relied upon by others or used in connection with any other project.

TK-104
PROCESS WATER SURGE TANK



- NOTES:
- FOR SYMBOLS AND LEGENDS SEE DRAWINGS M6J-YA-00001 THROUGH M6J-YA-00005.
 - ALL LINES, VALVES, EQUIPMENT, AND INSTRUMENT NUMBERS ARE PREFIXED WITH "WP", UNLESS NOTED OTHERWISE.
 - ALL VENTS, DRAINS AND INSTRUMENTATION ROOT VALVES ARE 1", UNLESS NOTED OTHERWISE.
 - EQUIPMENT TO BE HEAT TRACED.
 - PUMP SEAL FLUSHING DETAILS TO BE PREPARED LATER.
 - STARTUP STRAINER TO BE REMOVED SUBSEQUENT TO PLANT COMMISSIONING. TO BE REPLACED BY COARSE STRAINER FOR NORMAL OPERATIONS.

HOLDS:
1. CONTROL VALVE (C/V) SIZES.

P-119A/B
ABSORBER MAKEUP
WATER PUMP

ISSUED FOR APPROVAL		KJ	GR	-	RS	BY	CHK	DES	ENGR	PROJ	APPR
NO.	DATE	REVISIONS									
GASSNOVA		CO2 KARSTO PROJECT									
Owner Drawing No. 10112936-PB-P-PID-0043		PIPING & INSTRUMENT DIAGRAM ABSORBER MAKEUP WATER PUMP									
Contractor		BECHTEL POWER CORPORATION FREDERICK, MARYLAND									
Sheet Size	594x841 "A1"	Scale	N.T.S.								
JOB NO.	25474	DRAWING NO.	000-M6-WP-00010								
REV.	0										