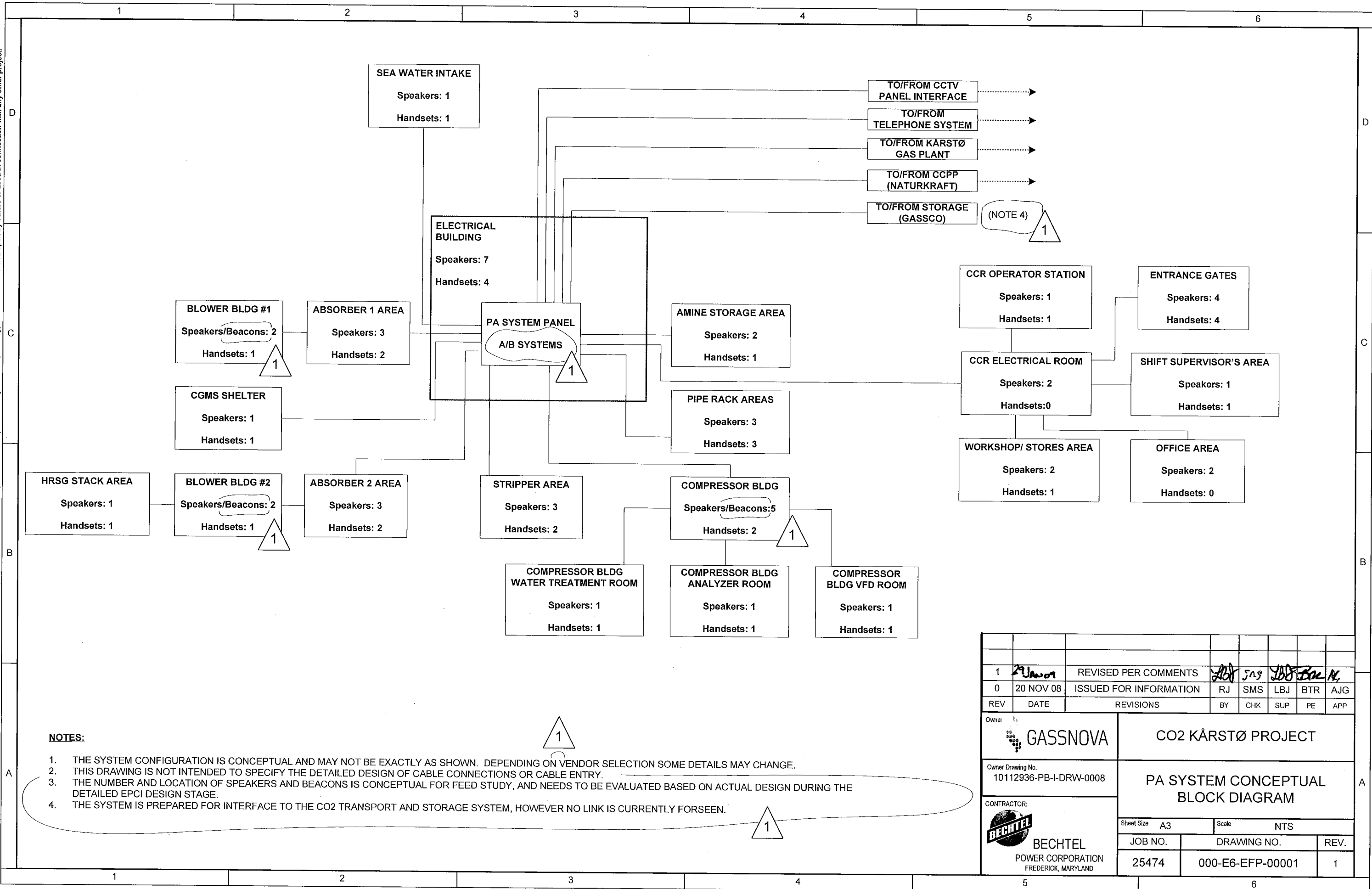


© Bechtel Corporation 2008. All rights reserved. Bechtel Confidential. Contains information that is confidential and proprietary to Bechtel and may not be used, reproduced, or disclosed in any format without Bechtel's prior written permission. This document is prepared exclusively for Gassnova in connection with the preparation of the FEED study for the CO2 Capture Facility at Kårstø, Norway, and is not to be relied upon by others or used in connection with any other project.



NOTES:

1. THE SYSTEM CONFIGURATION IS CONCEPTUAL AND MAY NOT BE EXACTLY AS SHOWN. DEPENDING ON VENDOR SELECTION SOME DETAILS MAY CHANGE.
2. THIS DRAWING IS NOT INTENDED TO SPECIFY THE DETAILED DESIGN OF CABLE CONNECTIONS OR CABLE ENTRY.
3. THE NUMBER AND LOCATION OF SPEAKERS AND BEACONS IS CONCEPTUAL FOR FEED STUDY, AND NEEDS TO BE EVALUATED BASED ON ACTUAL DESIGN DURING THE DETAILED EPCI DESIGN STAGE.
4. THE SYSTEM IS PREPARED FOR INTERFACE TO THE CO2 TRANSPORT AND STORAGE SYSTEM, HOWEVER NO LINK IS CURRENTLY FORSEEN.

1	21 Jun 08	REVISED PER COMMENTS	JBJ	SMS	JBB	BTR	AJG
0	20 NOV 08	ISSUED FOR INFORMATION	RJ	SMS	LBJ	BTR	AJG
REV	DATE	REVISIONS	BY	CHK	SUP	PE	APP
Owner			GASSNOVA				
Owner Drawing No.			10112936-PB-I-DRW-0008				
CONTRACTOR:			BECHTEL POWER CORPORATION FREDERICK, MARYLAND				
Project Name			CO2 KÅRSTØ PROJECT				
Drawing Title			PA SYSTEM CONCEPTUAL BLOCK DIAGRAM				
Sheet Size		A3		Scale		NTS	
JOB NO.		DRAWING NO.		REV.			
25474		000-E6-EFP-00001		1			