


Overall Time Schedule (Level II)

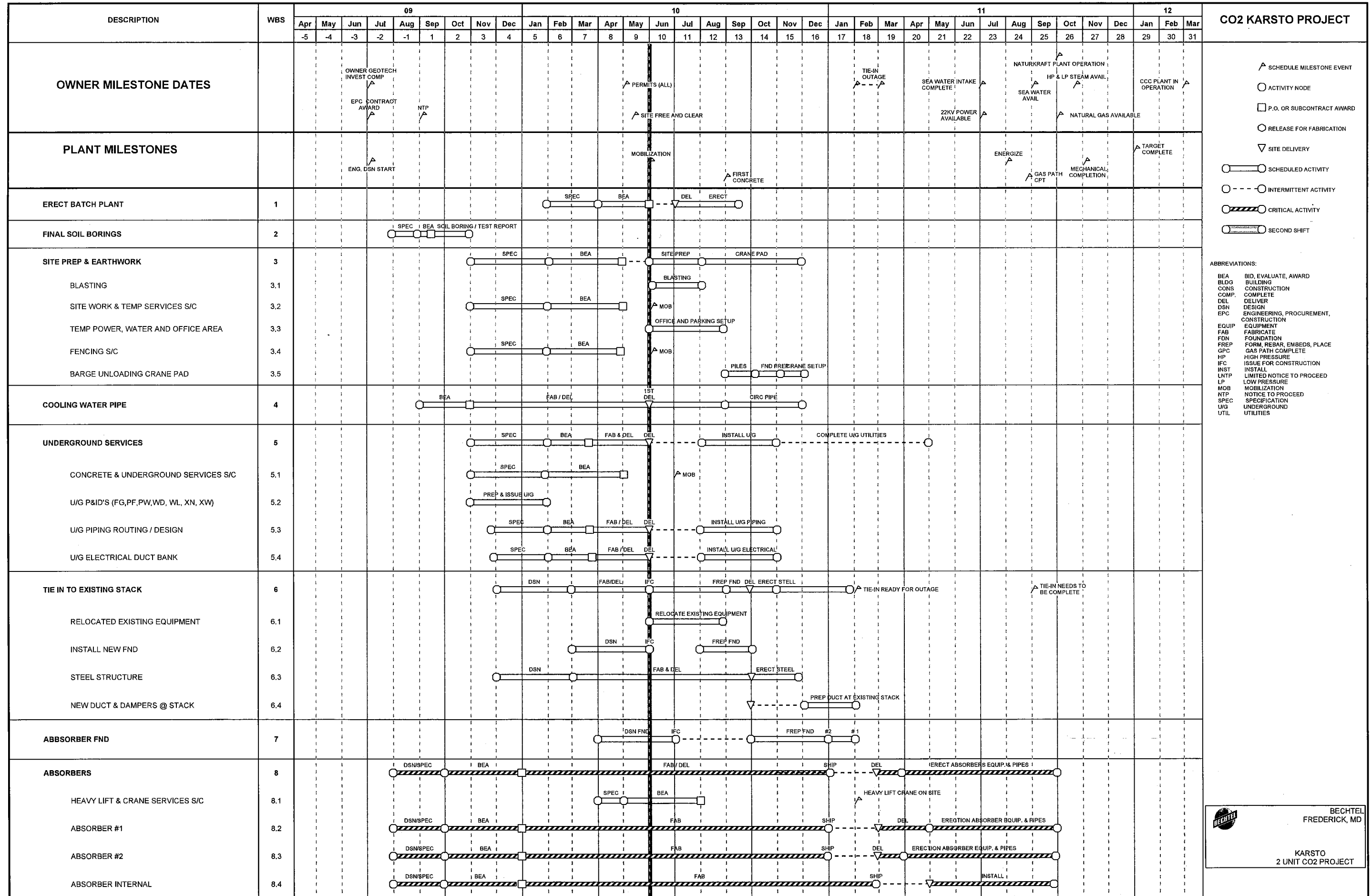
CO₂ Capture Facility

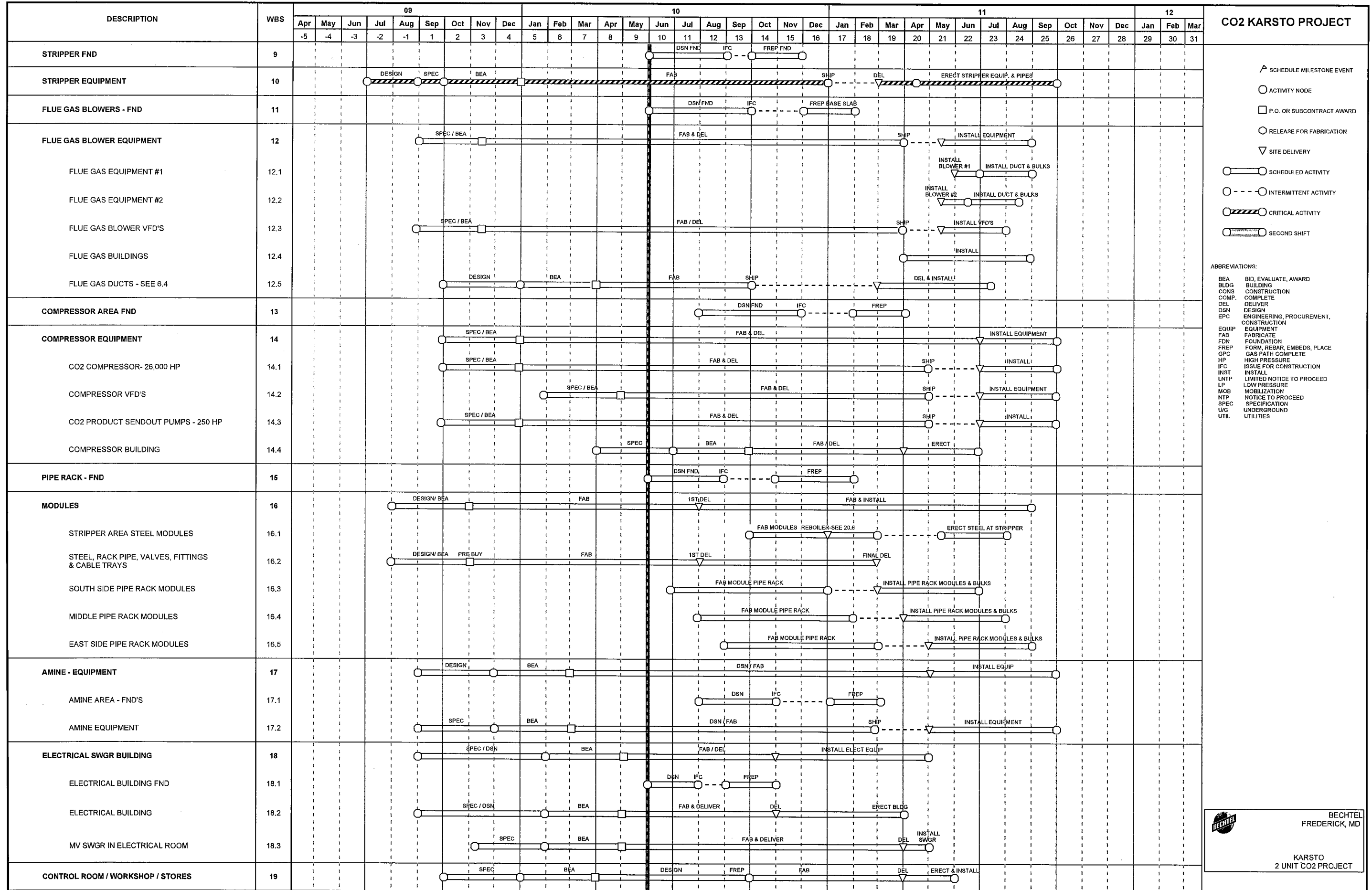
Kårstø, Norway

Bechtel Proprietary and Confidential

© 2008 Bechtel Power Corporation. All rights reserved. Bechtel Confidential. Contains information that is confidential and proprietary to Bechtel and may not be used, reproduced or disclosed in any format without Bechtel's prior written permission. This document is prepared exclusively for Gassnova in connection with the preparation of the FEED study for the CO₂ Capture Facility at Karsto, Norway, and is not to be relied upon by others or used in connection with any other project.

0	12 JAN 09	Issued for Approval	LA	BARTEL	WKE				
Rev.	Date	Reason for Revision	By	Check	App	App	APP		
 Bechtel Power Corporation			Job No. 25474					Document No.	
			25474 - 000 - GDS - GAM - 00002					Rev. 0	
			PAGE 1 of 4						
GASSNOVA			Project No. - Originator - Disc Code - Doc Type - Serial No. 10112936 - PB - G - PPL - 0003						






CO2 KARSTO PROJECT

- ▲ SCHEDULE MILESTONE EVENT
- ACTIVITY NODE
- P.O. OR SUBCONTRACT AWARD
- RELEASE FOR FABRICATION
- ▽ SITE DELIVERY
- SCHEDULED ACTIVITY
- - - INTERMITTENT ACTIVITY
- ▨ CRITICAL ACTIVITY
- SECOND SHIFT

- ABBREVIATIONS:
- BEA BID, EVALUATE, AWARD
 - BLDG BUILDING
 - CONS CONSTRUCTION
 - COMP. COMPLETE
 - DEL DELIVER
 - DSN DESIGN
 - EPC ENGINEERING, PROCUREMENT, CONSTRUCTION
 - EQUIP EQUIPMENT
 - FAB FABRICATE
 - FDN FOUNDATION
 - FREP FORM, REBAR, EMBEDS, PLACE
 - GPC GAS PATH COMPLETE
 - HP HIGH PRESSURE
 - IFC ISSUE FOR CONSTRUCTION
 - INST INSTALL
 - LNTP LIMITED NOTICE TO PROCEED
 - LP LOW PRESSURE
 - MOB MOBILIZATION
 - NTP NOTICE TO PROCEED
 - SPEC SPECIFICATION
 - UG UNDERGROUND
 - UTIL UTILITIES


BECHTEL
 FREDERICK, MD

 KARSTO
 2 UNIT CO2 PROJECT

