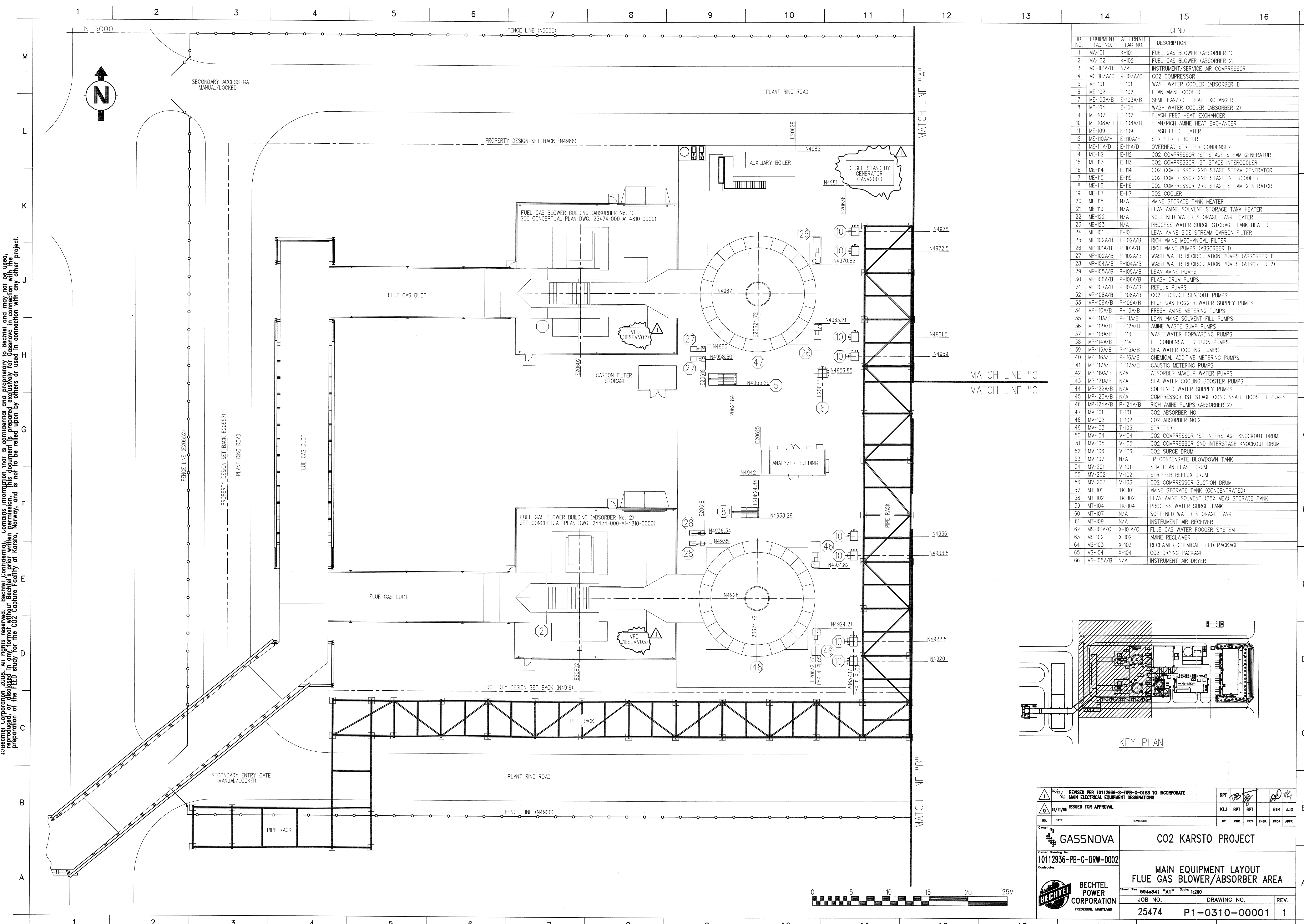
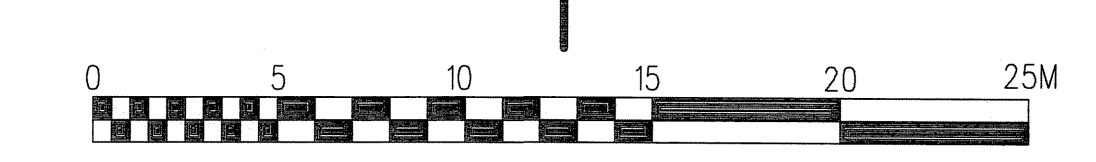
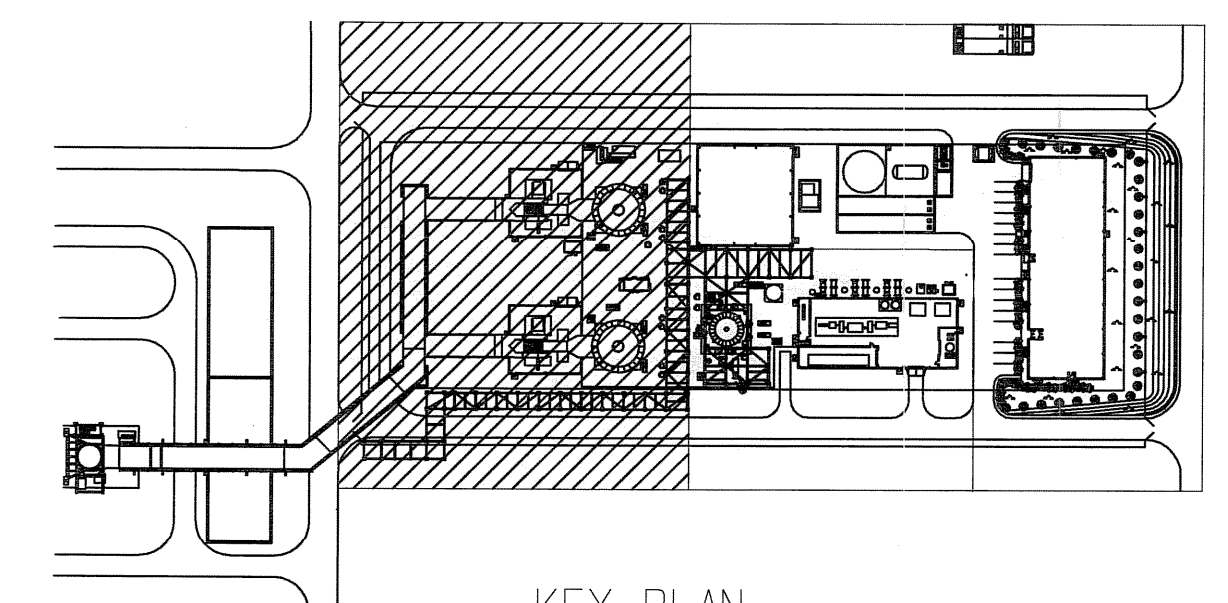


© Bechtel Corporation 2009. All rights reserved. Bechtel, Confidential, Agency, Confidential, and Proprietary to be used only for the preparation of the FEED study for the CO2 Capture Facility at Kemmer, Norway, and is not to be relied upon by others or used in connection with any other project.



LEGEND			
ID NO.	EQUIPMENT TAG NO.	ALTERNATE TAG NO.	DESCRIPTION
1	MA-101	K-101	FUEL GAS BLOWER (ABSORBER 1)
2	MA-102	K-102	FUEL GAS BLOWER (ABSORBER 2)
3	MC-101A/B	N/A	INSTRUMENT/SERVICE AIR COMPRESSOR
4	MC-103A/C	K-103A/C	CO2 COMPRESSOR
5	ME-101	E-101	WASH WATER COOLER (ABSORBER 1)
6	ME-102	E-102	LEAN AMINE COOLER
7	ME-103A/B	E-103A/B	SEMI-LEAN/RICH HEAT EXCHANGER
8	ME-104	E-104	WASH WATER COOLER (ABSORBER 2)
9	ME-107	E-107	FLASH FEED HEAT EXCHANGER
10	ME-108A/H	E-108A/H	LEAN/RICH AMINE HEAT EXCHANGER
11	ME-109	E-109	FLASH FEED HEATER
12	ME-110A/H	E-110A/H	STRIPPER REBOILER
13	ME-111A/D	E-111A/D	OVERHEAD STRIPPER CONDENSER
14	ME-112	E-112	CO2 COMPRESSOR 1ST STAGE STEAM GENERATOR
15	ME-113	E-113	CO2 COMPRESSOR 1ST STAGE INTERCOOLER
16	ME-114	E-114	CO2 COMPRESSOR 2ND STAGE STEAM GENERATOR
17	ME-115	E-115	CO2 COMPRESSOR 2ND STAGE INTERCOOLER
18	ME-116	E-116	CO2 COMPRESSOR 3RD STAGE STEAM GENERATOR
19	ME-117	E-117	CO2 COOLER
20	ME-118	N/A	AMINE STORAGE TANK HEATER
21	ME-119	N/A	LEAN AMINE SOLVENT STORAGE TANK HEATER
22	ME-122	N/A	SOFTENED WATER STORAGE TANK HEATER
23	ME-123	N/A	PROCESS WATER SURGE STORAGE TANK HEATER
24	MF-101	F-101	LEAN AMINE SIDE STREAM CARBON FILTER
25	MP-102A/B	F-102A/B	RICH AMINE MECHANICAL FILTER
26	MP-101A/B	P-101A/B	RICH AMINE PUMPS (ABSORBER 1)
27	MP-102A/B	P-102A/B	WASH WATER RECIRCULATION PUMPS (ABSORBER 1)
28	MP-104A/B	P-104A/B	WASH WATER RECIRCULATION PUMPS (ABSORBER 2)
29	MP-105A/B	P-105A/B	LEAN AMINE PUMPS
30	MP-106A/B	P-106A/B	FLASH DRUM PUMPS
31	MP-107A/B	P-107A/B	REFLUX PUMPS
32	MP-108A/B	P-108A/B	CO2 PRODUCT SENDOUT PUMPS
33	MP-109A/B	P-109A/B	FLUE GAS FOGGER WATER SUPPLY PUMPS
34	MP-110A/B	P-110A/B	FRESH AMINE METERING PUMPS
35	MP-111A/B	P-111A/B	LEAN AMINE SOLVENT FILL PUMPS
36	MP-112A/B	P-112A/B	AMINE WASTE SUMP PUMPS
37	MP-113A/B	P-113	WASTEWATER FORWARDING PUMPS
38	MP-114A/B	P-114	LP CONDENSATE RETURN PUMPS
39	MP-115A/B	P-115A/B	SEA WATER COOLING PUMPS
40	MP-116A/B	P-116A/B	CHEMICAL ADDITIVE METERING PUMPS
41	MP-117A/B	P-117A/B	CAUSTIC METERING PUMPS
42	MP-119A/B	N/A	ABSORBER MAKEUP WATER PUMPS
43	MP-121A/B	N/A	SEA WATER COOLING BOOSTER PUMPS
44	MP-122A/B	N/A	SOFTENED WATER SUPPLY PUMPS
45	MP-123A/B	N/A	COMPRESSOR 1ST STAGE CONDENSATE BOOSTER PUMPS
46	MP-124A/B	P-124A/B	RICH AMINE PUMPS (ABSORBER 2)
47	MV-101	T-101	CO2 ABSORBER NO.1
48	MV-102	T-102	CO2 ABSORBER NO.2
49	MV-103	T-103	STRIPPER
50	MV-104	V-104	CO2 COMPRESSOR 1ST INTERSTAGE KNOCKOUT DRUM
51	MV-105	V-105	CO2 COMPRESSOR 2ND INTERSTAGE KNOCKOUT DRUM
52	MV-106	V-106	CO2 SURGE DRUM
53	MV-107	N/A	LP CONDENSATE BLOWDOWN TANK
54	MV-201	V-101	SEMI-LEAN FLASH DRUM
55	MV-202	V-102	STRIPPER REFLUX DRUM
56	MV-203	V-103	CO2 COMPRESSOR SUCTION DRUM
57	MT-101	TK-101	AMINE STORAGE TANK (CONCENTRATED)
58	MT-102	TK-102	LEAN AMINE SOLVENT (35% MEA) STORAGE TANK
59	MT-104	TK-104	PROCESS WATER SURGE TANK
60	MT-107	N/A	SOFTENED WATER STORAGE TANK
61	MT-109	N/A	INSTRUMENT AIR RECEIVER
62	MS-101A/C	X-101A/C	FLUE GAS WATER FOGGER SYSTEM
63	MS-102	X-102	AMINE RECLAIMER
64	MS-103	X-103	RECLAIMER CHEMICAL FEED PACKAGE
65	MS-104	X-104	CO2 DRYING PACKAGE
66	MS-105A/B	N/A	INSTRUMENT AIR DRYER



REVISIONS PER 10112936-S-PFB-G-0188 TO INCORPORATE MAIN ELECTRICAL EQUIPMENT DESIGNATIONS 18/11/09 ISSUED FOR APPROVAL		RPT	BT	BT	BT	BT
NO.	DATE	REVISIONS	BY	CHK	DES	ENGR.
GASSNOVA Owner Drawing No. 10112936-PB-G-DRW-0002 Contractor		CO2 KARSTO PROJECT MAIN EQUIPMENT LAYOUT FLUE GAS BLOWER/ABSORBER AREA				
BECHTEL POWER CORPORATION FREDERICK, MARYLAND		SHEET NO. 594x841 "A1" JOB NO. 25474	DRAWING NO. P1-0310-00001	SCALE 1:200	REV. 1	APPR.