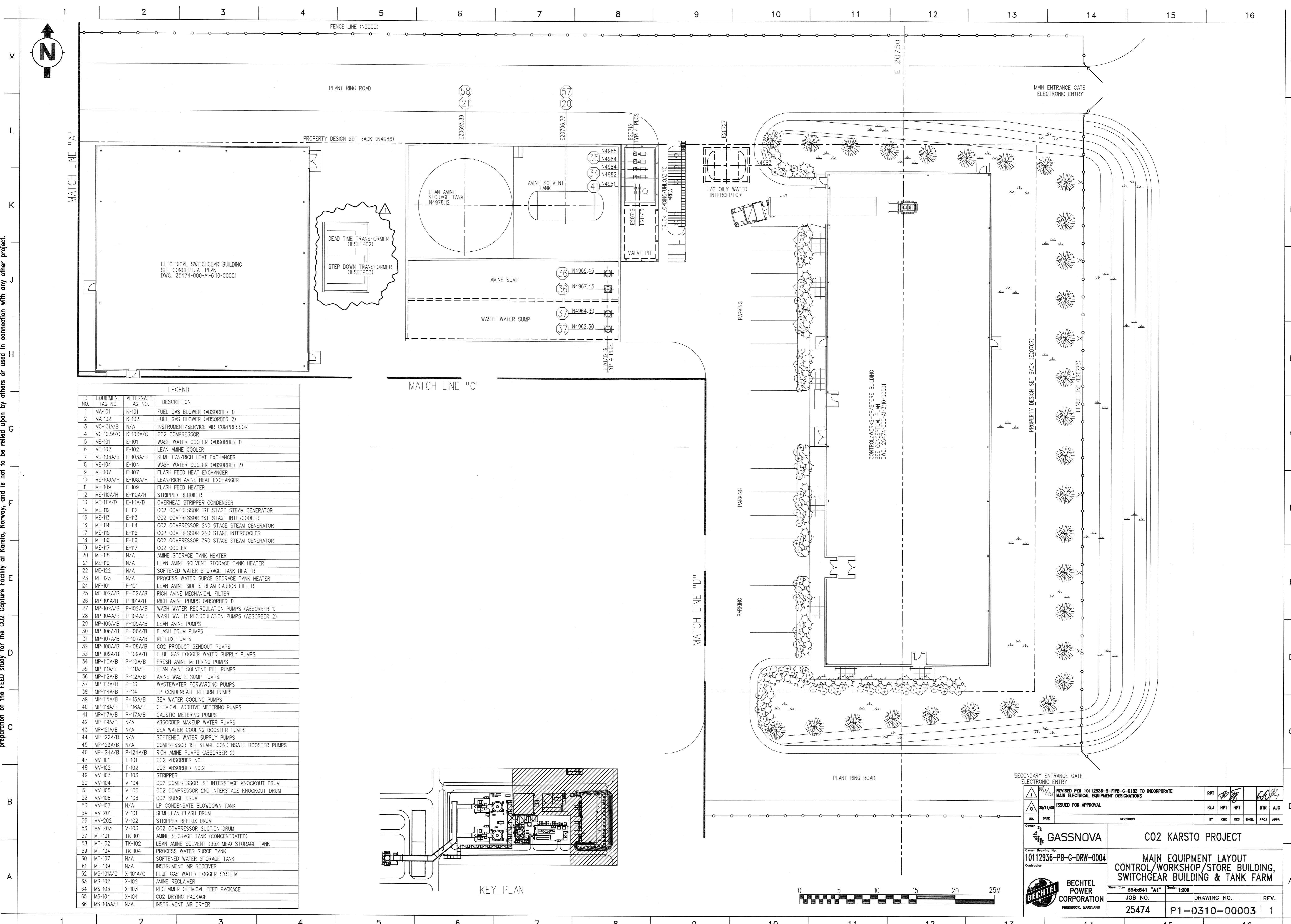
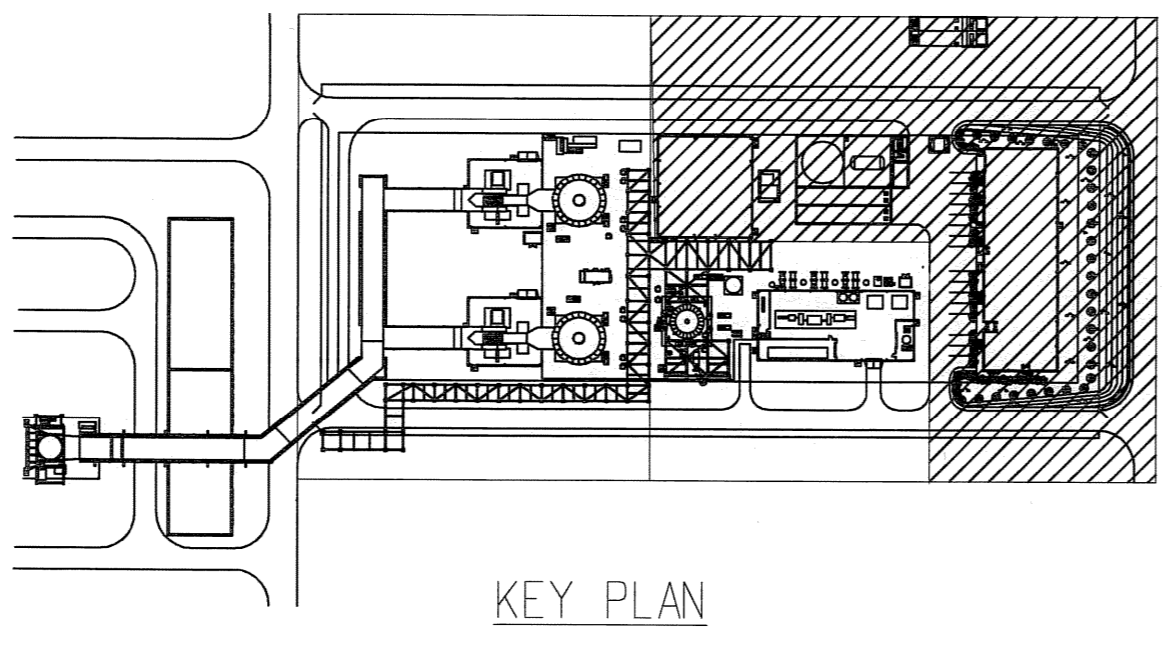


© Bechtel Corporation 2008. All rights reserved. Technical information, including confidential and proprietary information, is contained and may not be used, reproduced, disseminated, or otherwise made available without the prior written permission of Bechtel Corporation. This document is prepared exclusively for Gassnova in connection with the preparation of the FEED study for the CO2 Capture Facility at Karsto, Norway, and is not to be relied upon by others or used in connection with any other project.



ID NO.	EQUIPMENT TAC NO.	ALTERNATE TAC NO.	DESCRIPTION
1	MA-101	K-101	FUEL GAS BLOWER (ABSORBER 1)
2	MA-102	K-102	FUEL GAS BLOWER (ABSORBER 2)
3	MC-101A/B	N/A	INSTRUMENT/SERVICE AIR COMPRESSOR
4	MC-103A/C	K-103A/C	CO2 COMPRESSOR
5	ME-101	E-101	WASH WATER COOLER (ABSORBER 1)
6	ME-102	E-102	LEAN AMINE COOLER
7	ME-103A/B	E-103A/B	SEM-LEAN/RICH HEAT EXCHANGER
8	ME-104	E-104	WASH WATER COOLER (ABSORBER 2)
9	ME-107	E-107	FLASH FEED HEAT EXCHANGER
10	ME-108A/H	E-108A/H	LEAN/RICH AMINE HEAT EXCHANGER
11	ME-109	E-109	FLASH FEED HEATER
12	ME-110A/H	E-110A/H	STRIPPER REBOLLER
13	ME-111A/D	E-111A/D	OVERHEAD STRIPPER CONDENSER
14	ME-112	E-112	CO2 COMPRESSOR 1ST STAGE STEAM GENERATOR
15	ME-113	E-113	CO2 COMPRESSOR 1ST STAGE INTERCOOLER
16	ME-114	E-114	CO2 COMPRESSOR 2ND STAGE STEAM GENERATOR
17	ME-115	E-115	CO2 COMPRESSOR 2ND STAGE INTERCOOLER
18	ME-116	E-116	CO2 COMPRESSOR 3RD STAGE STEAM GENERATOR
19	ME-117	E-117	CO2 COOLER
20	ME-118	N/A	AMINE STORAGE TANK HEATER
21	ME-119	N/A	LEAN AMINE SOLVENT STORAGE TANK HEATER
22	ME-122	N/A	SOFTENED WATER STORAGE TANK HEATER
23	ME-123	N/A	PROCESS WATER SURGE STORAGE TANK HEATER
24	MF-101	F-101	LEAN AMINE SIDE STREAM CARBON FILTER
25	MP-102A/B	F-102A/B	RICH AMINE MECHANICAL FILTER
26	MP-101A/B	P-101A/B	RICH AMINE PUMPS (ABSORBER 1)
27	MP-102A/B	P-102A/B	WASH WATER RECIRCULATION PUMPS (ABSORBER 1)
28	MP-104A/B	P-104A/B	WASH WATER RECIRCULATION PUMPS (ABSORBER 2)
29	MP-105A/B	P-105A/B	LEAN AMINE PUMPS
30	MP-106A/B	P-106A/B	FLASH DRUM PUMPS
31	MP-107A/B	P-107A/B	REFLUX PUMPS
32	MP-108A/B	P-108A/B	CO2 PRODUCT SENDOUT PUMPS
33	MP-109A/B	P-109A/B	FLUE GAS FOGGER WATER SUPPLY PUMPS
34	MP-110A/B	P-110A/B	FRESH AMINE METERING PUMPS
35	MP-111A/B	P-111A/B	LEAN AMINE SOLVENT FILL PUMPS
36	MP-112A/B	P-112A/B	AMINE WASTE SUMP PUMPS
37	MP-113A/B	P-113	WASTEWATER FORWARDING PUMPS
38	MP-114A/B	P-114	LP CONDENSATE RETURN PUMPS
39	MP-115A/B	P-115A/B	SEA WATER COOLING PUMPS
40	MP-116A/B	P-116A/B	CHEMICAL ADDITIVE METERING PUMPS
41	MP-117A/B	P-117A/B	CAUSTIC METERING PUMPS
42	MP-119A/B	N/A	ABSORBER MAKEUP WATER PUMPS
43	MP-121A/B	N/A	SEA WATER COOLING BOOSTER PUMPS
44	MP-122A/B	N/A	SOFTENED WATER SUPPLY PUMPS
45	MP-123A/B	N/A	COMPRESSOR 1ST STAGE CONDENSATE BOOSTER PUMPS
46	MP-124A/B	P-124A/B	RICH AMINE PUMPS (ABSORBER 2)
47	MV-101	T-101	CO2 ABSORBER NO.1
48	MV-102	T-102	CO2 ABSORBER NO.2
49	MV-103	T-103	STRIPPER
50	MV-104	V-104	CO2 COMPRESSOR 1ST INTERSTAGE KNOCKOUT DRUM
51	MV-105	V-105	CO2 COMPRESSOR 2ND INTERSTAGE KNOCKOUT DRUM
52	MV-106	V-106	CO2 SURGE DRUM
53	MV-107	N/A	LP CONDENSATE BLOWDOWN TANK
54	MV-201	V-101	SEMI-LEAN FLASH DRUM
55	MV-202	V-102	STRIPPER REFLUX DRUM
56	MV-203	V-103	CO2 COMPRESSOR SUCTION DRUM
57	MT-101	TK-101	AMINE STORAGE TANK (CONCENTRATED)
58	MT-102	TK-102	LEAN AMINE SOLVENT (35% MEA) STORAGE TANK
59	MT-104	TK-104	PROCESS WATER SURGE TANK
60	MT-107	N/A	SOFTENED WATER STORAGE TANK
61	MT-109	N/A	INSTRUMENT AIR RECEIVER
62	MS-101A/C	X-101A/C	FLUE GAS WATER FOGGER SYSTEM
63	MS-102	X-102	AMINE RECLAIMER
64	MS-103	X-103	RECLAIMER CHEMICAL FEED PACKAGE
65	MS-104	X-104	CO2 DRYING PACKAGE
66	MS-105A/B	N/A	INSTRUMENT AIR DRYER



REVISION PER 10112936-G-TIPB-0-0183 TO INCORPORATE MAIN ELECTRICAL EQUIPMENT DESIGNATIONS		RPT	KLJ	RPT	RPT	BTJ	ALJ				
ISSUED FOR APPROVAL		NO.	DATE	REVISIONS		BY	CHK	DES	ENGR	PRG	APP
<b>GASSNOVA</b> 10112936-PB-G-DRW-0004 Owner Drawing No.			<b>CO2 KARSTO PROJECT</b> MAIN EQUIPMENT LAYOUT CONTROL/WORKSHOP/STORE BUILDING, SWITCHGEAR BUILDING & TANK FARM								
<b>BECHTEL POWER CORPORATION</b> FREDERICK, MARYLAND			Sheet Size 594x841 "A1" Scale: 1:200		JOB NO. 25474		DRAWING NO. P1-0310-00003		REV. 1		

