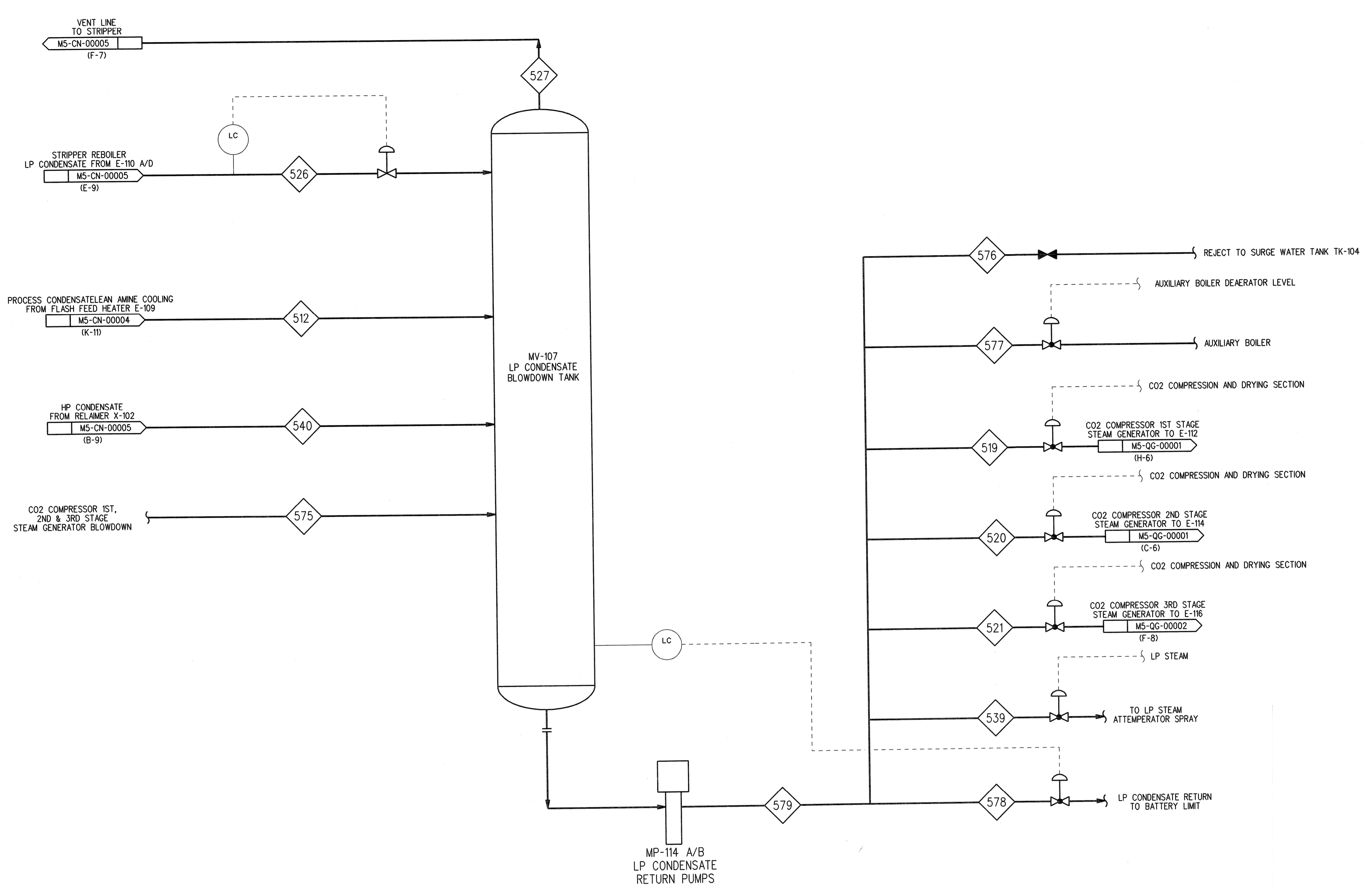


NOTES:  
 1. WHEN RECLAIMER IS OPERATING, THE MAXIMUM CONDENSATE DISCHARGE TO MV-104 IS 12,000 KG/HR (MAXIMUM HP STEAM AVAILABLE FROM CAPP AUXILIARY BOILER).



PROCESS STREAMS		512	519	520	521	526	527	539	540	575	576	577	578	579
PROPERTY	UNITS								(NOTE 1)					
TEMPERATURE	°C	126	99	99	99	134	122	122	0	122	0	122	122	122
PRESSURE	BARG	1.38	8.0	8.0	8.0	2	1.1	8.0	0	1.1	0	8.0	8.0	8.0
MASS DENSITY	KG/M <sup>3</sup>	939	960	960	960	932	1.18	960	0	1.18	0	960	960	960
MASS FLOW	KG/HR	8788	2754	2728	3305	199,581	10,268	22,000	0	100	0	12,000	153,100	195,887

MV-107  
 LP CONDENSATE  
 BLOWDOWN TANK  
 INSIDE DIAMETER = 2200 MM  
 LENGTH T/T = 6000 MM

MP-114 A/B  
 LP CONDENSATE  
 RETURN PUMP  
 DESIGN CAPACITY: 250 M<sup>3</sup>/HR  
 DESIGN Δ P: 7 BAR

Bechtel Confidential

© BECHTEL POWER CORPORATION 2004. ALL RIGHTS RESERVED. BECHTEL CONFIDENTIAL. CONTAINS INFORMATION THAT IS CONFIDENTIAL AND PROPRIETARY TO BECHTEL AND MAY NOT BE REPRODUCED OR DISCLOSED IN ANY FORM OR BY ANY MEANS, WITHOUT PERMISSION IN WRITING FROM BECHTEL POWER CORPORATION. THIS DOCUMENT IS THE PROPERTY OF BECHTEL POWER CORPORATION AND IS NOT TO BE REPRODUCED OR USED IN CONNECTION WITH ANY OTHER PROJECT.

NO.	DATE	REVISIONS	BY	CHK	MRGR	CHK	MRGR	PRG	ENGR

SCALE: DESIGNED: DRAWN: PM

**BECHTEL POWER CORPORATION**  
 FREDERICK, MARYLAND

**CO2 KARSTO PROJECT**

**PROCESS FLOW DIAGRAM**  
**LP CONDENSATE RETURN SYSTEM**

OWNER DOCUMENT NUMBER	JOB NO.	DRAWING NO.	REV
10112936-PB-P-FLD-0014	25474-000	M5-SC-00001	0

GASSNOVA