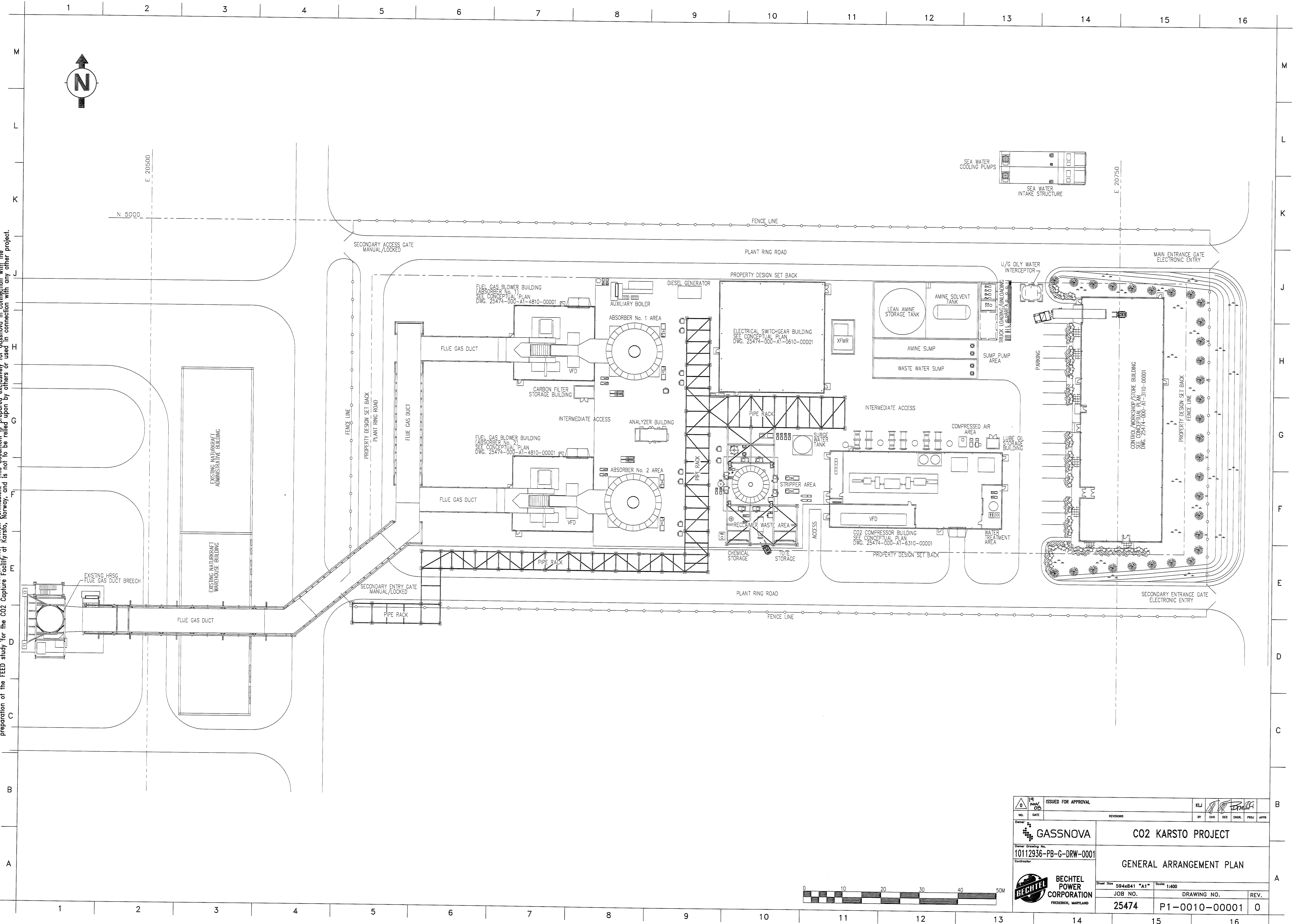
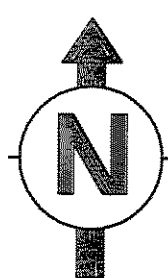


© Bechtel Corporation, 2008. All rights reserved. Bechtel, Confidential, contains information that is confidential and proprietary to Bechtel and may not be used, reproduced, or disclosed in any form without Bechtel's prior written permission. This document is prepared exclusively for Gassnova in connection with the preparation of the FEED study for the CO2 Capture Facility at Karsto, Norway, and is not to be relied upon by others or used in connection with any other project.



ISSUED FOR APPROVAL NO. DATE 19 NOV 08		KLJ BY CHK DES ENGR PROJ APPR	
Owner <b>GASSNOVA</b>		<b>CO2 KARSTO PROJECT</b>	
Owner Drawing No. <b>10112936-PB-G-DRW-0001</b>		<b>GENERAL ARRANGEMENT PLAN</b>	
Contractor <b>BECHTEL POWER CORPORATION</b> FREDERICK, MARYLAND		Sheet Size <b>594x841 "A1"</b>	Scale <b>1:400</b>
JOB NO. <b>25474</b>	DRAWING NO. <b>P1-0010-00001</b>	REV. <b>0</b>	