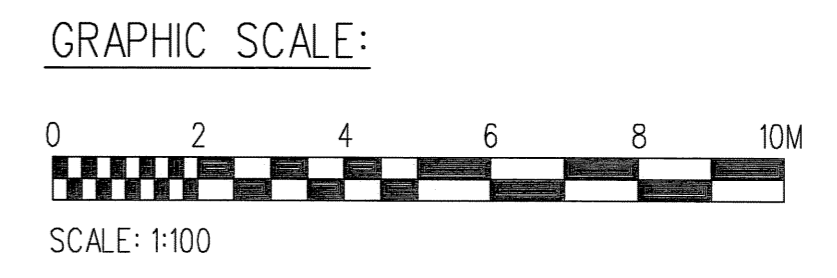


GROUND FLOOR PLAN

NOTES:

- ALL WARNING SYMBOLS SHALL FOLLOW INTERNATIONAL, RECOGNIZED STANDARDS (e.g. ISO 3864, ISO 17938).
- ELEVATIONS AND DIMENSIONS ARE METRIC FORMAT AND ARE IN METERS.
- THIS DRAWING IS PRELIMINARY. ALL ESCAPE ROUTES DEPICTED HEREIN MUST BE CO-ORDINATED WITH THE MAIN GAS PLANT (GASSCO, KARSTO) & VALIDATED DURING DETAILED ENGINEERING.
- ESCAPE DIRECTION SIGNS ON STRUCTURES, EQUIPMENT, TOWERS, TANKS ETC. TO BE LOCATED ON SITE AS REQUIRED.
- PRIMARY ESCAPE ROUTES ARE SHOWN AS THIS: THESE ROUTES SHALL BE AT LEAST 1.0 m WIDE WITH AT LEAST 2.3 m HEAD CLEARANCE. DOORWAYS SHALL BE AT LEAST 0.9 m WIDE WITH AT LEAST 2.15 m HEAD CLEARANCE.
- THIS DRAWING SHALL BE READ WITH DRAWING 10112936-PB-S-HSE-0011/25474-000-U2-0000-00001 (SHEET 1 OF 5) FOR MAIN ESCAPE ROUTES AND PRIMARY ESCAPE DIRECTIONS.
- CANTEN/STAFF/SOCIAL ROOM IS TO BE USED ONLY AS A TEMPORARY MUSTER POINT. ESCAPE ROUTES SHOWN DEPICT PRIMARY EGRESS PATHS TO SITE WIDE MUSTER POINT "M1".
- THIS DRAWING IS BASED ON DRAWING 25474-000-A1-3110-00001, REV. 0.
- THIS DRAWING DEPICTS PRELIMINARY ESCAPE ROUTES ONLY AND IS NOT FOR ANY OTHER PURPOSE.

LEGEND		
SYMBOL	DESCRIPTION	QUANTITY
WARNING SIGNS:		
	CORROSIVE SUBSTANCE	-
	TOXIC GAS	-
	FLAMMABLE SUBSTANCE	-
SAFE CONDITION:		
	ESCAPE ARROW	-
	FIRST AID STATION	-
	PUSH BAR TO OPEN	-
	EMERGENCY EXIT	-



	RE-ISSUED FOR COMMENTS	SBR	DA		RS
	ISSUED FOR COMMENTS	SBR	DA		RS
NO.	DATE	REVISED	BY	CHK	ENR

Owner: **GASSNOVA** CO2 KARSTO PROJECT

Contractor: **BECHTEL POWER CORPORATION** ESCAPE ROUTE DRAWING (PRELIMINARY) SHEET 5 OF 5

Job No. 25474 Drawing No. 000-U2-0000-00005 Rev. 1