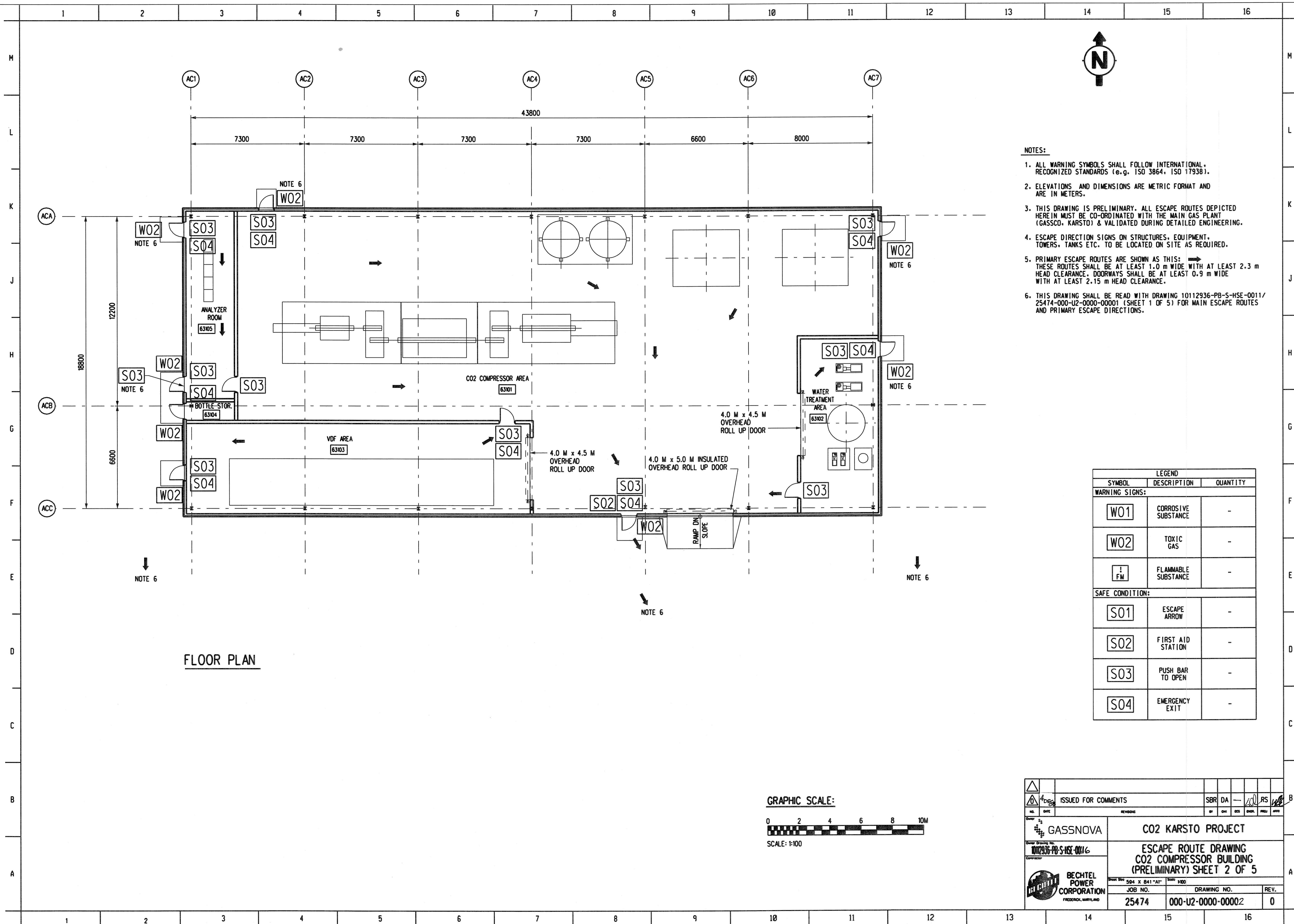


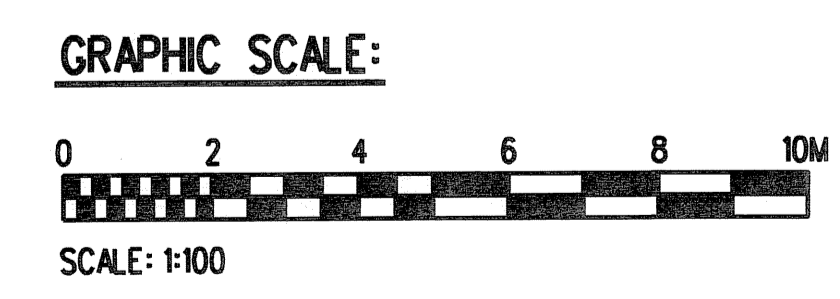
Copyright © 2008, All rights reserved. This drawing is the property of Bechtel Power Corporation. It is to be used only for the project and site for which it was prepared. It is not to be used for any other project. The design is intended to be used in conjunction with the drawings of the main gas plant (GASSCO, KARSTO) & VALIDATED DURING DETAILED ENGINEERING.



- NOTES:**
1. ALL WARNING SYMBOLS SHALL FOLLOW INTERNATIONAL, RECOGNIZED STANDARDS (e.g. ISO 3864, ISO 17938).
 2. ELEVATIONS AND DIMENSIONS ARE METRIC FORMAT AND ARE IN METERS.
 3. THIS DRAWING IS PRELIMINARY. ALL ESCAPE ROUTES DEPICTED HEREIN MUST BE CO-ORDINATED WITH THE MAIN GAS PLANT (GASSCO, KARSTO) & VALIDATED DURING DETAILED ENGINEERING.
 4. ESCAPE DIRECTION SIGNS ON STRUCTURES, EQUIPMENT, TOWERS, TANKS ETC. TO BE LOCATED ON SITE AS REQUIRED.
 5. PRIMARY ESCAPE ROUTES ARE SHOWN AS THIS: THESE ROUTES SHALL BE AT LEAST 1.0 m WIDE WITH AT LEAST 2.3 m HEAD CLEARANCE. DOORWAYS SHALL BE AT LEAST 0.9 m WIDE WITH AT LEAST 2.15 m HEAD CLEARANCE.
 6. THIS DRAWING SHALL BE READ WITH DRAWING 10112936-PB-S-HSE-0011/25474-000-U2-0000-00001 (SHEET 1 OF 5) FOR MAIN ESCAPE ROUTES AND PRIMARY ESCAPE DIRECTIONS.

LEGEND		
SYMBOL	DESCRIPTION	QUANTITY
WARNING SIGNS:		
	CORROSIVE SUBSTANCE	-
	TOXIC GAS	-
	FLAMMABLE SUBSTANCE	-
SAFE CONDITION:		
	ESCAPE ARROW	-
	FIRST AID STATION	-
	PUSH BAR TO OPEN	-
	EMERGENCY EXIT	-

FLOOR PLAN



ISSUED FOR COMMENTS		SBR	DA	RS
GASSNOVA		CO2 KARSTO PROJECT		
10112936-PB-S-HSE-0016		ESCAPE ROUTE DRAWING CO2 COMPRESSOR BUILDING (PRELIMINARY) SHEET 2 OF 5		
BECHTEL POWER CORPORATION		JOB NO.	DRAWING NO.	REV.
FREDERICK, MARYLAND		25474	000-U2-0000-00002	0