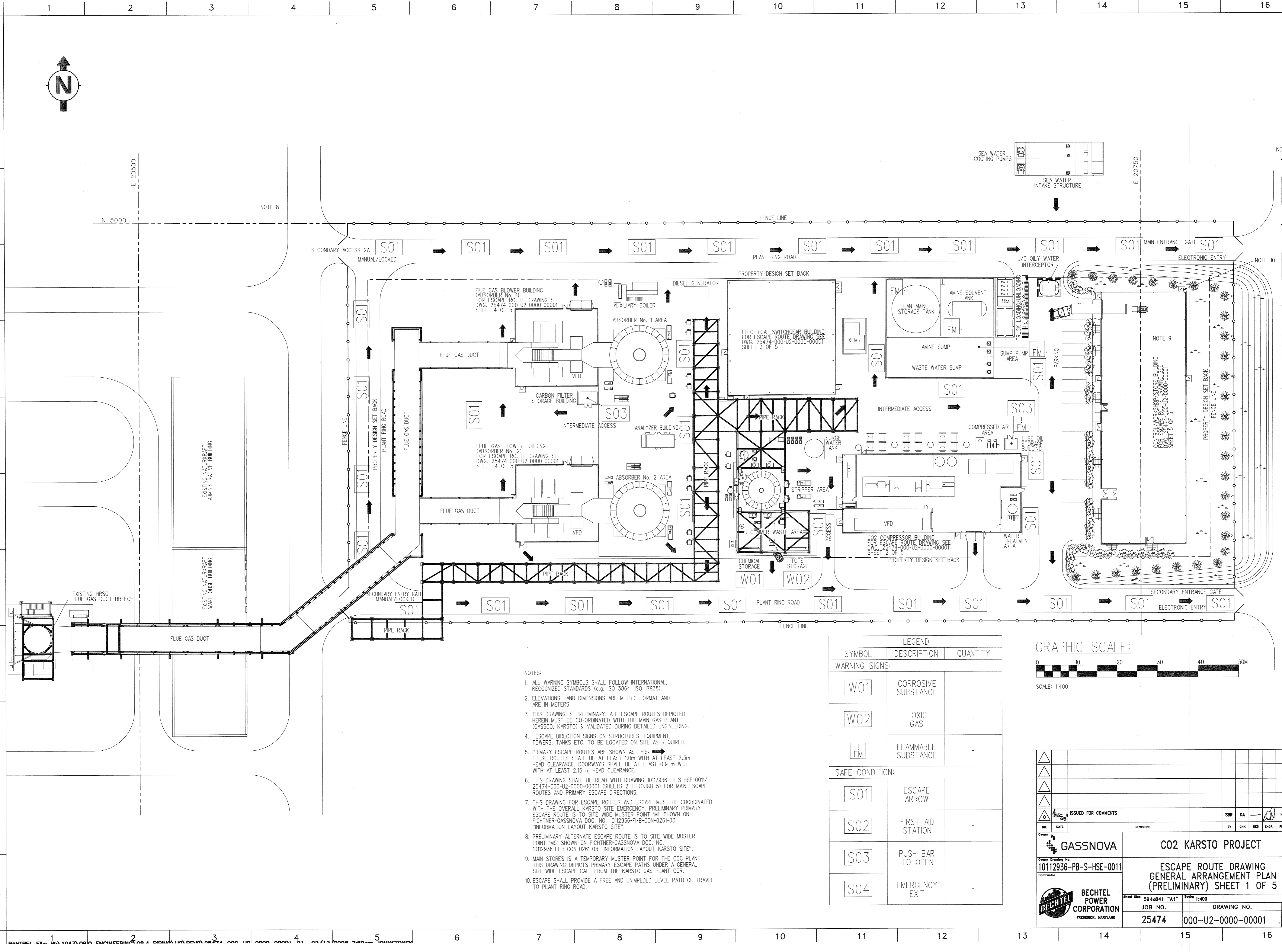
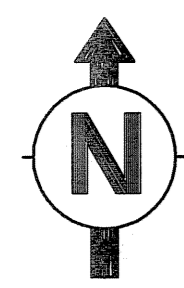
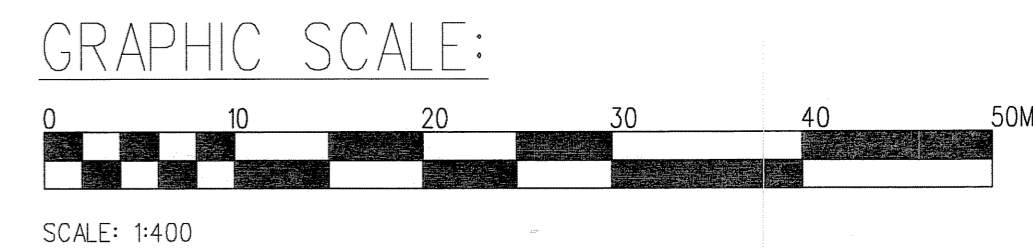


© Bechtel Corporation 2008. All rights reserved. Bechtel Confidential. Contains information that is confidential and proprietary to Bechtel and may not be used, reproduced, or discussed in any form without Bechtel's prior written permission. This document is prepared for the use of the client and is not to be relied upon by others or used in connection with any other project.



- NOTES:
1. ALL WARNING SYMBOLS SHALL FOLLOW INTERNATIONAL, RECOGNIZED STANDARDS (e.g. ISO 3864, ISO 17938).
 2. ELEVATIONS AND DIMENSIONS ARE METRIC FORMAT AND ARE IN METERS.
 3. THIS DRAWING IS PRELIMINARY. ALL ESCAPE ROUTES DEPICTED HEREIN MUST BE CO-ORDINATED WITH THE MAIN GAS PLANT (GASSCO, KARSTO) & VALIDATED DURING DETAILED ENGINEERING.
 4. ESCAPE DIRECTION SIGNS ON STRUCTURES, EQUIPMENT, TOWERS, TANKS ETC. TO BE LOCATED ON SITE AS REQUIRED.
 5. PRIMARY ESCAPE ROUTES ARE SHOWN AS THIS: THESE ROUTES SHALL BE AT LEAST 1.0m WITH AT LEAST 2.3m HEAD CLEARANCE. DOORWAYS SHALL BE AT LEAST 0.9 m WIDE WITH AT LEAST 2.15 m HEAD CLEARANCE.
 6. THIS DRAWING SHALL BE READ WITH DRAWING 10112936-PB-S-HSE-0011/25474-000-U2-0000-00001 (SHEETS 2 THROUGH 5) FOR MAIN ESCAPE ROUTES AND PRIMARY ESCAPE DIRECTIONS.
 7. THIS DRAWING FOR ESCAPE ROUTES AND ESCAPE MUST BE COORDINATED WITH THE OVERALL KARSTO SITE EMERGENCY. PRELIMINARY PRIMARY ESCAPE ROUTE IS TO SITE WIDE MUSTER POINT 'M' SHOWN ON FICHTNER-GASSNOVA DOC. NO. 10112936-FI-B-CON-0261-03 "INFORMATION LAYOUT KARSTO SITE".
 8. PRELIMINARY ALTERNATE ESCAPE ROUTE IS TO SITE WIDE MUSTER POINT 'M5' SHOWN ON FICHTNER-GASSNOVA DOC. NO. 10112936-FI-B-CON-0261-03 "INFORMATION LAYOUT KARSTO SITE".
 9. MAIN STORES IS A TEMPORARY MUSTER POINT FOR THE CCC PLANT. THIS DRAWING DEPICTS PRIMARY ESCAPE PATHS UNDER A GENERAL SITE-WIDE ESCAPE CALL FROM THE KARSTO GAS PLANT COR.
 10. ESCAPE SHALL PROVIDE A FREE AND UNIMPEDED LEVEL PATH OF TRAVEL TO PLANT RING ROAD.

LEGEND		
SYMBOL	DESCRIPTION	QUANTITY
WARNING SIGNS:		
	CORROSIVE SUBSTANCE	-
	TOXIC GAS	-
	FLAMMABLE SUBSTANCE	-
SAFE CONDITION:		
	ESCAPE ARROW	-
	FIRST AID STATION	-
	PUSH BAR TO OPEN	-
	EMERGENCY EXIT	-



ISSUED FOR COMMENTS		SBR	DA	RS	APR
NO.	DATE	BY	CHK	DES	ENGR.
Owner: GASSNOVA		PROJECT: CO2 KARSTO PROJECT			
Owner Drawing No. 10112936-PB-S-HSE-0011		CONTRACTOR: BECHTEL POWER CORPORATION			
SHEET: 1 OF 5		DRAWING NO. 25474-000-U2-0000-00001			
JOB NO. 25474		REV. 0			