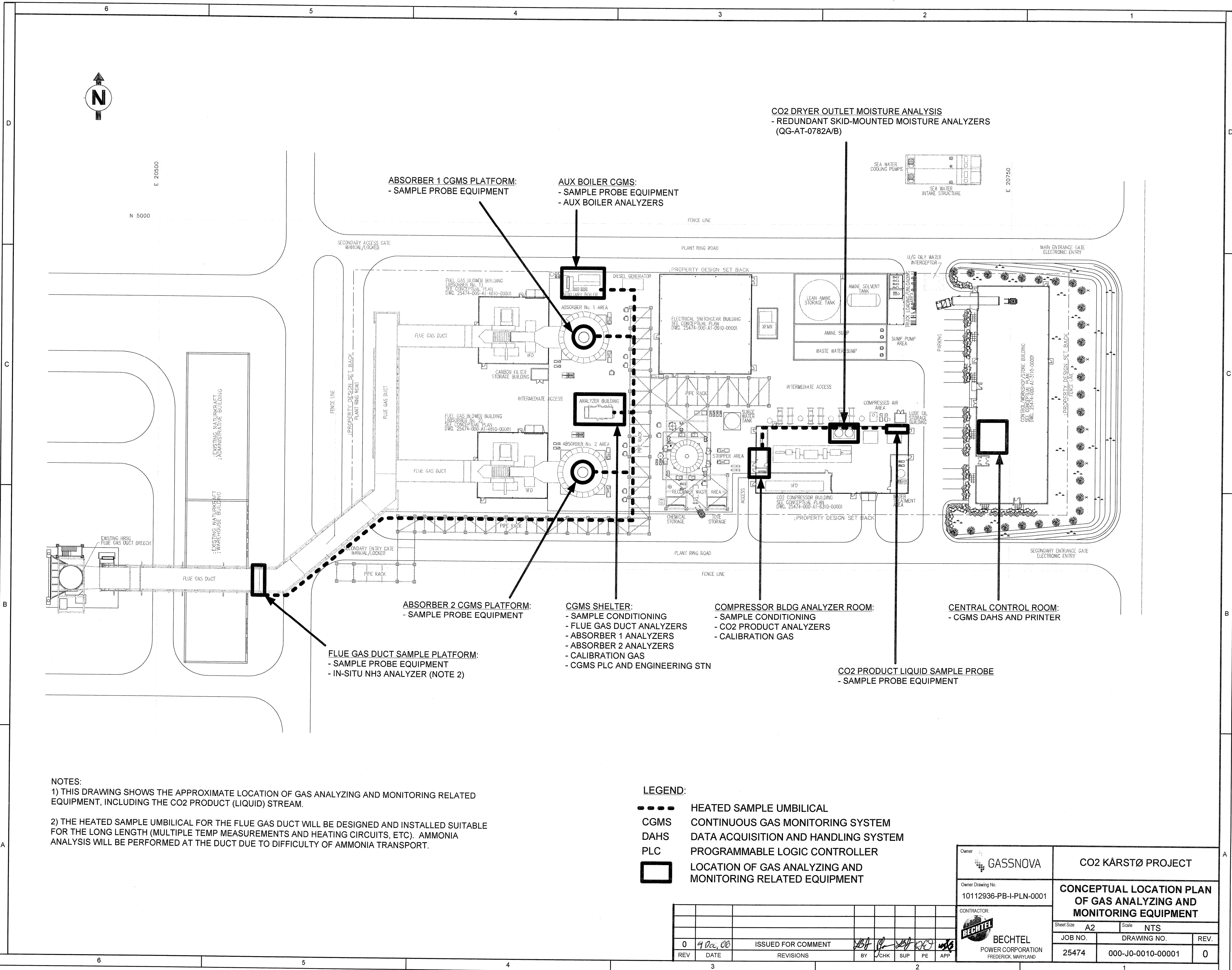


© Bechtel Corporation 2008. All rights reserved. Bechtel Confidential. Contains information that is confidential and proprietary to Bechtel and may not be used, reproduced, or disclosed in any format without Bechtel's prior written permission. This document is prepared exclusively for Gassnova in connection with the preparation of the FEED study for the CO2 Capture Facility at Kårstø, Norway, and is not to be relied upon by others or used in connection with any other project.



NOTES:
 1) THIS DRAWING SHOWS THE APPROXIMATE LOCATION OF GAS ANALYZING AND MONITORING RELATED EQUIPMENT, INCLUDING THE CO2 PRODUCT (LIQUID) STREAM.
 2) THE HEATED SAMPLE UMBILICAL FOR THE FLUE GAS DUCT WILL BE DESIGNED AND INSTALLED SUITABLE FOR THE LONG LENGTH (MULTIPLE TEMP MEASUREMENTS AND HEATING CIRCUITS, ETC). AMMONIA ANALYSIS WILL BE PERFORMED AT THE DUCT DUE TO DIFFICULTY OF AMMONIA TRANSPORT.

LEGEND:
 - - - - HEATED SAMPLE UMBILICAL
 CGMS CONTINUOUS GAS MONITORING SYSTEM
 DAHS DATA ACQUISITION AND HANDLING SYSTEM
 PLC PROGRAMMABLE LOGIC CONTROLLER
 □ LOCATION OF GAS ANALYZING AND MONITORING RELATED EQUIPMENT

REV	DATE	REVISIONS	BY	CHK	SUP	PE	APP
0	4 Dec 08	ISSUED FOR COMMENT					

Owner GASSNOVA	CO2 KÅRSTØ PROJECT		
Owner Drawing No. 10112936-PB-I-PLN-0001	CONCEPTUAL LOCATION PLAN OF GAS ANALYZING AND MONITORING EQUIPMENT		
CONTRACTOR BECHTEL POWER CORPORATION FREDERICK, MARYLAND	Sheet Size A2	Scale NTS	REV.
	JOB NO. 25474	DRAWING NO. 000-J0-0010-00001	0