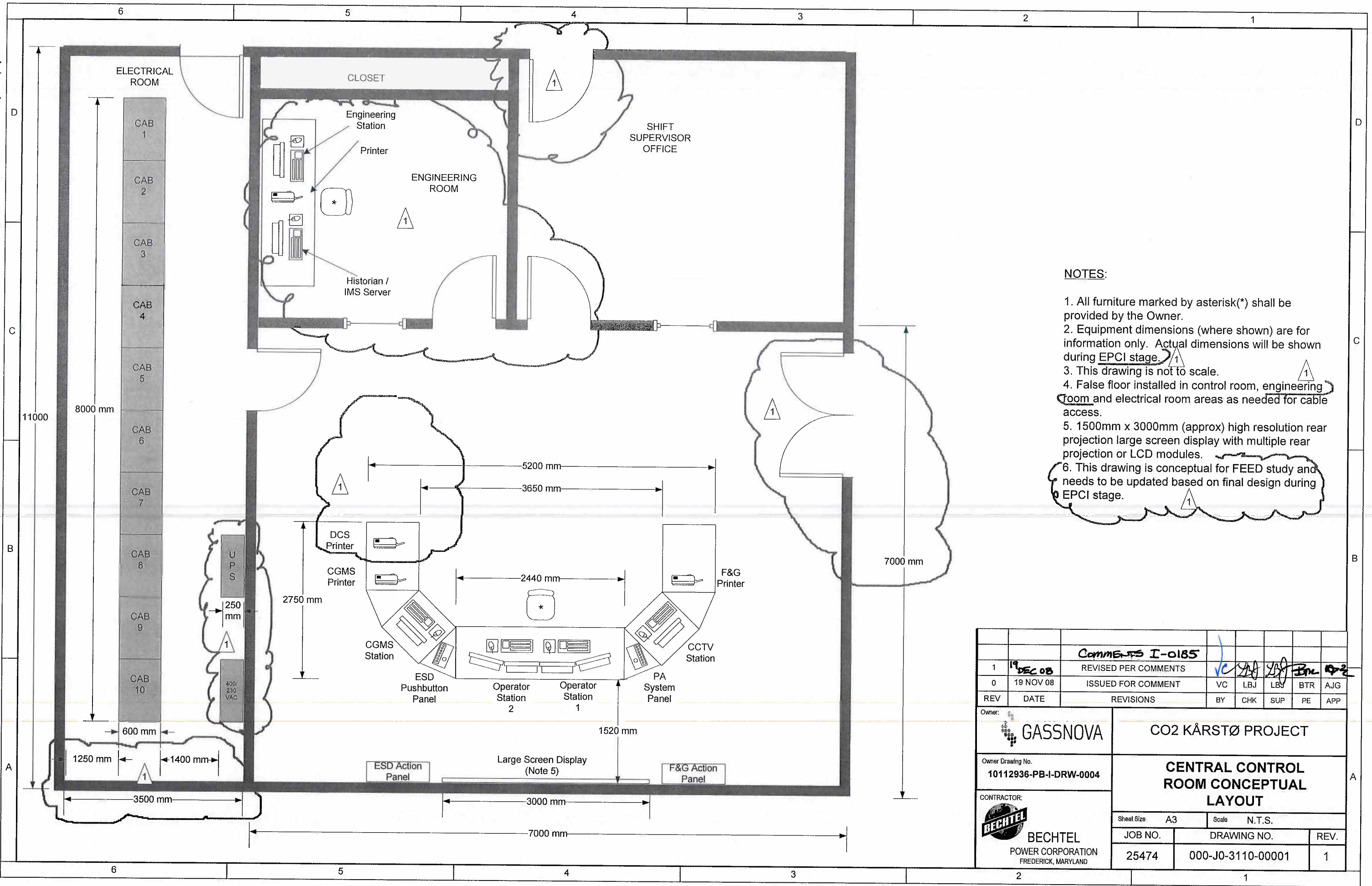


© Bechtel Corporation 2008. All rights reserved. Bechtel Confidential. Contains information that is confidential and proprietary to Bechtel and may not be used, reproduced, or disclosed in any format without Bechtel's prior written permission. This document is prepared exclusively for Gassnova in connection with the preparation of the FEED study for the CO2 Capture Facility at Kårstø, Norway, and is not to be relied upon by others or used in connection with any other project.



- NOTES:**
1. All furniture marked by asterisk(\*) shall be provided by the Owner.
  2. Equipment dimensions (where shown) are for information only. Actual dimensions will be shown during EPCI stage.
  3. This drawing is not to scale.
  4. False floor installed in control room, engineering room and electrical room areas as needed for cable access.
  5. 1500mm x 3000mm (approx) high resolution rear projection large screen display with multiple rear projection or LCD modules.
  6. This drawing is conceptual for FEED study and needs to be updated based on final design during EPCI stage.

REV	DATE	REVISIONS	BY	CHK	SUP	PE	APP
1	19 DEC 08	REVISED PER COMMENTS	VC	LBJ	LBY	BTR	AJG
0	19 NOV 08	ISSUED FOR COMMENT					

Owner:	<b>GASSNOVA</b>	<b>CO2 KÅRSTØ PROJECT</b>			
Owner Drawing No.	10112936-PB-I-DRW-0004	<b>CENTRAL CONTROL ROOM CONCEPTUAL LAYOUT</b>			
CONTRACTOR:	<b>BECHTEL</b> POWER CORPORATION FREDERICK, MARYLAND	Sheet Size	A3	Scale	N.T.S.
		JOB NO.	25474	DRAWING NO.	000-J0-3110-00001
		REV.			1