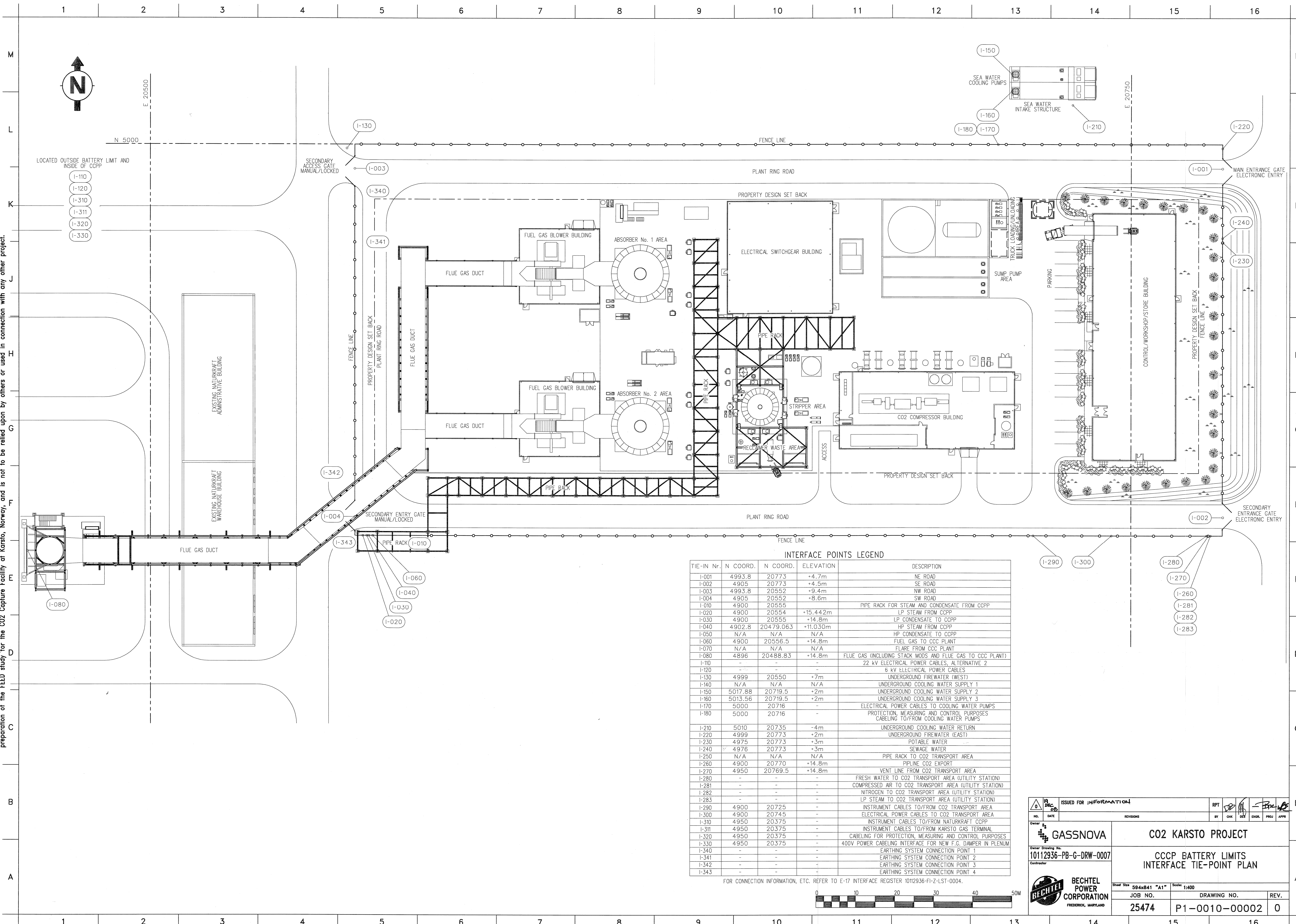


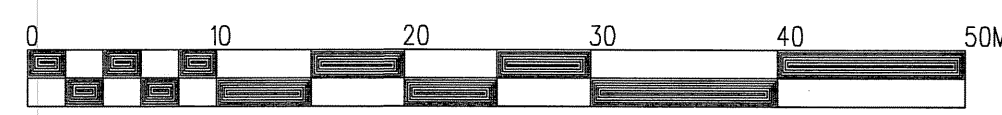
Contains information that is confidential and proprietary to Bechtel and may not be used, reproduced, or disseminated in any form without Bechtel's prior written permission. This document is prepared exclusively for Gassnova in connection with the preparation of the FGD study for the CO2 Capture Facility at Karsto, Norway, and is not to be relied upon by others or used in connection with any other project.



**INTERFACE POINTS LEGEND**

TIE-IN Nr.	N COORD.	N COORD.	ELEVATION	DESCRIPTION
I-001	4993.8	20773	+4.7m	NE ROAD
I-002	4905	20773	+4.5m	SE ROAD
I-003	4993.8	20552	+9.4m	NW ROAD
I-004	4905	20552	+8.6m	SW ROAD
I-010	4900	20555	-	PIPE RACK FOR STEAM AND CONDENSATE FROM CCPP
I-020	4900	20554	+15.442m	LP STEAM FROM CCPP
I-030	4900	20555	+14.8m	LP CONDENSATE TO CCPP
I-040	4902.8	20479.063	+11.030m	HP STEAM FROM CCPP
I-050	N/A	N/A	N/A	HP CONDENSATE TO CCPP
I-060	4900	20556.5	+14.8m	FUEL GAS TO CCC PLANT
I-070	N/A	N/A	N/A	FLARE FROM CCC PLANT
I-080	4896	20488.83	+14.8m	FLUE GAS (INCLUDING STACK MODS AND FLUE GAS TO CCC PLANT)
I-110	-	-	-	22 kV ELECTRICAL POWER CABLES, ALTERNATIVE 2
I-120	-	-	-	6 kV ELECTRICAL POWER CABLES
I-130	4999	20550	+7m	UNDERGROUND FIREWATER (WEST)
I-140	N/A	N/A	N/A	UNDERGROUND COOLING WATER SUPPLY 1
I-150	5017.88	20719.5	+2m	UNDERGROUND COOLING WATER SUPPLY 2
I-160	5013.56	20719.5	+2m	UNDERGROUND COOLING WATER SUPPLY 3
I-170	5000	20716	-	ELECTRICAL POWER CABLES TO COOLING WATER PUMPS
I-180	5000	20716	-	PROTECTION, MEASURING AND CONTROL PURPOSES CABELING TO/FROM COOLING WATER PUMPS
I-210	5010	20735	-4m	UNDERGROUND COOLING WATER RETURN
I-220	4999	20773	+2m	UNDERGROUND FIREWATER (EAST)
I-230	4975	20773	+3m	POTABLE WATER
I-240	4976	20773	+3m	SEWAGE WATER
I-250	N/A	N/A	N/A	PIPE RACK TO CO2 TRANSPORT AREA
I-260	4900	20770	+14.8m	PIPELINE CO2 EXPORT
I-270	4950	20769.5	+14.8m	VENT LINE FROM CO2 TRANSPORT AREA
I-280	-	-	-	FRESH WATER TO CO2 TRANSPORT AREA (UTILITY STATION)
I-281	-	-	-	COMPRESSED AIR TO CO2 TRANSPORT AREA (UTILITY STATION)
I-282	-	-	-	NITROGEN TO CO2 TRANSPORT AREA (UTILITY STATION)
I-283	-	-	-	LP STEAM TO CO2 TRANSPORT AREA (UTILITY STATION)
I-290	4900	20725	-	INSTRUMENT CABLES TO/FROM CO2 TRANSPORT AREA
I-300	4900	20745	-	ELECTRICAL POWER CABLES TO CO2 TRANSPORT AREA
I-310	4950	20375	-	INSTRUMENT CABLES TO/FROM NATURKRAFT CCPP
I-311	4950	20375	-	INSTRUMENT CABLES TO/FROM KARSTO GAS TERMINAL
I-320	4950	20375	-	CABELING FOR PROTECTION, MEASURING AND CONTROL PURPOSES
I-330	4950	20375	-	400V POWER CABELING INTERFACE FOR NEW F.G. DAMPER IN PLENUM
I-340	-	-	-	EARTHING SYSTEM CONNECTION POINT 1
I-341	-	-	-	EARTHING SYSTEM CONNECTION POINT 2
I-342	-	-	-	EARTHING SYSTEM CONNECTION POINT 3
I-343	-	-	-	EARTHING SYSTEM CONNECTION POINT 4

FOR CONNECTION INFORMATION, ETC. REFER TO E-17 INTERFACE REGISTER 10112936-FI-Z-LST-0004.



ISSUED FOR INFORMATION		RPT	BY	CHK	DEL	ENGR.	PRG.	APPR
NO.	DATE	REVISIONS						
		<b>CO2 KARSTO PROJECT</b>						
Owner Drawing No. <b>10112936-PB-G-DRW-0007</b>		CCCP BATTERY LIMITS INTERFACE TIE-POINT PLAN						
		Sheet Size 594x841 "A1"	Scale 1:400	JOB NO. <b>25474</b>		DRAWING NO. <b>P1-0010-00002</b>		REV. <b>0</b>